



2018 Wood Lathe

Owner's Manual



Oliver Machinery

Seattle, WA
info@olivermachinery.net

M-2018.002 03/2019

© Copyright 2003-2019
www.olivermachinery.net

[illegible][illegible]

Warranty

Oliver makes every effort possible to assure that its equipment meets the highest possible standards of quality and durability. All products sold by Oliver are warranted to the original customer to be free from defects for a period of 2 (two) years on all parts, excluding electronics and motors, which are warranted for 1 year. Oliver's obligation under this warranty shall be exclusively limited to repairing or replacing (at Oliver's option) products which are determined by Oliver to be defective upon delivery F.O.B. (return freight paid by customer) to Oliver, and on inspection by Oliver. This warranty does not apply to defects due, directly or indirectly, to misuse, abuse, negligence, accidents, unauthorized repairs, alterations, lack of maintenance, acts of nature, or items that would normally be consumed or require replacement due to normal wear. In no event shall Oliver be liable for death, personal or property injury, or damages arising from the use of its products.

Warning

Read this manual thoroughly before operating the machine. Oliver Machinery disclaims any liability for machines that have been altered or abused. Oliver Machinery reserves the right to effect at any time, without prior notice, those alterations to parts, fittings, and accessory equipment which they may deem necessary for any reason whatsoever.

For More Information

Oliver Machinery is always adding new Industrial Woodworking products to the line. For complete, up-to-date product information, check with your local Oliver Machinery distributor, or visit www.olivermachinery.net

WARNING

Read this manual completely and observe all warning labels on the machine. Oliver Machinery has made every attempt to provide a safe, reliable, easy-to-use piece of machinery. Safety, however, is ultimately the responsibility of the individual machine operator. As with any piece of machinery, the operator must exercise caution, patience, and common sense to safely run the machine. Before operating this product, become familiar with the safety rules in the following sections.

- **Always keep guards and covers in place and in proper operating condition.**
1. If you are not properly trained in the use of a lathe do not use until the proper training has been obtained.
 2. Read, understand and follow the safety instructions found in this manual. Know the limitations and hazards associated with this machine.
 3. Make certain that the machine frame is electrically grounded and that a ground lead is included in the incoming electrical service. In cases where a cord and plug are used, make certain that the grounding plug connects to a suitable ground. Follow the grounding procedure indicated in the National Electrical Code.
 4. Wear an approved safety shield, goggles, or glasses to protect eyes. Common eyeglasses are only impact-resistant, they are not safety glasses.
 5. Before operating the machine, remove tie, rings, watch and other jewelry and roll up sleeves above the elbows. Remove all loose outer clothing and confine long hair. Protective type footwear should be used. Where the noise exceeds the level of exposure allowed in Section 1910.95 of the OSHA Regulations, use hearing protective devices. Do not wear gloves.
 6. Keep the machine guards and covers in place for every operation. If any guards and covers are removed for maintenance, DO NOT OPERATE the machine until the guards and covers are reinstalled.
 7. Keep the floor around the machine clean and free of scrap material, saw dust, oil and other liquids to minimize the danger of tripping or slipping. Be sure the bed is free of all scrap, foreign material and tools before starting the lathe. Make certain the work area is well lighted and that a proper exhaust system is used to minimize dust. Use anti-skid floor strips on the floor area where the operator normally stands and mark off machine work area. Provide adequate work space around the machine.
 8. Maintain a balanced stance and keep your body under control at all times.
 9. Before turning on machine, remove all extra equipment such as keys, wrenches, scraps, and cleaning rags away from the machine.
 10. Give the work you are doing your undivided attention. Looking around, carrying on a conversation, and “horseplay” are careless acts that can result in serious injury.
 11. Before performing any service, maintenance, adjustments or when changing faceplates or chucks disconnect the machine from power source. A machine under repair should be RED TAGGED to show it should not be used until the maintenance is complete.

12. Do not turn stock with loose knots, nails or any foreign material in the work piece.
13. If the operator leaves the machine area for any reason, the lathe should be turned "off" and the head should come to a complete stop before their departure. In addition, if the operation is complete, both the lathe and work area should be cleaned. NEVER clean the lathe with power "on" and never use hands to clear sawdust and debris; use a brush or air hose.
14. Use only genuine Oliver Machinery factory authorized replacement parts and accessories; otherwise the warranty and guarantee is null and void.
15. Do not use this Oliver lathe for other than its intended use. If used for other purposes, Oliver disclaims any real or implied warranty and holds itself harmless for any injury or damage which may result from that use.
16. Do not operate this machine while under the influence of drugs, alcohol, or any medication.
17. This machine is designed for turning wood products only. Do not use to turn any kind of substance other than wood.
18. Never start the lathe while the work piece is in contact with the chisel.
19. Some dust created by power sanding, sawing, grinding, drilling and other construction activities contains chemicals known to cause cancer, birth defects or other reproductive harm. Some examples of these chemicals are:
 - Lead from lead-based paint.
 - Crystalline silica from bricks and cement and other masonry products.
 - Arsenic and chromium from chemically-treated lumber.Your risk from these exposures varies, depending on how often you do this type of work. To reduce your exposure to these chemicals, work in a well-ventilated area, and work with approved safety equipment, such as those dust masks that are specifically designed to filter out microscopic particles.

Familiarize yourself with the following safety notices used in this manual:

CAUTION: (This means that if precautions are not heeded, it may result in minor or moderate injury and/or possible machine damage)

WARNING: (This means that if precautions are not heeded, it could result in serious injury or possibly even death).

Table of Contents	Page Number
Warranty	2
Warnings	3-4
Table of Contents	5
Specifications	5
Contents	6
Uncrating the Machine	6
Machine Preparation and Setup	6
Electrical Connections.....	7
Assembly.....	7-8
Adjustments	9
Centers, Install/Remove.....	10
Face Plates, Install/Remove	10-11
Hi/Lo Range Belt Change	11-12
Controls	13
Indexing.....	14
Using the Indexer	15
Recommended Lathe Speeds	16
Maintenance.....	16
Troubleshooting	17

Specifications

Stock No.....	2018
Swing Over Bed, Inboard (in.).....	18
Swing Over Bed, Outboard (in.).....	35
Variable Speed Range 1 (RPM)	50-1200
Variable Speed Range 2 (RPM)	150-3200
Spindle	1-1/4", 8TPI, RH thread
Headstock Spindle Taper.....	#2 Morris
Tailstock Spindle Taper.....	#2 Morris
Inboard Face Plate Diameter (in.).....	6
Outboard Face Plate Diameter (in.)	6
Distance From Floor to Spindle Centerline (in.).....	43-1/2
Maximum Distance Between Centers (in.).....	42
Maximum Distance Between Centers with bed extension (in.)	57
Tailstock Quill Travel (in.).....	4-1/4
Footprint of Stand (in.)	69 x 19
Motor	2HP, 1Ph, 12 amp, 230V Only
Gross Weight (lbs.)	950

Oliver 2018 – 18” Lathe

Contents

Figure 1

1. Comparator Centers (two)
2. Tool Rests
3. Levelling Pads and Bolts
4. Knockout Rod
5. Motor Tension Rod
6. Comparator/Guard Support Bracket
7. Comparator/Guard Brackets

Figure 2

1. Outboard Tool Rest Holder (Optional)
2. Bed Extension (Optional)
3. Guard

Pictures and illustrations may vary from actual product.

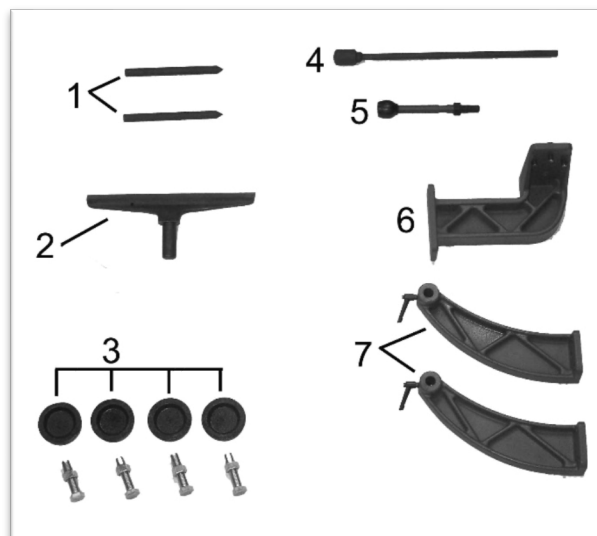


Figure 1

Uncrating the Machine

Retain all packaging materials in case it becomes necessary to ship the machine to another site.

Machine Preparation and Setup

WARNING!

The equipment used to lift this machine must have a rated capacity at, or above the weight of the lathe. Failure to comply may cause serious injury!

The lathe can be lifted off the skid from over head using slings ran under the lathe bed.

The lathe must be positioned on a smooth, level surface. Install the leveling bolts and pads (3, Figure 1) under the four corners of the lathe.

Clean all rust protected surfaces with a commercial solvent. Do not use acetone, gasoline, lacquer thinner or any type of flammable solvent, or a cleaner that may damage paint. Cover cleaned surfaces with WD-40 or a 20W machine oil.

Insert the leveling bolts as shown in Figure 4. Place a level on the bed of the lathe and adjust leveling bolts until the machine is resting level on the pads. Tighten the hex nuts against the base of the lathe to keep the leveling bolts from turning.

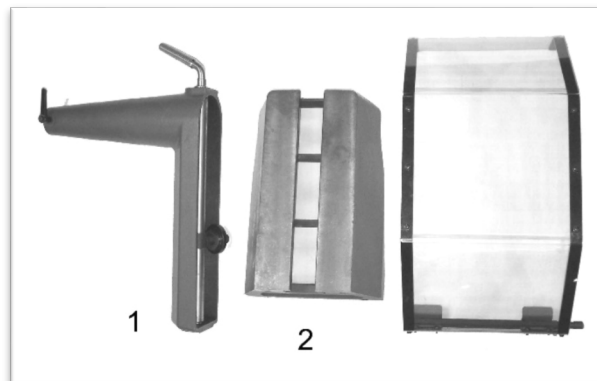


Figure 2

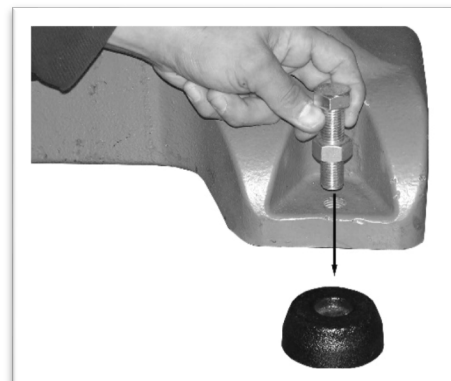


Figure 4

Electrical Connections

Grounding Instructions

Electrical connections must be made by a qualified electrician in compliance with all relevant codes. This machine must be properly grounded to help prevent electrical shock and possible fatal injury.

This machine must be grounded. In the event of a malfunction or breakdown, grounding provides a path of least resistance for electric current to reduce the risk of electric shock. Improper connection of the equipment grounding conductor can result in a risk of electric shock. The conductor, with insulation having an outer surface that is green with or without yellow stripes, is the equipment grounding conductor. If repair or replacement of the electric cord or plug is necessary, do not connect the equipment grounding conductor to a live terminal.

The Oliver lathe is supplied with an electrical pigtail cord. A 230-volt three prong plug capable of handling 12 amps must be purchased and installed on the cord. The black and white wires will attach to the line in terminals on the plug and the green ground wire will attach to the ground terminal on the plug.

Assembly

1. The bed extension (optional) can be used to facilitate outboard turning or it can be used to extend the main bed. Installation for either application is as shown in Figure 5. The mounting bolts are stored from the factory in their correct mounting holes on the side of the machine. Use an 8mm Allen wrench to remove them and re-install with the extension in place.



Figure 5

2. Install the outboard tool rest holder (optional) onto its bed by sliding it into the end of the bed as shown in Figure 6. Line up the pressure disc B with the T-slot of the

bed. It may be necessary to push or pull locking lever A to adjust the pressure disc to the correct height. Once on, push lever A to lock the holder into place. If the holder will not lock into place it may be necessary to adjust the lock nut (C).

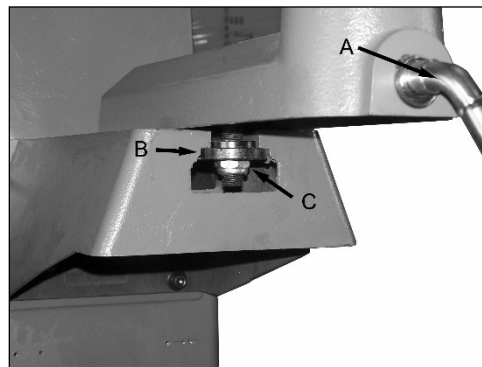


Figure 6

3. Insert the tool rest into its holder as shown in Figure 7 and when the desired position is found, lock into place with handle A.

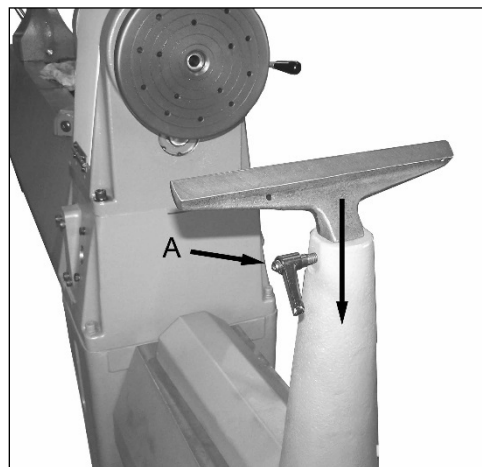


Figure 7

4. Mount the comparator/guard support bracket to the back of the machine as shown in Figure 8. Use the supplied 6mm Allen head bolts to securely mount the bracket to the machine.

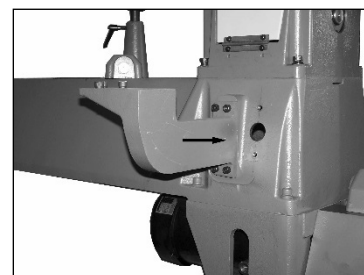


Figure 8

Assembly (cont.)

5. Mount the headstock side comparator/guard bracket on top of the support as shown in Figure 10. Use the supplied 6mm Allen head bolts.

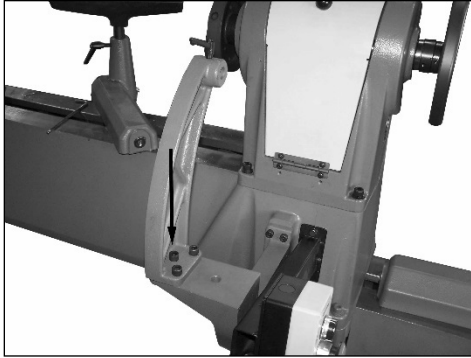


Figure 10

6. Mount the second comparator bracket to the tailstock as shown in Figure 11 using the supplied 6mm Allen head bolts. As well, the comparator pin A has been installed. Notice the flat part of the pin faces the bolt of the lock handle.

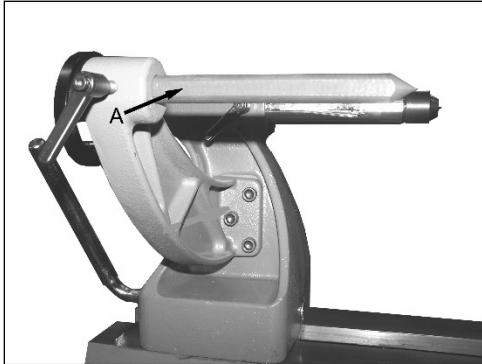


Figure 11

7. Your Oliver lathe is equipped with a safety shield. Install the mounting post of the shield, in the direction shown by the arrow in Figure 12, into the comparator/guard bracket and lock into place with the lock handle. Loosen the lock handle to adjust the guard position as necessary and then re-tighten.

If desired, the safety shield can be removed in order to install the second comparator pin.

CAUTION!

Eye protection must always be worn whether the safety shield is installed or not!

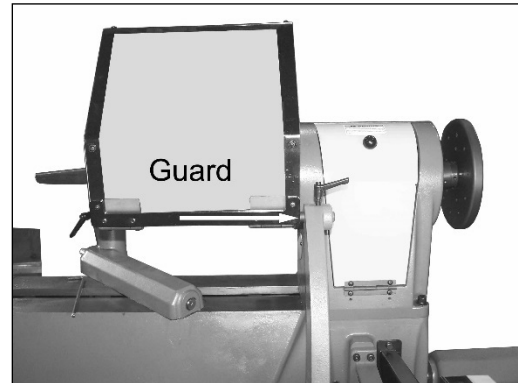


Figure 12

8. Install the motor tension rod as shown in Figure 13. Once threaded in, lock into place with the jam nut A.



Figure 13

9. The inboard tool rest can now be installed in its holder as shown in Figure 14. Once set in place lock it using the handle A.



Figure 14

Adjustments

Tailstock

Depending on the length of your work piece, the tailstock can be moved accordingly. Simply push or pull handle A of Figure 15 to loosen and allow the tailstock to slide to the correct position. Once in position lock it into place with handle A. Fine adjustment can be achieved by turning the handwheel to lengthen or shorten the tailstock spindle.

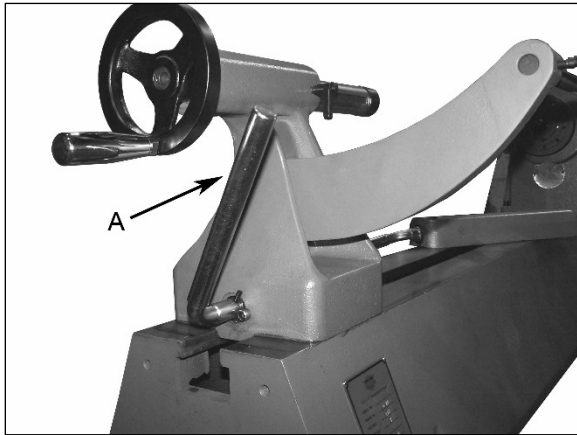


Figure 15

Cam Adjustments

If the tool rests or tailstock do not tighten to the bed lathe when the locking handle is engaged, it may be necessary to tighten the locknut as seen in Figure 16. The adjustment is the same for all three.

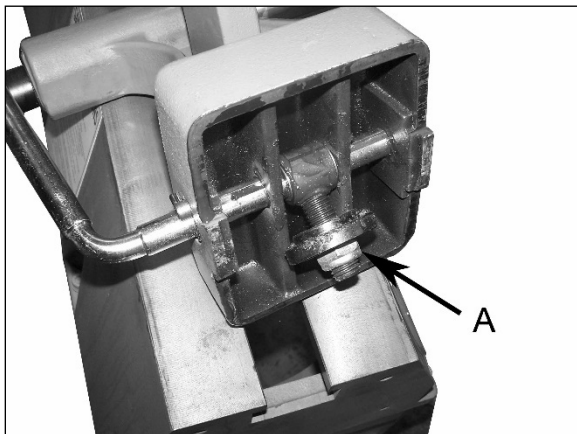


Figure 16

Tool Supports

Your Oliver lathe comes with an inboard and if ordered with optional bed extension and outboard tool rest as seen in Figure 17. Each tool rest can be adjusted for height, position on the bed, and angle to the work piece.

Loosen the lock handle A to slide the rest forward or back as well as to angle it with respect to the bed. Once set to the desired position use handle A again to lock it into place before using the lathe.

Loose handle B to adjust the height and angle of the tool rest itself. Once set, lock it into place before using the lathe. Note that the small handle B is a ratchet type handle and can be positioned so that it is out of the way when working.

Although not seen in the picture, there is another hole on the opposite side in which the small handle can be inserted if desired.

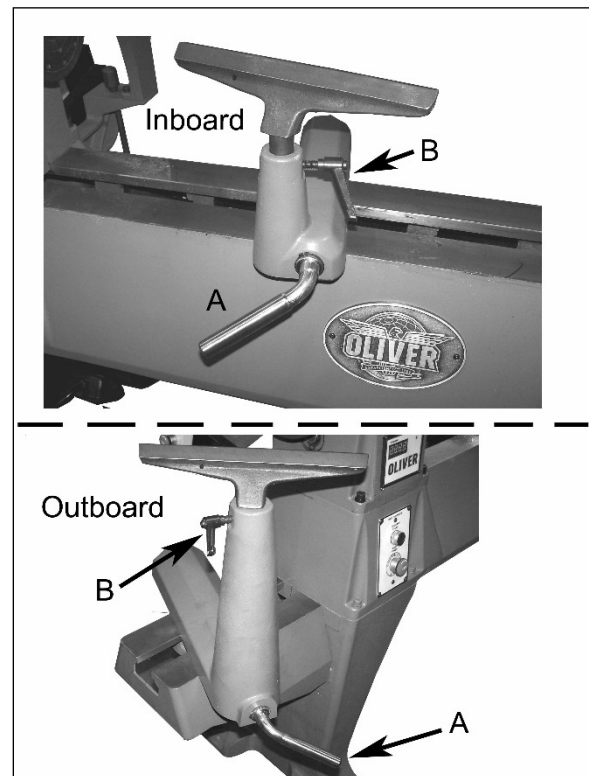


Figure 17

Centers – Installing and Removing

Headstock

1. To install a spur center in the headstock the center should first be mounted to your workpiece and both should be inserted into the headstock at the same time. Make sure both the spur center shaft and the headstock spindle mating surfaces are clean and free of debris.

Warning: Do not drive the workpiece into the spur center while it is in the headstock or bearing failure will occur.

2. To remove the spur center, first remove the workpiece from the lathe, insert the knockout rod through the hole in the outboard spindle then firmly tap the end of the spur center shaft. See Figure 18a.

Note: Make sure to hold onto the spur center while knocking it out so as to prevent it from falling on the floor and damaging it.

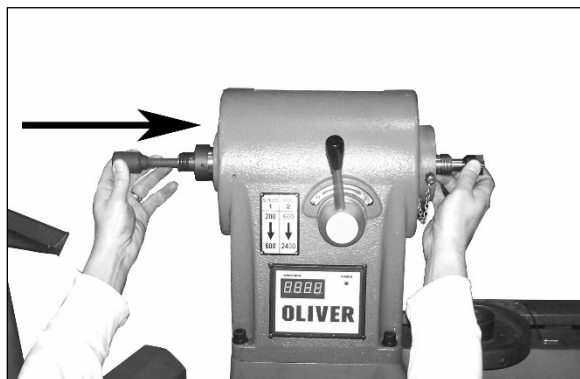


Figure 18a

Tailstock

To remove the live center from the tailstock simply turn the handwheel in order to retract the tailstock spindle into the body as shown by the arrow in Figure 18b.

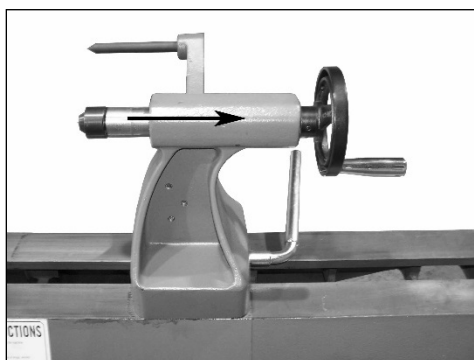


Figure 18b

Face Plates – Removal and Installation

Inboard

1. To remove the face plate first loosen the two set screws 'A' of Figure 19. Insert the indexing pin 'B' into one of the three holes and screw it in until it fully engages one of the indexing holes in the spindle. You may have to turn the face plate by hand until you can feel the pin engage the hole. The spindle should now be locked. The face plate can now be unscrewed counterclockwise off the spindle. If more leverage is needed insert the knock out rod into hole 'C'.
2. Use the reverse procedure to install the face plate back onto the spindle.

Note: Do not use the knock out rod to tighten the face plate or thread damage can occur. Hand tighten only.

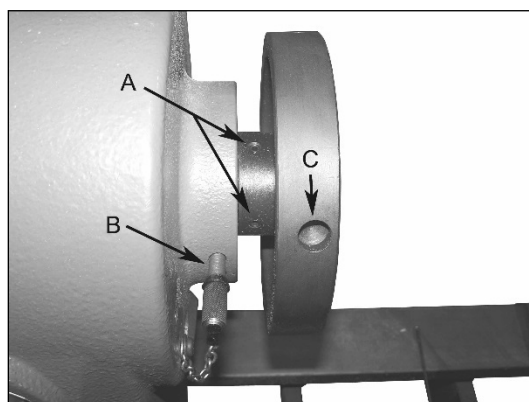


Figure 19

Face Plates – Removal and Installation (cont.)

Outboard

1. The outboard face plate removes in the same fashion as the inboard. Figure 20 shows the face plate already removed from the spindle. Before removing, loosen the two set screws 'A' then lock the spindle using the indexing pin as described in the inboard face plate removal instructions. The face plate diameter should be large enough to give sufficient torque to unscrew by hand. This is done in a counterclockwise rotation. If the faceplate does not budge, insert two metal dowels into two of the mounting holes on the face of the plate. Then use a leverage bar between the two dowels to loosen the face plate.

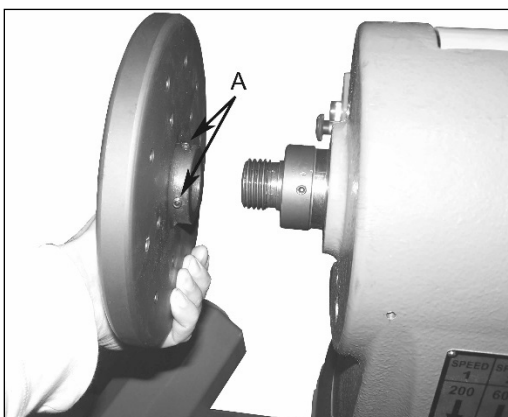


Figure 20

2. Use the reverse procedure to install the face plate back onto the spindle. **Hand tighten only.**

Hi/Lo Range Belt change

Moving the position of the poly-v belt to the other step on the motor sheave and the idler sheave changes the Hi or Low speed range on your Oliver lathe.

1. Remove the access panel located under the outboard face plate as shown in Figure 21. Loosen the three screws just enough so that the panel can slide free.



Figure 21

2. See Figure 22 and loosen the lock handle 'A' and lift up the motor using the handle 'B'. Once it is up all the way, tighten into place with handle 'A'.

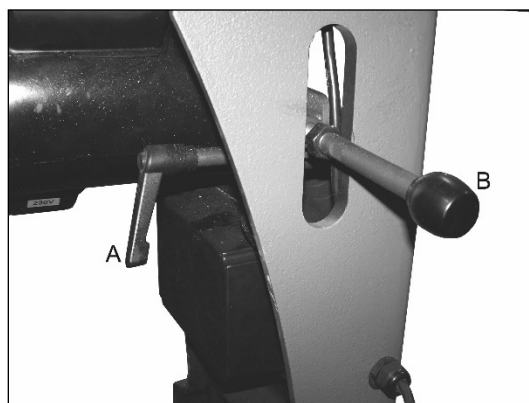


Figure 22

Hi/Lo Range Belt change (cont.)

3. Figure 23 shows the motor pulley and Figure 24 shows the idler pulley once the headstock door is opened. At this point simply move the poly-v belt to the desired step on each pulley.

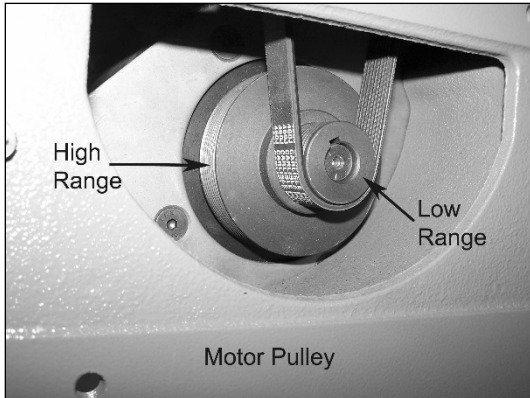


Figure 23

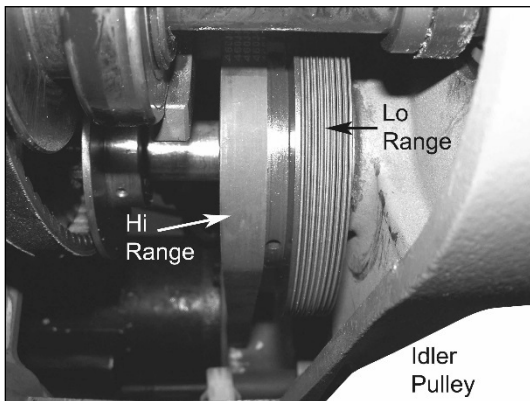


Figure 24

4. Re-tension the belt making sure that the grooves up the belts are seated properly and aligned with the corresponding grooves of both pulleys. Use only light pressure on the motor tension rod and then lock into place with handle 'A' of Figure 22.

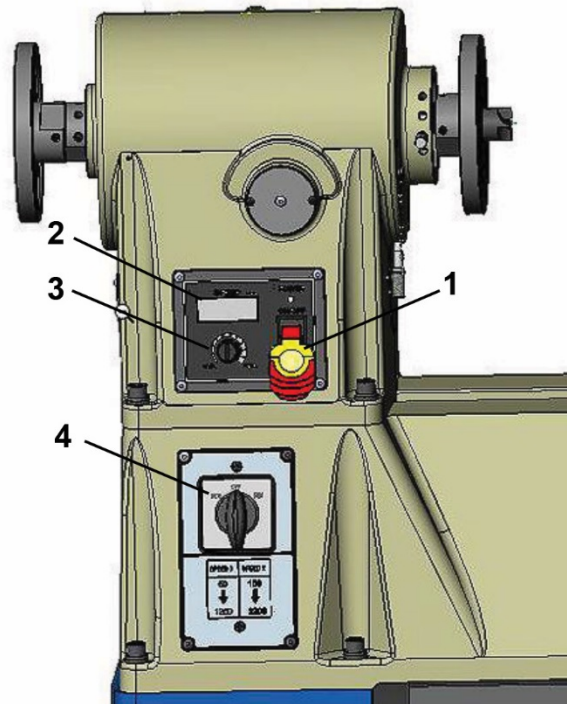
Controls

1. **Start / Stop Paddle Switch:** Insert the yellow safety lockout key and lift up on the paddle to start the lathe. Push down on the paddle to stop the lathe. If leaving the lathe unattended, remove the yellow safety lockout key to prevent unauthorized usage. Store the lockout key in a safe location for authorized persons only.
2. **RPM Indicator:** Displays the current spindle speed.
3. **Speed Control:** Spindle RPM's are controlled with this control. To change the speed, rotate the control until the desired speed is displayed on the indicator.
4. **Reversing Switch:** The reversing switch can be used to change the spindle rotation.

Important: Only change the speed when the motor is running or damage may occur.

4. **Reversing Switch:** The reversing switch can be used to change the spindle rotation.

Important: Allow the motor to come to a complete stop before reversing direction or damage may occur.



Indexing

The indexer makes it possible to cut evenly spaced features in a workpiece while keeping the lathe headstock spindle locked; for example, when cutting flutes on a spindle blank with a router, while the spindle blank is secured within the lathe centers.

There are 12 holes in the spindle collar spaced 30° apart, and 4 holes in the headstock casting which accept the index pin (see Figures 27 & 28). The combination of these holes will allow you to mark your workpiece for evenly spaced features.

1. To use the indexer, thread the index pin (Figure 27) into one of the four holes until the index pin engages the spindle and prevents it from turning. This will be your first indexing position.
2. Unscrew and remove the index pin, and look down the hole, carefully counting the number of holes as you rotate the spindle. Continue to rotate the spindle until you reach the hold needed for your second flute cutting, then re-insert the index pin.
3. Refer to the chart on page 15 to determine which holes to place the index in relative to the number of flutes desired in your workpiece.

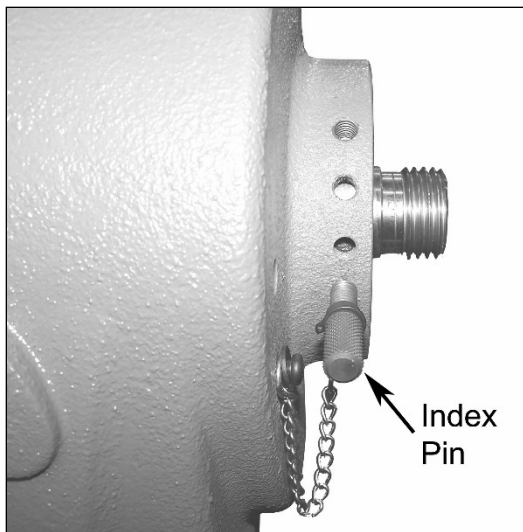


Figure 27

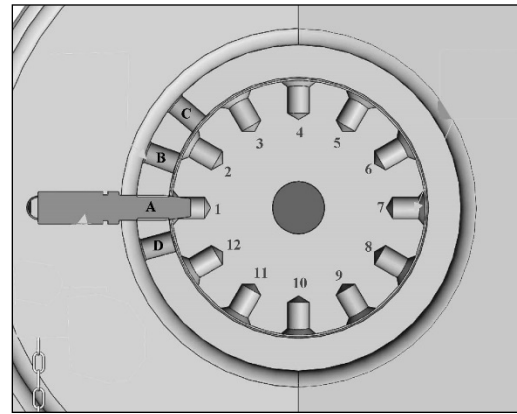
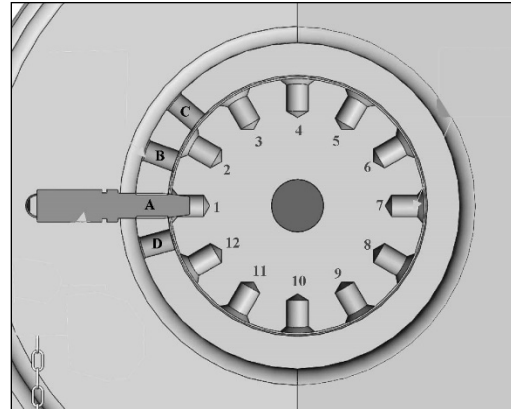


Figure 28

Using the Indexer

Using the chart

The indexer is shown as viewed from the tailstock end of the lathe. Points, A, B, C, and D are the holes in the head casting. The holes in the spindle collar may be considered as numbered 1 through 12.



Example: You wish to rout 8 flutes on your spindle blank. Locate the '8' in the 'No. of Flutes' column; each flute angle will be 45° . The index pin should first be inserted into hole combination 'A-1'. Make your first flute at this position. Back off the index pin and while looking down the 'A' hole rotate the spindle so the number 4 hole is aligned with the 'A' and re-insert the pin. Repeat for flutes 7 and 10. Finally back off the index pin and rotate the spindle until the index pin can be inserted into hole combination 'D-2' then 'D-5', 'D-8' and 'D-11'.

# of Flutes	Angle	A	B	C	D
1	360	1			
2	180	1, 7			
3	120	1, 5, 9			
4	90	1,4,7,10			
6	60	1,3,5,7,9,11			
8	45	1,4,7,10			2,5,8,11
9	40	1,5,9	4,8,12		
12	30	1 thru 12			
18	20	1,3,5,7,9,11	2,4,6,8,10,12	2,4,6,8,10,12	
24	15	1 thru 12			1 thru 12
36	10	1 thru 12	1 thru 12	1 thru 12	

Recommended Lathe Speeds

Diameter of Work	Roughing RPM	General Cutting RPM	Finishing RPM
Under 2"	1520	3000	3000
2" to 4"	760	1600	2480
6" to 8"	510	1080	1650
8" to 10"	380	810	1240
10" to 12"	300	650	1000
12" to 14"	255	540	830
14" to 16"	220	460	710
16" to 20"	190	400	620

Maintenance

WARNING!

Before doing maintenance on the lathe, disconnect the lathe from its power source. Failure to do so could result in serious injury!

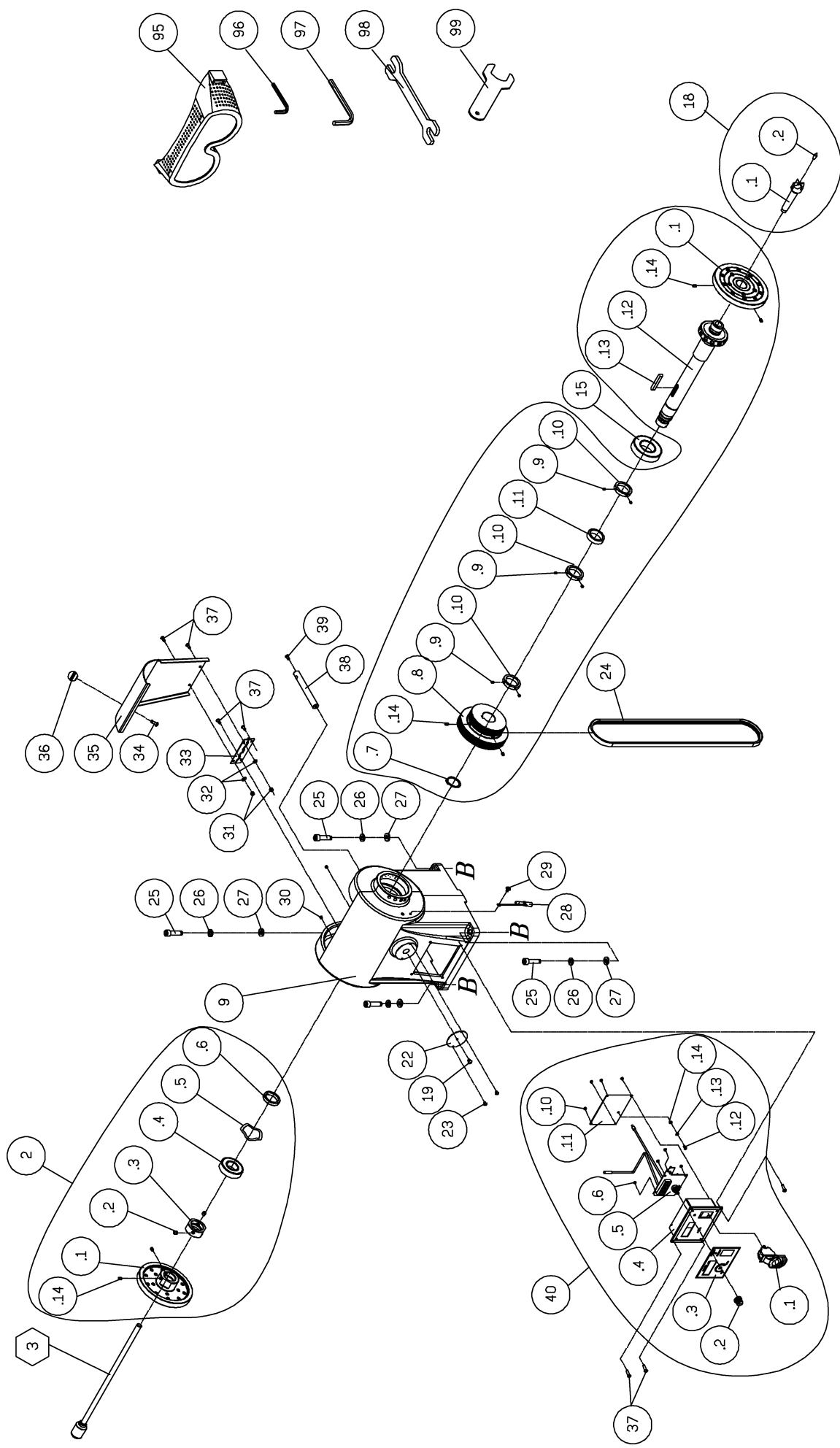
Maintenance on your Oliver lathe should be done at periodic intervals to ensure that the machine is in good working order. Inspection and maintenance should be performed at least twice a year but more often if the lathe receives constant use.

1. Check all fasteners to make sure they are tight and check all adjustments that they are in order.
2. Clean and oil the late beds so that the headstock, tailstock and tool support base will slide easily. Clean any rust spots that may develop on the bed with a commercial rust remover.
3. Use compressed air to blow out the interior of the headstock in order to keep chips and sawdust from accumulating on the belts and pulleys.
4. Clean out the morse tapers on both the headstock and tailstock. Commercially available cleaners may be acquired form tool stores.
5. Check the drive belt for tightness. It should be snug but not overly tight.
6. Use a mill file to remove any nicks or dings from the tool rests.
7. Clean and lubricate the tailstock ram and locking mechanism.

Troubleshooting

Trouble	Probable Cause	Remedy
Motor fails to develop full power	Power line overload	Correct overload condition
	Undersize wires in power supply	Increase supply wire size
	Worn motor	Replace motor
Motor or spindle stalls or will not start	Excessive cut	Reduce depth of cut
	Improper belt adjustment, or worn or broken belt	Adjust or replace belt as needed
	Improper cooling of motor	Blow out sawdust from motor cooling fan
	Worn spindle bearings	Replace bearings
	Worn motor	Replace motor
Excessive vibration	Workpiece warped, out of round, has major flaw, or was improperly prepared for turning	Correct by planning or sawing workpiece, or discard entirely and use new workpiece
	Worn spindle bearings	Replace spindle bearings
	Worn drive belt	Replace motor
	Motor mount lock handle is loose	Tighten lock handle
	Lathe on uneven surface	Adjust levelers
Tools tend to grab or dig in	Dull tools	Keep tools sharp
	Tool support set too far from workpiece	Reposition tool support height
	Improper tool being used	Use correct tool for operation being performed
Tailstock moves when applying pressure	Cam lock needs adjusting	Tighten cam lock nut
	Lathe bed and tailstock mating surfaces are greasy or oily	Remove tailstock and clean surfaces with a cleaner/degreaser. Re-apply light coat of oil to lathe bed surface

HEADSTOCK



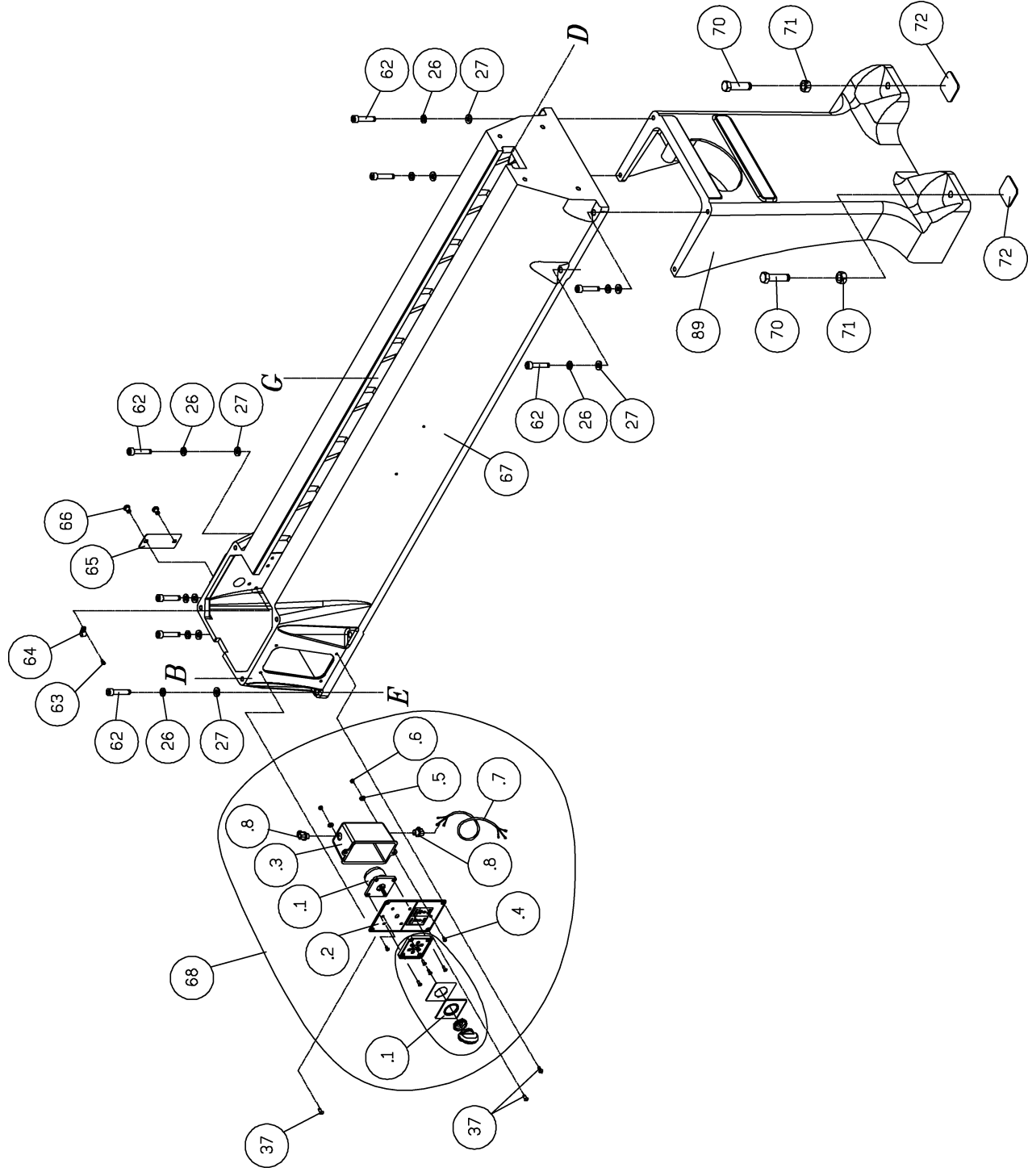
2018 Parts List

Index	Part's Number	Description	Specification	QTY
HEADSTOCK				
2.1	051037-902	Faceplate		2
2.2	001903-105	Set Screw	M8*1.25P*8	2
2.3	360956-902	Collar	M35*1.5P	1
2.4	030202-002	Ball Bearing	6007	1
2.5	006714-100	Wave Washer	WW6305(47.2*60.2)	1
2.6	360957-902	Bushing		1
2.7	010014-000	S-Ring	STW-35	1
2.8	300089-000	Pulley		1
2.9	001901-101	Set Screw	M5*0.8P*5	6
2.10	380951-902	Bushing		3
2.11	660120-000	Sensor Ring		1
2.12	361127-000	Spindle		1
2.13	012006-001	Key	8*8*40	1
2.14	001902-105	Set Screw	M6*1.0P*12	6
3	380950-902	Knock Out Bar		1
9	051257-000	Headstock		1
15	030223-002	Ball Bearing	6208	1
18	922506-000	Spur Center Assembly		1
18.1	380952-901	Spur Center		1
18.2	380443-906	Tip		1
19	000804-104	Round Head Screw	M5*0.8P*6	1
22	173742-904	Cover		1
23	000805-101	Round Head Screw	M4*0.7P*6	2
24	014344-000	V-Belt	540J-8	1
25	000105-105	Cap Screw	M10*1.5P*40	4
26	006307-100	Spring Washer	10.2*18.5	12
27	006001-069	Flat Washer	10*20*3t	12
28	921915-000	Knurled Screw Assembly		1
29	001602-701	Pan Head Screw w/Flat Washer		1
30	660002-000	Pan Head Screw	M5*0.8P*10/5*12*0.8t	2
31	008302-100	Set Screw	M5*0.8P/(8B*6H)	2
32	006001-012	Flat Washer	5.3*12*1.0t	6
33	230316-902	Long Hinge		1
34	003301-203	Pan Head Screw	1/4"-20NC*5/8"	1
35	172660-164	Guard		1
36	230156-615	Knob		1
37	000804-107	Hex Socket Screw	M5*0.8P*12	12
38	361124-901	Shaft		1
39	000303-103	Pan Head Screw	M5*0.8P*10/5*12*0.8t	1
40	923683-000	Digital Display Switch Box Assembly		1
40.1	830004-001	Safety Switch		1
40.2	240057-000	Knob		1
40.3	572468-000	Switch Box Plate		1
40.4	250783-615	Digital Display Switch Box		1
40.5	490884-000	Digital Display		1

2018 Parts List

Index	Part's Number	Description	Specification	QTY
HEADSTOCK				
40.10	001101-205	Self-Tapping Screw	M3*1.06P*6	8
40.11	172666-000	DigitAL Display Cover		1
40.12	000302-102	Pan Head Screw	M4*0.7P*8	1
40.13	006501-100	Toothed Washer	4.3*8.5(BW-4)	1
40.14	008002-100	Hex Nut	M4*0.7P(7B*3.2H)	1
95	042607-000	Goggle		1
96	040003-000	Hex Wrench	3mm	1
97	040006-000	Hex Wrench	6mm	1
98	040207-000	Double Open-End Wrench	22*24	1
99	172894-902	Open-End Wrench		1
NS	471003-047	Power Cord Not Shown	SJT14AWG*1C*100mm Black	1
NS	471003-048	Power Cord Not Shown	SJT14AWG*1C*100mm White	1

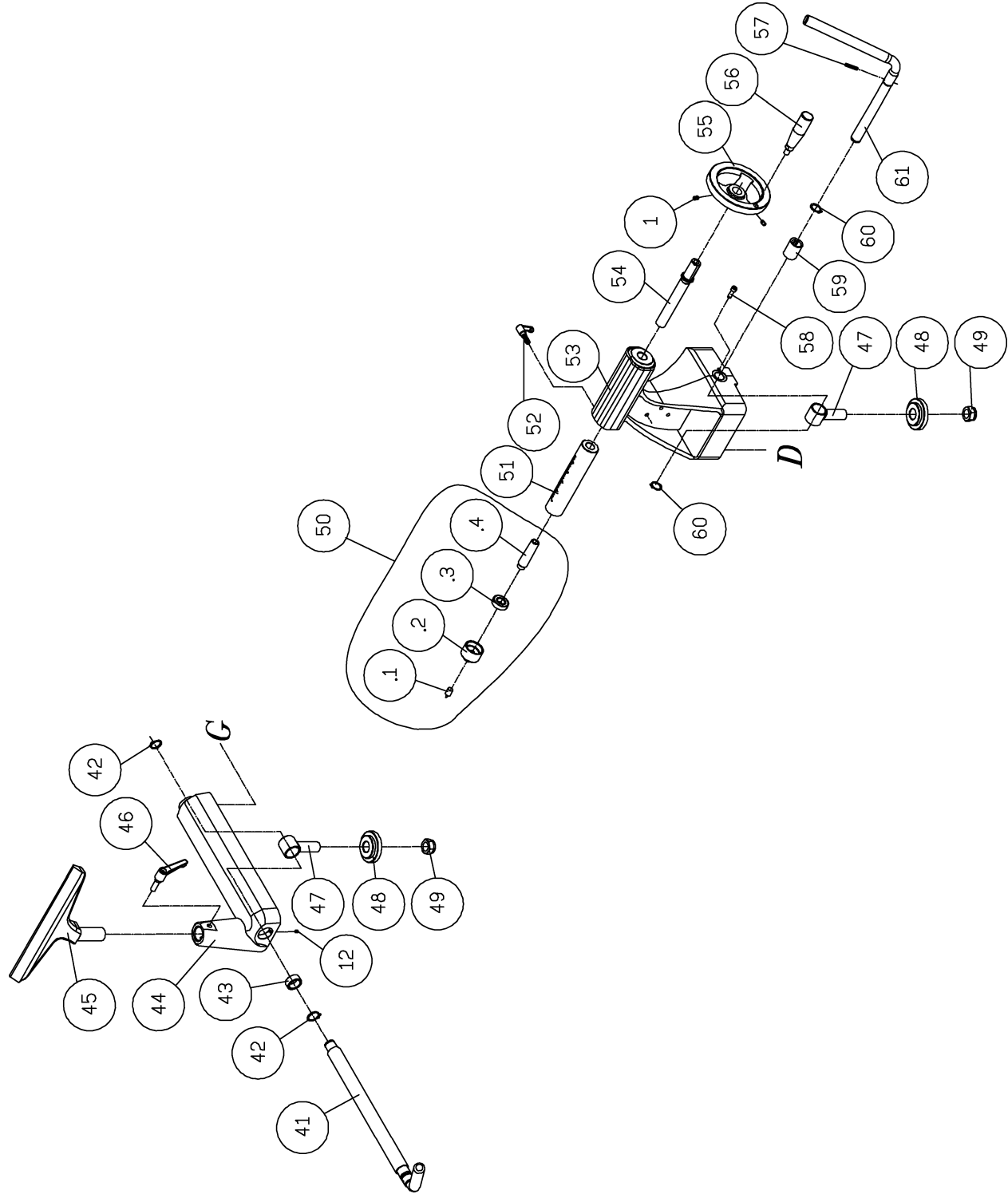
LATHE BED



2018 Parts List

Index	Part's Number	Description	Specification	QTY
LATHE BED				
26	006307-100	Spring Washer	10.2*18.5	12
27	006001-069	Flat Washer	10*20*3t	12
37	000804-107	Hex Socket Screw	M5*0.8P*12	12
62	000105-107	Cap Screw	M10*1.5P*50	8
63	000101-701	Cap Screw	M4*0.7P*8	1
64	021103-000	Wire Clip	ACC-3	1
65	173743-904	Bed Cover		1
66	000305-102	Pan Head Screw	M8*1.25P*12	2
67	051031-000	Bed		1
68	950623-000	Button Switch Assembly		1
68.1	490883-000	Forward/Reverse Switch		1
68.2	573959-000	Button Switch Label		1
68.3	250982-615	Switch Box		1
68.4	000303-104	Pan Head Screw	M5*0.8P*12	2
68.5	006001-012	Flat Washer	5.3*12*1.0t	2
68.6	008004-100	Hex Nut	M5*0.8P(8B*4H)	2
68.7	473001-020	Power Cord	SJT18AWG*3C*650mm	1
68.8	021601-000	Wire Proector	1/2"	2
70	000006-102	Hex Screw	M16*2.0P*60	4
71	008011-100	Hex Nut	M16*2.0P(24B*13H)	5
72	173740-902	Foot		4
89	051033-000	Stand, Right		1

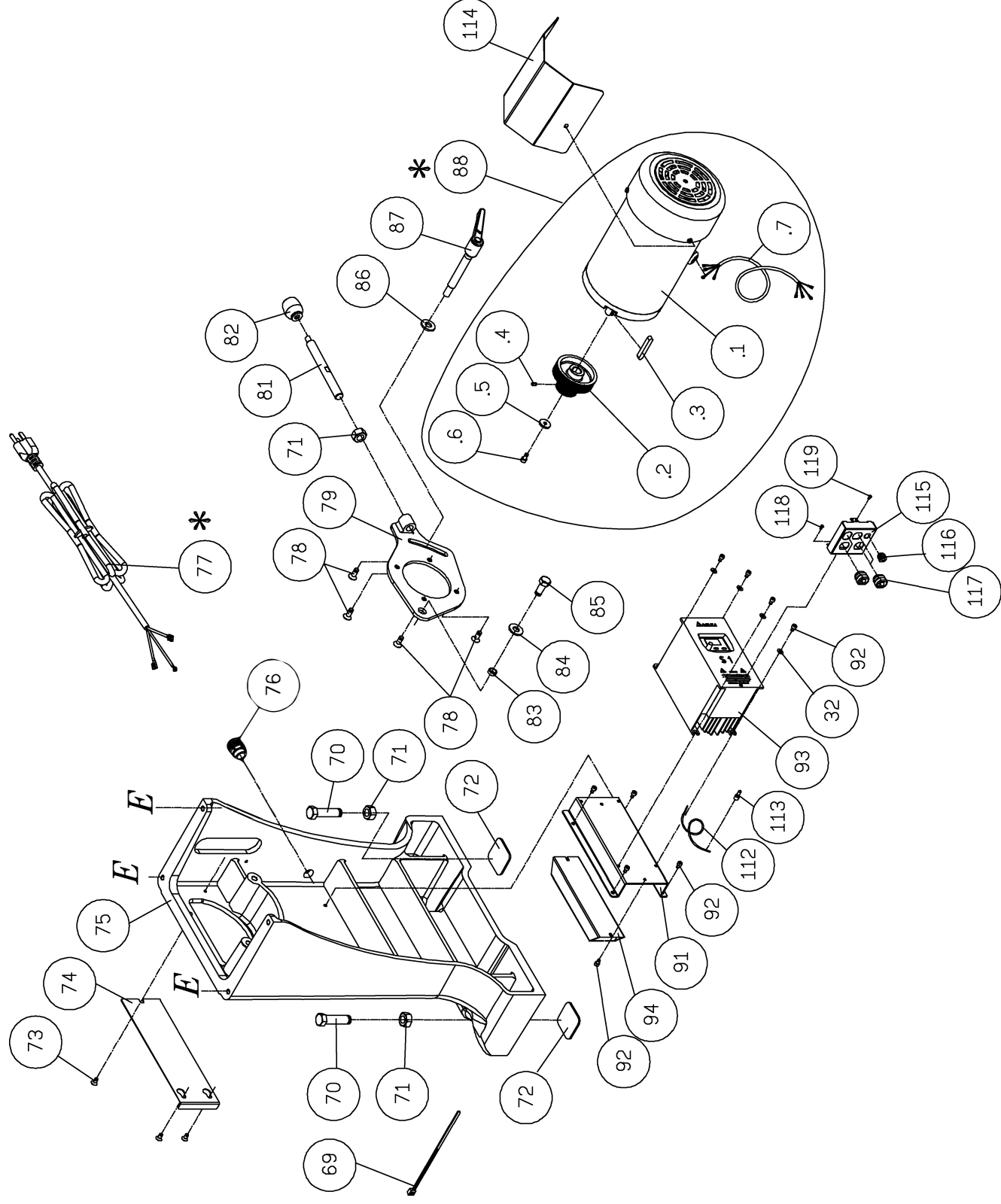
TOOL REST-TAIL STOCK



2018 Parts List

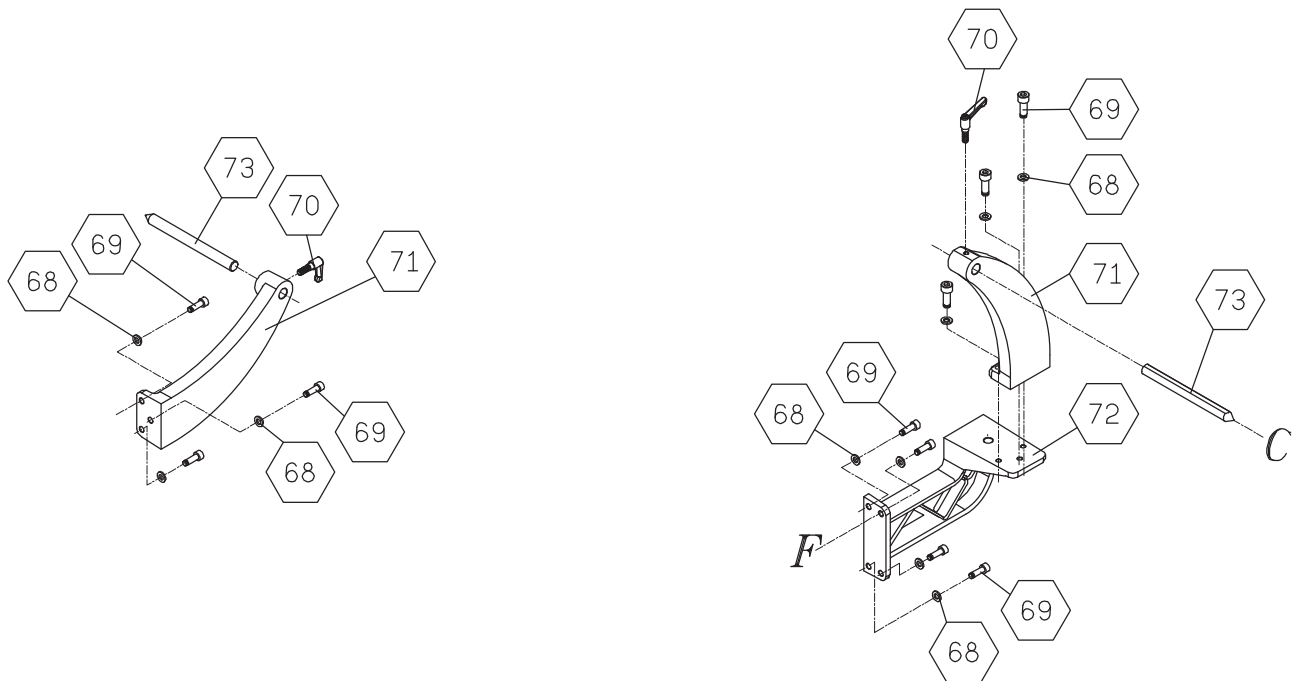
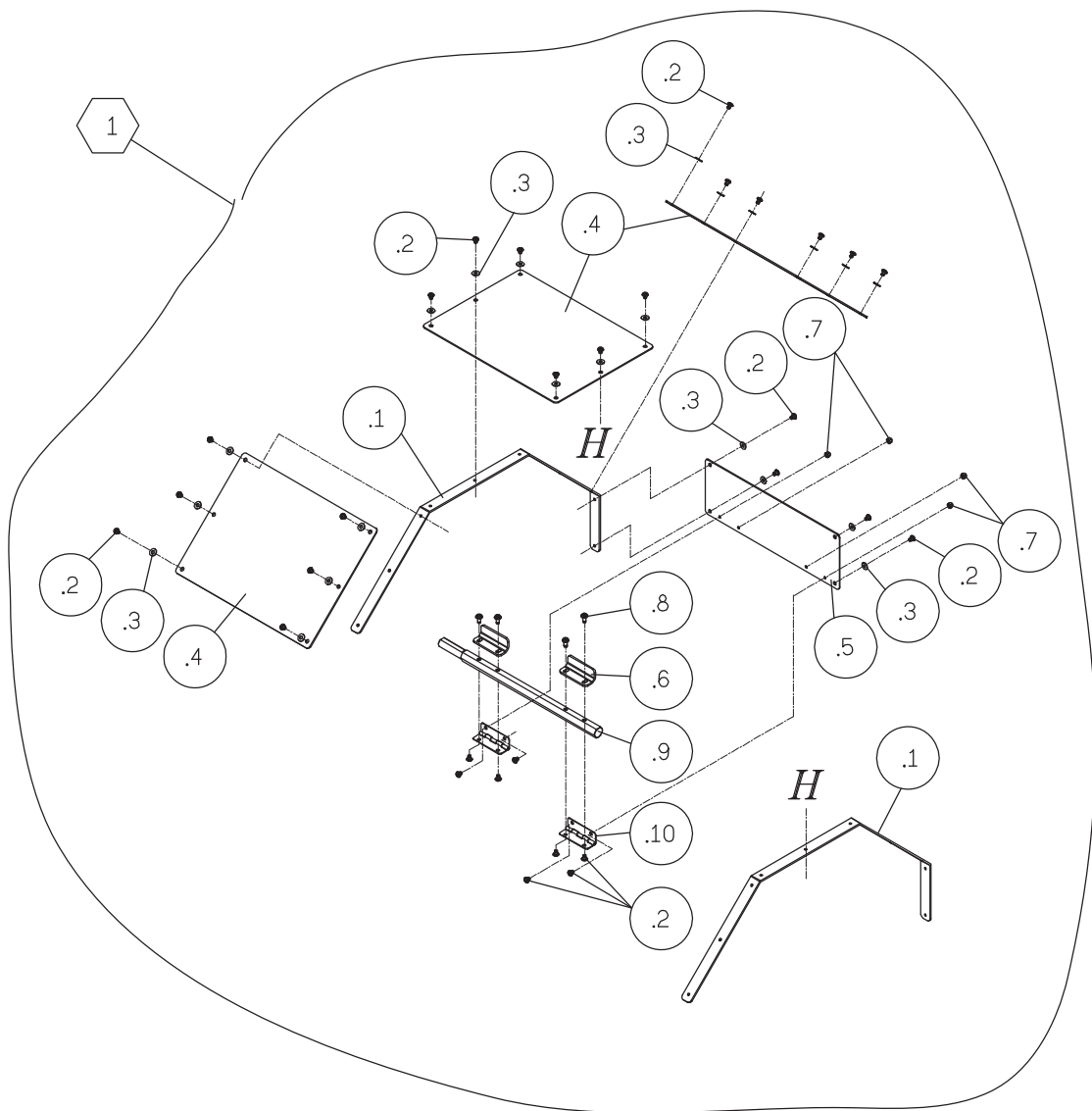
Index	Part's Number	Description	Specification	QTY
TOOL REST - TAIL STOCK				
1	001902-109	Set Screw	M6*1.0P*6	2
12	001901-101	Set Screw	M5*0.8P*5	1
41	360918-907	Banjo Lock Rod		1
42	010035-000	S-Ring	STW-22	2
43	380953-902	Bushing		1
44	051036-000	Banjo		1
45	070052-902	Tool Rest		1
46	921423-000	Lock Handle Assembly	3/8"-16UNC-1"L	1
47	380946-902	Adjust Rod		2
48	380504-901	Lock Washer		2
49	009101-200	Lock Nut	3/4"-10NC*17mm	2
50	922456-000	Live Center Assembly		1
50.1	380415-901	Top Point		1
50.2	380413-901	Cap		1
50.3	030112-002	Ball Bearing	6002	1
50.4	380414-901	Taper Shank		1
51	360923-000	Tailstock Scale Sleeve		1
52	921456-000	Lock Screw Assembly	5/16"-18UNC-20L	1
53	051035-000	Tailstock		1
54	380510-901	Tailstock Screw		1
55	240072-000	Handwheel		1
56	230114-906	Handle		1
57	011003-110	Spring Pin	5*40	1
58	000103-707	Cap Screw	M6*1.0P*20	1
59	130190-000	Socket		1
60	010030-000	S-Ring	STW-19	2
61	360920-907	Lock Handle		1

MOTOR INVERTER



2018 Parts List

Index	Part's Number	Description	Specification	QTY
Motor Inverter				
69	021002-000	Zip Tie	ALT-250M(White)	3
70	000006-102	Hex Screw	M16*2.0P*60	4
71	008011-100	Hex Nut	M16*2.0P(24B*13H)	5
72	173740-902	Foot		4
73	000403-103	Phil Pan Head Screw	M6*1.0P*12	3
74	172665-164	Stand Plate		1
75	051032-000	Stand, Left		1
76	021377-000	Strain Relief	MG25AS-10B (No Nut)	1
77	WT02-06	Power Cord		
78	000704-101	Socket Hex Screw	M8*1.25P*20	4
79	172661-902	Motor Plate		1
81	360919-902	Knob Shaft		1
82	250034-615	Knob		1
83	380949-902	Bushing		1
84	006001-136	Flat Washer	12.2*23*2.0t	1
85	000005-111	Hex Screw	M12*1.75*30	1
86	006001-091	Flat Washer	13*28*3.0t	1
87	230315-000	Lock Bolt		1
88	WT02-01	Motor Assembly		1
88.1	WT02-01.1	Motor Only		1
88.2	WT02-01.2	Motor Pulley		1
88.3	WT02-01.3	Key		1
88.4	WT02-01.4	Set Screw		1
88.5	WT02-01.5	Washer		1
88.6	WT02-01.6	Bolt		1
91	173739-000	Invertor Holder		1
92	000102-102	Cap Screw	M5*0.8P*8	10
93	WT02-0Z	Inverter		
94	490886-000	Brake Resistor	BR300W100 (300W100Ω) Aluminum	1
112	471001-031	Power Cord	SJT18AWG*1C*100mm White	1
113	495000-000	Closed-End Terminal	TM-2	1
114	173825-904	Motor Guard		1
115	173826-905	Inverter Wire Holder		1
116	020013-000	Strain Relief	SB5M-2	1
117	020004-000	Strain Relief	SB8R-1	4
118	000301-201	Pan Head Screw	M3*0.5P*6	2
119	000301-202	Pan Head Screw	M3*0.5P*12	1



GUARD & COMPARATOR

2018 Parts List

Index	Part's Number	Description	Specification	QTY
Guard & Comparator				
1	922511-000	Guard Assy		1
1.1	172659-904	Guard Edge		2
1.2	000303-101	Pan Head Screw	M5*0.8P*6	30
1.3	006001-012	Flat Washer	5.3*12*1.0t	22
1.4	250782-620	Guard		3
1.5	172663-904	Fixing Board		1
1.6	172662-902	Bracket		2
1.7	008104-100	Hex. Nut	M5*0.8P	4
1.8	002402-703	Pan Head Lock Screw w/Washer	M5*0.8P*10-5*10*1.0t	4
1.9	380948-902	Guard Shaft		1
1.10	230314-902	Short Hinged Plate		2
68	006001-049	Flat Washer	8.5*16*2	10
69	000104-708	CAP Screw	M8*1.25*25	10
70	921456-000	Screw Lock Handle Ass'y	5/16"-18UNC-20L	1
71	051042-180	Bracket		2
72	051041-180	Bracket Seat		1
73	360921-902	Spur Center		2

