



7150/7160 Cyclone Dust Collector

Owner's Manual



Oliver Machinery

Seattle, WA
info@olivermachinery.net

M-7150/7160 09/2011

© Copyright 2003
www.olivermachinery.net

IMPORTANT SAFETY RULES

Wood working can be dangerous if safe and proper operating procedures are not followed. As with all machinery, there are certain hazards involved with the operation of the product. Using the machine with respect and caution will considerably lessen the possibility of personal injury. However, if normal safety precautions are overlooked or ignored, personal injury to the operator may result. Safety equipment such as guards, push sticks, hold-downs, featherboards, goggles, dust masks and hearing protection can reduce your potential for injury. But even the best guard won't make up for poor judgment, carelessness or inattention. Always use common sense and exercise caution in the workshop. If a procedure feels dangerous, don't try it. Figure out an alternative procedure that feels safer. REMEMBER: Your personal safety is your responsibility.

WARNING: FAILURE TO FOLLOW THESE RULES MAY RESULT IN SERIOUS PERSONAL INJURY

1. FOR YOUR OWN SAFETY, READ INSTRUCTION MANUAL BEFORE OPERATING THE TOOL. Learn the tool's application and limitations as well as the specific hazards peculiar to it.
2. KEEP GUARDS IN PLACE and in working order
3. ALWAYS WEAR EYE PROTECTION
4. GROUND ALL TOOLS. If tool is equipped with three-prong plug, it should be plugged into a three-hole electrical receptacle. If an adapter is used to accommodate a two-prong receptacle, the adapter plug must be attached to a known ground. Never remove the third prong.
5. REMOVE ADJUSTING KEYS AND WRENCHES. Form habit of checking to see that keys and adjusting wrenches are removed from tool before turning it "ON".
6. KEEP WORK AREA CLEAN. Cluttered areas and benches invite accidents.
7. DON'T USE IN DANGEROUS ENVIRONMENT. Don't use power tools in damp or wet locations, or expose them to rain. Keep work area well lighted.
8. KEEP CHILDREN AND VISITORS AWAY. All children and visitors should be kept a safe distance from work area.
9. MAKE WORKSHOP CHILDPROOF – with padlocks, master switches, or by removing starter keys.
10. DON'T FORCE TOOL. It will do the job better and be safer at the rate for which it was designed.
11. USE RIGHT TOOL. Don't force tool or attachment to do a job for which it was not designed.
12. WEAR PROPER APPAREL. No loose clothing, gloves, neck-ties, rings, bracelets, or other jewelry to get caught in moving parts. Non-slip footwear is recommended. Wear protective hair covering to contain long hair.
13. ALWAYS USE SAFETY GLASSES. Wear safety glasses. Everyday eyeglasses only have impact resistant lenses; they are not safety glasses. Also use face or dust mask if cutting operation is dusty.
14. SECURE WORK. Use clamps or a vise to hold work when practical. It's safer than using your hand and frees both hands to operate tool.
15. DON'T OVERREACH. Keep proper footing and balance at all times.
16. MAINTAIN TOOLS IN TOP CONDITION. Keep tools sharp and clean for best and safest performance. Follow instructions for lubricating and changing accessories.
17. DISCONNECT TOOLS before servicing and when changing accessories such as blades, bits, cutters, etc.
18. USE RECOMMENDED ACCESSORIES. The use of accessories and attachments not recommended by us may cause hazards or risk of injury to persons.
19. REDUCE THE RISK OF UNINTENTIONAL STARTING. Make sure switch is in "OFF" position before plugging in power cord.
20. NEVER STAND ON TOOL. Serious injury could occur if the tool is tipped or if the cutting tool is accidentally contacted.
21. CHECK DAMAGED PARTS. Before further use of the tool, a guard or other part that is damaged should be carefully checked to ensure that it will operate properly and perform its intended function – check for alignment of moving parts, binding of moving parts, breakage of parts, mounting, and any other conditions that may affect its operation. A guard or other part that is damaged should be properly repaired or replaced.
22. DIRECTION OF FEED. Feed work into a blade or cutter against the direction of rotation of the blade or cutter only.
23. NEVER LEAVE TOOL RUNNING UNATTENDED. TURN POWER OFF. Don't leave tool until it comes to a complete stop.
24. DRUGS, ALCOHOL, MEDICATION. Do not operate tool while under the influence of drugs, alcohol or any medication.
25. MAKES SURE TOOL IS DISCONNECTED FROM POWER SUPPLY while motor is being mounted, connected or reconnected.
26. WARNING: The dust generated by certain woods and wood products can be injurious to your health. Always operate machinery in well ventilated areas and provide for proper dust removal. Use wood dust collection systems whenever possible.

IMPORTANT SAFETY RULES FOR DUST COLLECTORS

WARNING: Basic precautions should always be followed when using your dust collector. To reduce the risk of injury, electrical shock or fire, comply with the safety rules listed below:

1. READ and understand the instruction manual before operating the dust collector.
2. DO NOT leave the dust collector plugged into the electrical outlet. Unplug dust collector from outlet when not in use and before servicing, changing bags, unclogging and cleaning.
3. ALWAYS turn the power switch "OFF" before unplugging the dust collector.
4. WARNING: TO REDUCE THE RISK OF ELECTRICAL SHOCK do not use outdoors or on wet surfaces. Use for dry pickup only!
5. FOLLOW all electrical and safety codes, including the National Electric Code (NEC) and the Occupational Safety and Health Regulations (OSHA). All electrical connections and wiring should be made by qualified personnel only.
6. DO NOT use the dust collector to pick up flammable or combustible liquids, such as gasoline. NEVER use the dust collector near any flammable or combustible liquids.
7. USE the dust collector to pick up wood materials only. DO NOT use the dust collector to pick up metal shavings, dust, water, or parts.
8. NEVER use the dust collector to dissipate fumes or smoke. NEVER pick-up anything that is burning or smoking, such as cigarettes, matches or hot ashes.
9. USE only as described in this manual.
10. DO NOT pull the dust collector by the power cord. NEVER allow the power cord to come in contact with sharp edges, hot surfaces, oil or grease.
11. DO NOT unplug the dust collector by pulling on the power cord. ALWAYS grasp the plug, not the cord.
12. DO NOT handle the plug or dust collector with wet hands.
13. REPLACE a damaged cord immediately. DO NOT use a damaged cord or plug. If the dust collector is not operating properly, or has been damaged, left outdoors or has been in contact with water, return it to an Authorized Service Center for service.
14. DO NOT use the dust collector as a toy. DO NOT use near or around children.
15. DO NOT insert fingers or foreign objects into the dust intake ports. Keep hair, loose clothing, fingers, and all body parts away from openings and moving parts of the dust collector.
16. DO NOT use the dust collector without a filter bag and dust collection bag in place and properly secured.
17. DO NOT operate the dust collector with unused dust intake ports uncapped. ALWAYS cover exposed dust intake ports.
18. PERIODICALLY INSPECT dust and filter bags for any cuts, rips or tears. NEVER operate the dust collector with a damaged bag or vacuum hose.
19. The dust collector is designed for home use or light commercial duty ONLY!
20. CONNECT dust collector to a properly grounded outlet only. See Grounding Instructions.

GROUNDING INSTRUCTIONS

The appliance must be grounded, if it should malfunction or breakdown, grounding provides a path of least resistance for electric current to reduce the risk of electric shock. This appliance is equipped with a cord having equipment-ground conductor and grounding plug. The plug must be inserted into an appropriate outlet that is properly installed and grounded in accordance with all local codes and ordinances.

WARNING

Improper connection of the equipment-grounding conductor can result in a risk of electric shock. Check with a qualified electrician or service person if you are in doubt as to whether the outlet is properly grounded. Do not modify the plug provided with the appliance – if it will not fit the outlet; have a proper outlet installed by a qualified electrician.

FOR GROUNDED, CORD-CONNECTED APPLIANCES:

This appliance is for use on a circuit having a normal rating more than 120 volt and is factory-equipped with a specific electric cord and plug to permit connection to a proper electric circuit. Make sure that the appliance is connected to an outlet having the same configuration as the plug. No adaptor should be used with this appliance. If the appliance must be reconnected for use on a different type of electric circuit, qualified service personnel should make the reconnection.

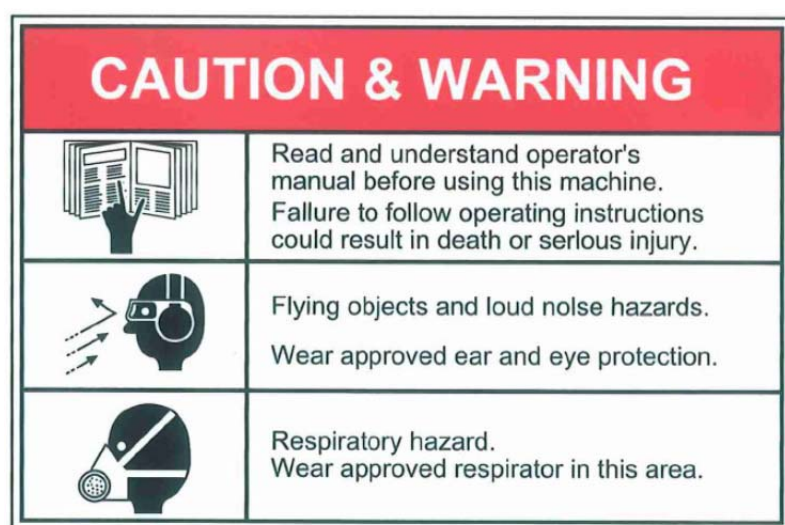
FOR A PERMANENTLY CONNECTED APPLIANCE:

This appliance must be connected to a grounded metal, permanent wiring system; or an equipment-grounding conductor must be run with the circuit conductors and connected to the equipment grounding terminal or lead on the appliance.

Table of Contents

Page Number

Safety Rules	2-3
Grounding Rules	4
Table of Contents	5
Specifications	5
Unpacking Contents	6
Hardware Package	7
Assembly	8-10
Exploded Parts Diagram	11
Parts List	12-13
Warranty	14

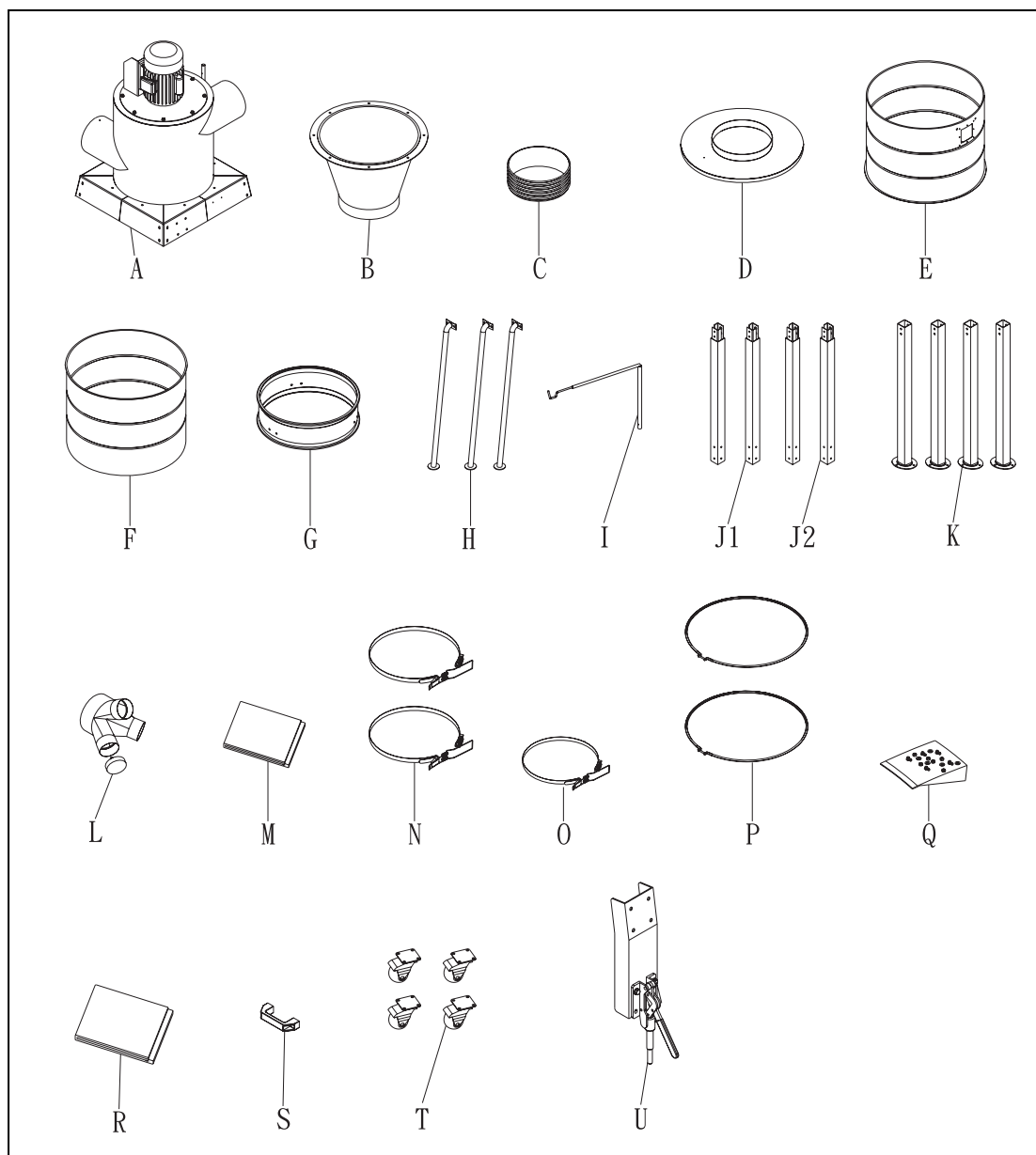


**Do Not Operate
This Unit Without
Dust Collection
Hose or Pipe is
installed onto the
dust collection
inlet port!**

Specifications

	7150	7160
Motor	3HP, 1 Phase	5HP, 1 Phase
Amps	18	28
Air Flow Volume CFM	2000	3500
Static Pressure (max.)	13 InH ₂ O	16 InH ₂ O
Impellor Diameter (in.)	14	16
Inlet Diameter (in.)	8	10
Bag Diameter	19-5/8"	23-5/8"
Drum Size	60 gallon	60 gallon
Sound Rating @ 10 feet	75-85 db	75-85 db
Overall size (lxwxh) (in.)	67 x 45 x 90	71 x 51 x 118
Net weight (lbs)	205	295
Gross weight (lbs)	253	405

UNPACKING & CHECKING CONTENTS:



A: Collector Housing

B: Reducing Housing

C: Hose

D: Drum Lid

E: Upper Drum

F: Lower Drum

G: Collector

H: Housing Support

I: Bag Hanger

J1: Upper Support(LEFT)

J2: Upper Support(RIGHT)

K: Lower Support

L: Inlet

M: Lower PE Bag

N: 101 Clamp

O: 8" Clamp

P: Hose Clamp 12-1/2"

Q: Hardware pack

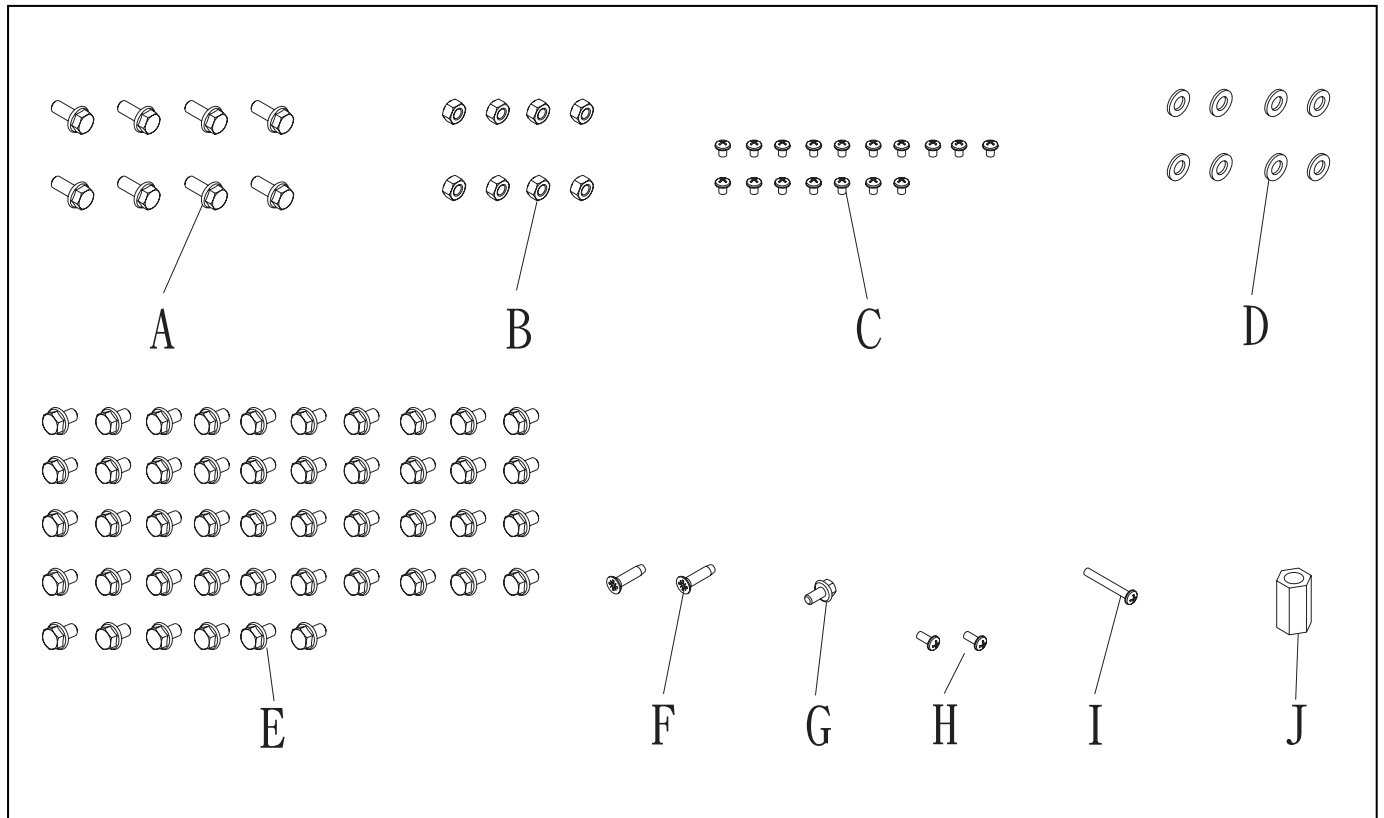
R: Upper Collecting Bag

S: Handle

T: 2" Wheel

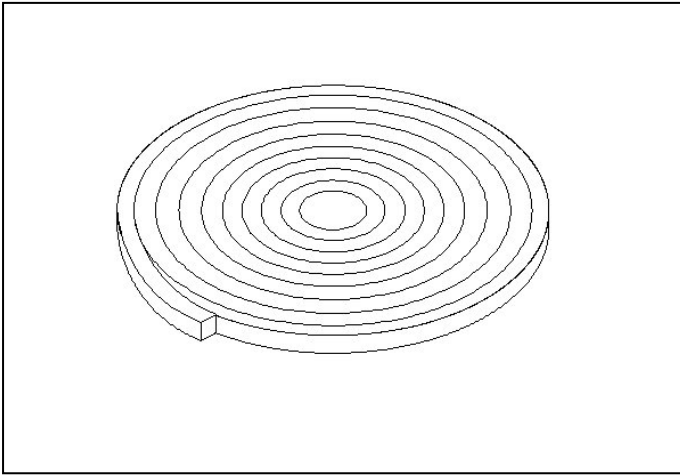
U: Quick Handle Set

Hardware package:

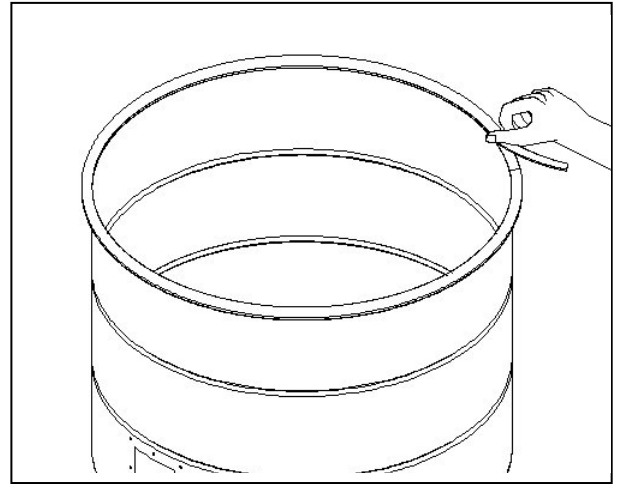


NO.	<u>Description</u>	<u>Specification</u>	Q'TY	Part List No.
A	Hex Head Bolt	5/16"*1"	8	NO.8
B	Nut	5/16"	8	NO.10
C	Flange Phillip Head Screw	3/16"*3/8"	17	NO.13
D	Washer	5/16"*23	8	NO.9
E	Flange Hex Head Bolt	5/16"*1/2"	38	NO.14
F	Flat Screw	1/4"*5/8"	2	NO.26
G	Flange Hex Head Bolt	1/4"*1/2"	1	NO.31
H	Flange Phillip Head Screw	3/16"*1/2"	2	NO.49
I	Flange Phillip Head Screw	1/4"*2-1/2"	1	NO.24
J	Long Nut	1/2"	1	NO.53

ASSEMBLY INSTRUCTIONS:



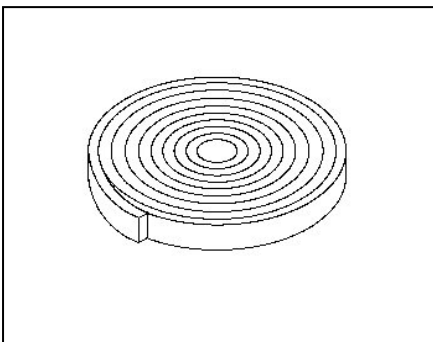
(FIG 1)



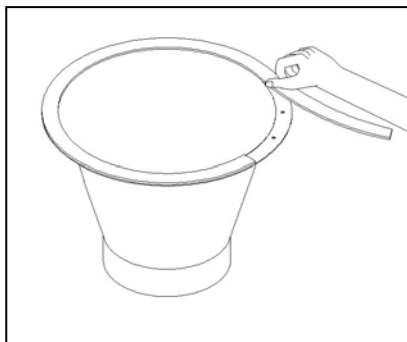
(FIG. 2)

Step 1. Open the package and take out the foam.(See FIG. 1)

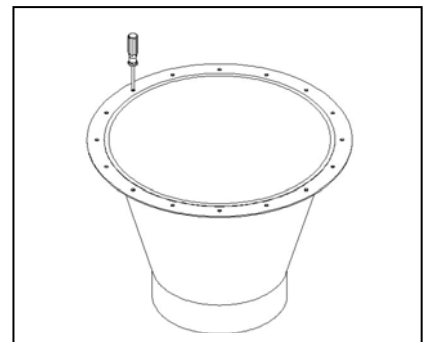
Step 2. Tape the foam on the bottom of the upper collecting drum. (See FIG. 2)



(FIG. 3)



(FIG. 4)



(FIG. 5)

Step 3. Open the package and take out the foam. (See FIG. 3)

Step 4. Stick the foam around the reducing collector flange. (See FIG. 4)

Step 5. Use a screwdriver to make a hole through the foam to make the hex. head bolts go through easily.
(See FIG. 5)

STEP 6-1.

Place the collector housing (A) upside down and tighten the upper support (15) to the collector housing (A) with flange hex head screws (14). Assemble and tighten the lower supports (16) and upper supports with flange hex head screws (14).

STEP 6-2.

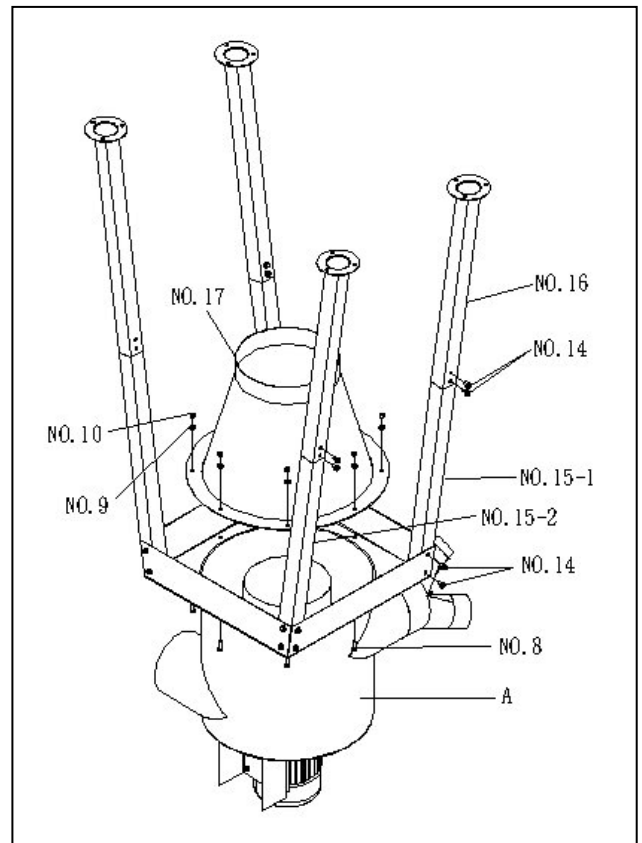
Attach the reducing housing (17) and collector housing together (A) with hex head bolts (8), washer (9) and nuts (10). See (Fig.6)

STEP 6-3.

Turn the dust cyclone right side up.

CAUTION:

This dust cyclone is heavy, please have at least three people wqt nkp together to lift the collector.!!!



(Fig.1)

STEP 7-1

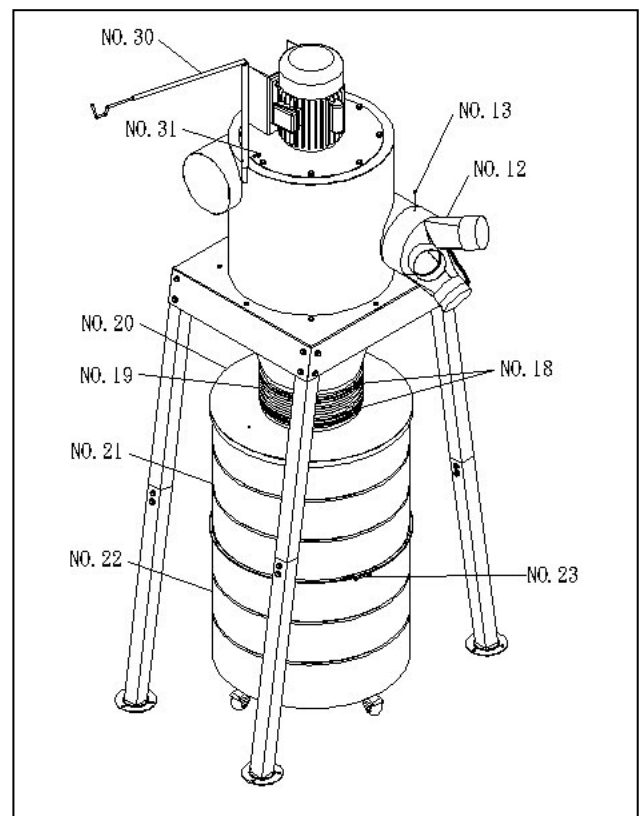
Attach the bag hanger (30) to the collector housing with flange hex head bolts (31).

STEP 7-2.

Place the inlet (12) on the collector housing and tighten with the Phillips head screw (13).

STEP 7-3.

Assemble the upper drum (21) and lower drum (22) together and tighten with drum clamp (23). Place the drum lid on the drum (20). Connect the hose (19) to the drum lid and reducer housing and tighten the hose clamps (18). See (Fig.7)



(Fig.2)

ASSEMBLY (cont.)

STEP 8-1.

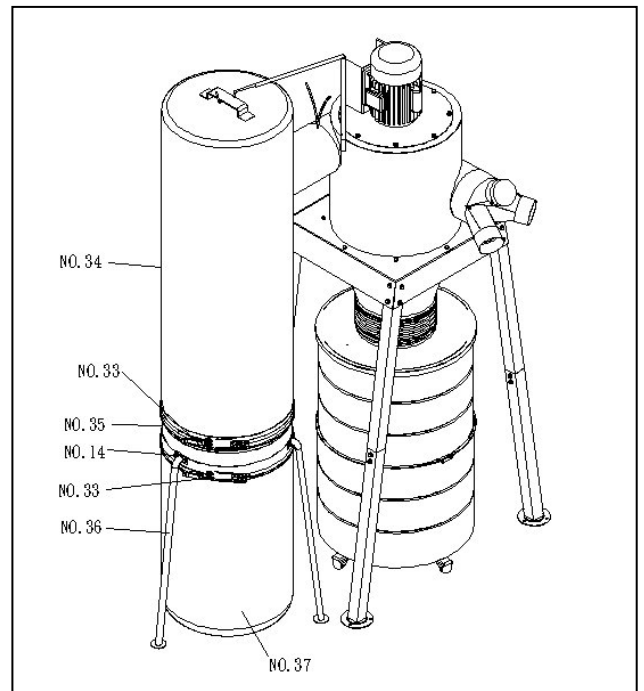
Assemble the housing (35) and housing supports (36) together and tighten with flange hex head bolts (14).

STEP 8-2

Hang the upper bag (34) on the hanger and tighten the bottom of the bag to the housing (35) with clamp (33).

STEP 8-3.

Place the PE bag (37) on the housing and tighten with clamp (33). See (Fig.8)



(Fig.8)

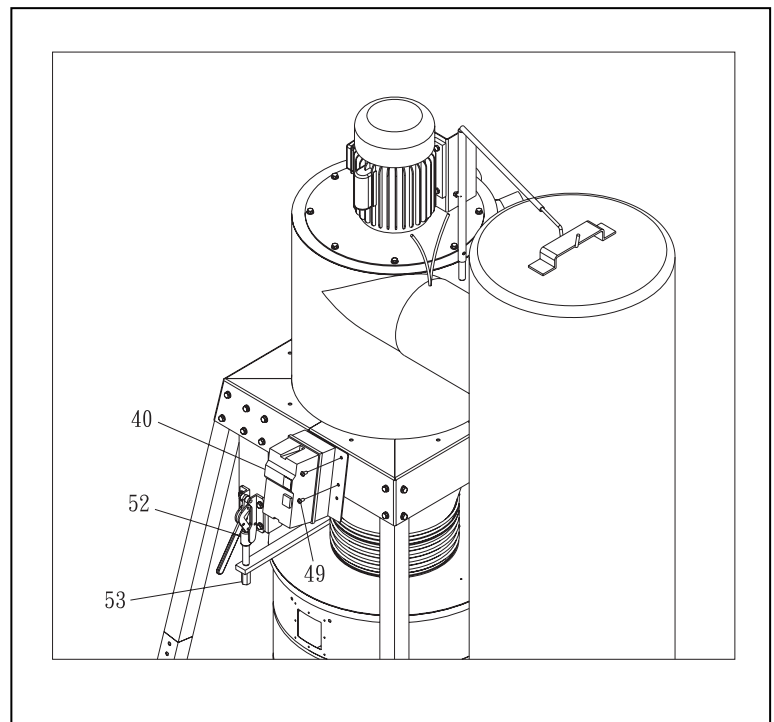
STEP 8-4.

Secure the switch with plate (40) to the stand with round head screws. (49)

STEP 8-5.

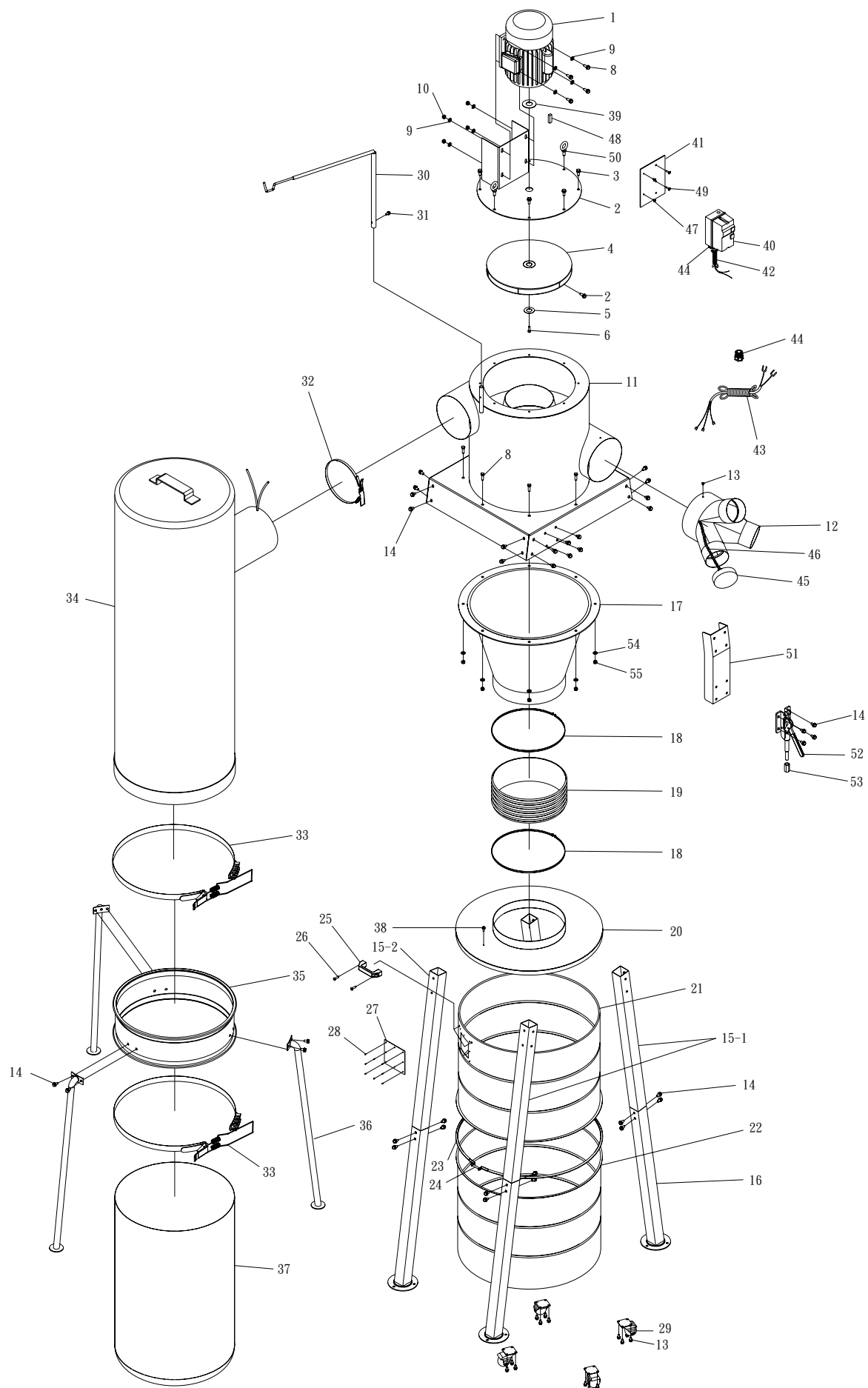
Secure the quick handle support set (52) to the stand with hex head bolts. Then assemble the quick handle spindle into the rod on the drum lid and tighten with the long nut. (58) By adjusting the long nut, you can balance the drum lid. See (FIG. 9)

All the assembly steps are completed.



(FIG. 9)

EXPLODED DIAGRAM----



Part List

NO.	<u>Description</u>	<u>Specification</u>	Q'TY
1	Motor	3HP	1
2	Motor plate		1
3	Flange Hex Head Bolt	5/16"*3/4"	6
4	Impeller	14"	1
5	Impeller Washer		1
6	Set Screw	M6*20	1
7	Hex Head Screw	3/8"*3/4"	1
8	Hex Head Bolt	5/16"*1"	12
9	Washer	5/16"*23	16
10	Nut	5/16"	12
11	Collector Housing		1
12	Inlet	8"*4"	1
13	Flange Phillips Head Screw	3/16"*3/8"	17
14	Flange Hex Head Bolt	5/16"*1/2"	46
15-1	Upper Support (LEFT)		2
15-2	Upper Support(RIGHT)		2
16	Lower Support		4
17	Reducing Housing		1
18	Hose Clamp	12-1/2"	2
19	Hose	12"*120	1
20	Drum Lid		1
21	Upper Drum		1
22	Lower Drum		1
23	Drum clamp		1
24	Phillips Head Screw	1/4"*2-1/2"	1
25	Handle		1
26	Flat Screw	1/4"*5/8"	2
27	PC Board		1
28	Rivet	4-2	8
29	Wheel	2"	4
30	Bag Hanger		1
31	Flange Hex Head Bolt	1/4"*1/2"	1
32	Clamp	8"	1
33	Clamp	101	2

NO.	<u>Description</u>	<u>Specification</u>	Q'TY
34	Upper Bag	500	1
35	Housing	500	1
36	Housing Support		3
37	PE Bag		1
38	Copper Phillips Head Screw	3/16"*3/8"	1
39	Motor Packing	101	1
40	Switch		1
41	Switch Board		1
42	Power Cord		1
43	Motor Cord		1
44	Pushing	PG-16	3
45	Cover		1
46	Chain		1
47	Phillips Head Screw		4
48	Key	7*7*25	1
49	Flange Phillips Head Screw	3/16"*1/2"	2
50	Hanger		2
51	Quick Handle Support		1
52	Quick Handle		1
53	Long Nut	1/2"	1
54	Washer	5/16"*23	8
55	Nut	5/16"	8

Warranty

Oliver makes every effort possible to assure that its equipment meets the highest possible standards of quality and durability. All products sold by Oliver are warranted to the original customer to be free from defects for a period of 2 (two) years on all parts, excluding electronics and motors, which are warranted for 1 year. Oliver's obligation under this warranty shall be exclusively limited to repairing or replacing (at Oliver's option) products which are determined by Oliver to be defective upon delivery F.O.B. (return freight paid by customer) to Oliver, and on inspection by Oliver. This warranty does not apply to defects due, directly or indirectly, to misuse, abuse, negligence, accidents, unauthorized repairs, alterations, lack of maintenance, acts of nature, or items that would normally be consumed or require replacement due to normal wear. In no event shall Oliver be liable for death, personal or property injury, or damages arising from the use of its products.

Warning

Read this manual thoroughly before operating the machine. Oliver Machinery disclaims any liability for machines that have been altered or abused. Oliver Machinery reserves the right to effect at any time, without prior notice, those alterations to parts, fittings, and accessory equipment which they may deem necessary for any reason whatsoever.

For More Information

Oliver Machinery is always adding new Industrial Woodworking products to the line. For complete, up-to-date product information, check with your local Oliver Machinery distributor, or visit www.olivermachinery.net