



7165 Dust Collector

Owner's Manual



CONTENTS

IMPORTANT SAFETY RULES-----	2
IMPORTANT SAFETY RULES FOR DUST COLLECTORS-----	3
GROUNDING INSTRUCTIONS-----	4
SPECIFICATIONS-----	5
UNPACKING CONTENTS-----	6
HARDWARE PACKAGE-----	7
ASSEMBLY INSTRUCTION-----	8
EXPLODED DIAGRAM-----	10
WIRING DIAGRAM-----	11
PARTS LIST-----	12

- **WARNING!**

Please read this manual carefully before assembly, testing and operating.

- **WARNING!**

Do not operate this unit until hose or pipe is installed onto the dust inlet port.

IMPORTANT SAFETY RULES

Wood working can be dangerous if safe and proper operating procedures are not followed. As with all machinery, there are certain hazards involved with the operation of the product. Using the machine with respect and caution will considerably lessen the possibility of personal injury. However, if normal safety precautions are overlooked or ignored, personal injury to the operator may result.

Safety equipment such as guards, push sticks, hold-downs, featherboards, goggles, dust masks and hearing protection can reduce your potential for injury. But even the best guard won't make up for poor judgment, carelessness or inattention. Always use common sense and exercise caution in the workshop. If a procedure feels dangerous, don't try it. Figure out an alternative procedure that feels safer. REMEMBER: Your personal safety is your responsibility.

WARNING: FAILURE TO FOLLOW THESE RULES MAY RESULT IN SERIOUS PERSONAL INJURY

1. **FOR YOUR OWN SAFETY, READ INSTRUCTION MANUAL BEFORE OPERATING THE TOOL.** Learn the tool's application and limitations as well as the specific hazards peculiar to it.
2. **KEEP GUARDS IN PLACE** and in working order
3. **ALWAYS WEAR EYE PROTECTION**
4. **GROUND ALL TOOLS.** If tool is equipped with three-prong plug, it should be plugged into a three-hole electrical receptacle. If an adapter is used to accommodate a two-prong receptacle, the adapter plug must be attached to a known ground. Never remove the third prong.
5. **REMOVE ADJUSTING KEYS AND WRENCHES.** Form habit of checking to see that keys and adjusting wrenches are removed from tool before turning it "ON".
6. **KEEP WORK AREA CLEAN.** Cluttered areas and benches invite accidents.
7. **DON'T USE IN DANGEROUS ENVIRONMENT.** Don't use power tools in damp or wet locations, or expose them to rain. Keep work area well lighted.
8. **KEEP CHILDREN AND VISITORS AWAY.** All children and visitors should be kept a safe distance from work area.
9. **MAKE WORKSHOP CHILDPROOF** – with padlocks, master switches, or by removing starter keys.
10. **DON'T FORCE TOOL.** It will do the job better and be safer at the rate for which it was designed.
11. **USE RIGHT TOOL.** Don't force tool or attachment to do a job for which it was not designed.
12. **WEAR PROPER APPAREL.** No loose clothing, gloves, neck-ties, rings, bracelets, or other jewelry to get caught in moving parts. Non-slip footwear is recommended. Wear protective hair covering to contain long hair.
13. **ALWAYS USE SAFETY GLASSES.** Wear safety glasses. Everyday eyeglasses only have impact resistant lenses; they are not safety glasses. Also use face or dust mask if cutting operation is dusty.
14. **SECURE WORK.** Use clamps or a vise to hold work when practical. It's safer than using your hand and frees both hands to operate tool.
15. **DON'T OVERREACH.** Keep proper footing and balance at all times.
16. **MAINTAIN TOOLS IN TOP CONDITION.** Keep tools sharp and clean for best and safest performance. Follow instructions for lubricating and changing accessories.
17. **DISCONNECT TOOLS** before servicing and when changing accessories such as blades, bits, cutters, etc.
18. **USE RECOMMENDED ACCESSORIES.** The use of accessories and attachments not recommended by us may cause hazards or risk of injury to persons.
19. **REDUCE THE RISK OF UNINTENTIONAL STARTING.** Make sure switch is in "OFF" position before plugging in power cord.
20. **NEVER STAND ON TOOL.** Serious injury could occur if the tool is tipped or if the cutting tool is accidentally contacted.
21. **CHECK DAMAGED PARTS.** Before further use of the tool, a guard or other part that is damaged should be carefully checked to ensure that it will operate properly and perform its intended function – check for alignment of moving parts, binding of moving parts, breakage of parts, mounting, and any other conditions that may affect its operation. A guard or other part that is damaged should be properly repaired or replaced.
22. **DIRECTION OF FEED.** Feed work into a blade or cutter against the direction of rotation of the blade or cutter only.
23. **NEVER LEAVE TOOL RUNNING UNATTENDED. TURN POWER OFF.** Don't leave tool until it comes to a complete stop.
24. **DRUGS, ALCOHOL, MEDICATION.** Do not operate tool while under the influence of drugs, alcohol or any medication.
25. **MAKES SURE TOOL IS DISCONNECTED FROM POWER SUPPLY** while motor is being mounted, connected or reconnected.
26. **WARNING:** The dust generated by certain woods and wood products can be injurious to your health. Always operate machinery in well ventilated areas and provide for proper dust removal. Use wood dust collection systems whenever possible.

IMPORTANT SAFETY RULES FOR DUST COLLECTORS

WARNING: Basic precautions should always be followed when using your dust collector. To reduce the risk of injury, electrical shock or fire, comply with the safety rules listed below:

1. READ and understand the instruction manual before operating the dust collector.
2. DO NOT leave the dust collector plugged into the electrical outlet. Unplug dust collector from outlet when not in use and before servicing, changing bags, unclogging and cleaning.
3. ALWAYS turn the power switch “OFF” before unplugging the dust collector.
4. WARNING: TO REDUCE THE RISK OF ELECTRICAL SHOCK do not use outdoors or on wet surfaces. Use for dry pickup only!
5. FOLLOW all electrical and safety codes, including the National Electric Code (NEC) and the Occupational Safety and Health Regulations (OSHA). All electrical connections and wiring should be made by qualified personnel only.
6. DO NOT use the dust collector to pick up flammable or combustible liquids, such as gasoline. NEVER use the dust collector near any flammable or combustible liquids.
7. USE the dust collector to pick up wood materials only. DO NOT use the dust collector to pick up metal shavings, dust, water, or parts.
8. NEVER use the dust collector to dissipate fumes or smoke. NEVER pick-up anything that is burning or smoking, such as cigarettes, matches or hot ashes.
9. USE only as described in this manual.
10. DO NOT pull the dust collector by the power cord. NEVER allow the power cord to come in contact with sharp edges, hot surfaces, oil or grease.
11. DO NOT unplug the dust collector by pulling on the power cord. ALWAYS grasp the plug, not the cord.
12. DO NOT handle the plug or dust collector with wet hands.
13. REPLACE a damaged cord immediately. DO NOT use a damaged cord or plug. If the dust collector is not operating properly, or has been damaged, left outdoors or has been in contact with water, return it to an Authorized Service Center for service.
14. DO NOT use the dust collector as a toy. DO NOT use near or around children.
15. DO NOT insert fingers or foreign objects into the dust intake ports. Keep hair, loose clothing, fingers, and all body parts away from openings and moving parts of the dust collector.
16. DO NOT use the dust collector without a filter bag and dust collection bag in place and properly secured.
17. DO NOT operate the dust collector with unused dust intake ports uncapped. ALWAYS cover exposed dust intake ports.
18. PERIODICALLY INSPECT dust and filter bags for any cuts, rips or tears. NEVER operate the dust collector with a damaged bag or vacuum hose.
19. The dust collector is designed for home use or light commercial duty ONLY!
20. CONNECT dust collector to a properly grounded outlet only. See Grounding Instructions.

SAVE THESE INSTRUCTIONS

GROUNDING INSTRUCTIONS

The appliance must be grounded, if it should malfunction or breakdown, grounding provides a path of least resistance for electric current to reduce the risk of electric shock. This appliance is equipped with a cord having equipment-ground conductor and grounding plug. The plug must be inserted into an appropriate outlet that is properly installed and grounded in accordance with all local codes and ordinances.

WARNING – Improper connection of the equipment-grounding conductor can result in a risk of electric shock. Check with a qualified electrician or service person if you are in doubt as to whether the outlet is properly grounded. Do not modify the plug provided with the appliance – if it will not fit the outlet; have a proper outlet installed by a qualified electrician.

For grounded, cord-connected appliances:

This appliance is for use on a circuit having a normal rating more than 120 volt and is factory-equipped with a specific electric cord and plug to permit connection to a proper electric circuit. Make sure that the appliance is connected to an outlet having the same configuration as the plug. No adaptor should be used with this appliance. If the appliance must be reconnected for use on a different type of electric circuit, qualified service personnel should make the reconnection.

For a permanently connected appliance:

This appliance must be connected to a grounded metal, permanent wiring system; or an equipment-grounding conductor must be run with the circuit conductors and connected to the equipment grounding terminal or lead on the appliance.

Specifications:

Motor-----5HP // 60Hz / 1 Ph

AMP-----34A

Motor Speed-----3450RPM

Suction Capacity----- 3650 CFM

Static Pressure----- 15.6 Inch H2O

Impeller Size----- 16.2”

Inlet Size----- 10”

Switch----- Magnetic Switch

Overall Dimensions of Base----- 1800 x 1300 x 3000mm

N.W. Box 1----- 112 KGS

Box 2----- 22 KGS

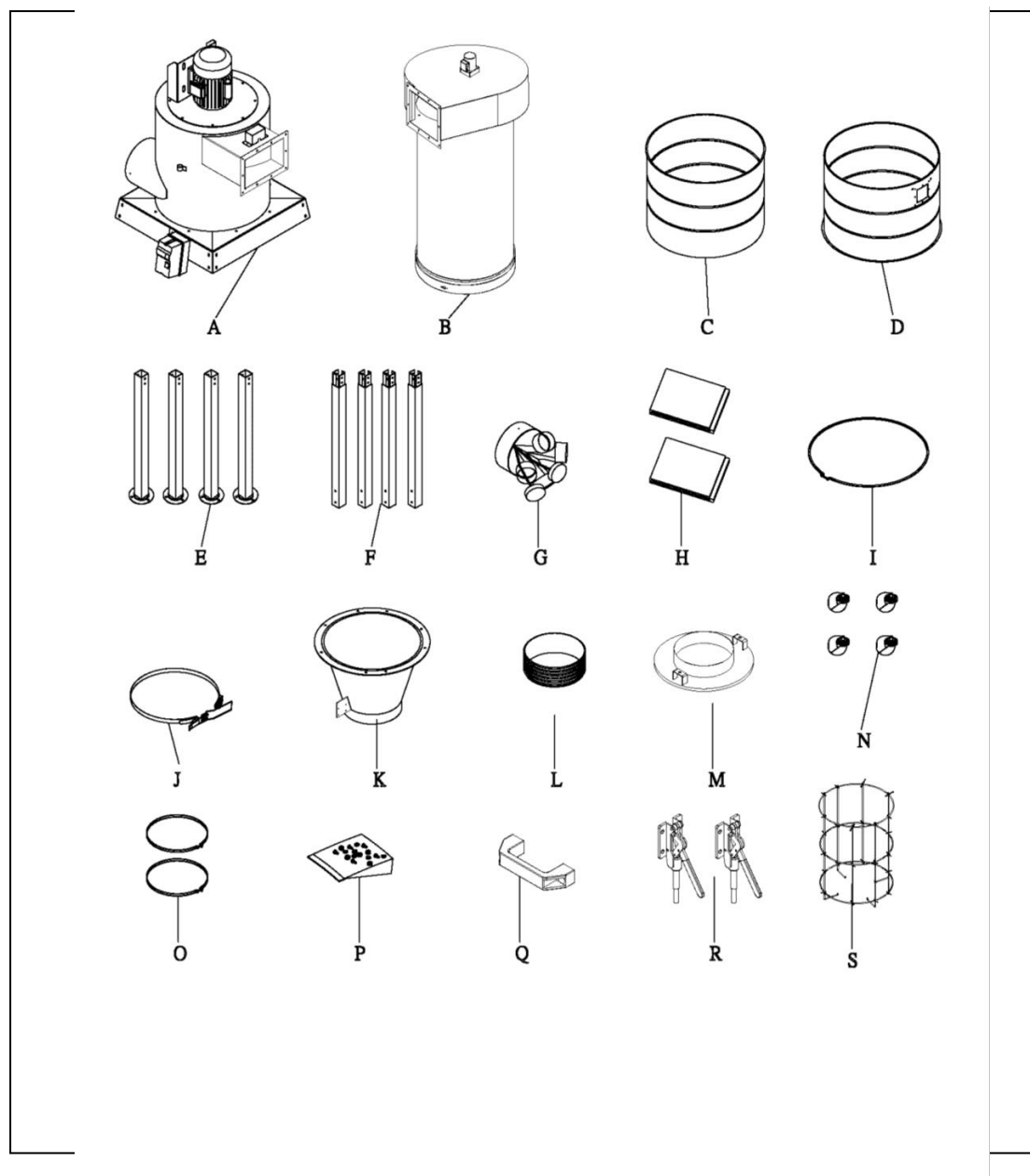
G.W. Box 1----- 137 KGS

Box 2----- 28 KGS

CUFT Box 1----- 38’

Box 2----- 28’

UNPACKING & CHECKING CONTENTS:



A: Main Housing Set

B: Canister Filter Set

C: Lower Collecting Drum

D: Upper Collecting Drum

E: Lower Stand

F: Upper Stand

G: Y-Inlet

H: Polyester Lower Bag

I: Collecting Drum Clamp

J: Bag Clamp

K: Reducing Connector

L: Hose

M: Drum Lid

N: Footpad

O: Hose Clamp

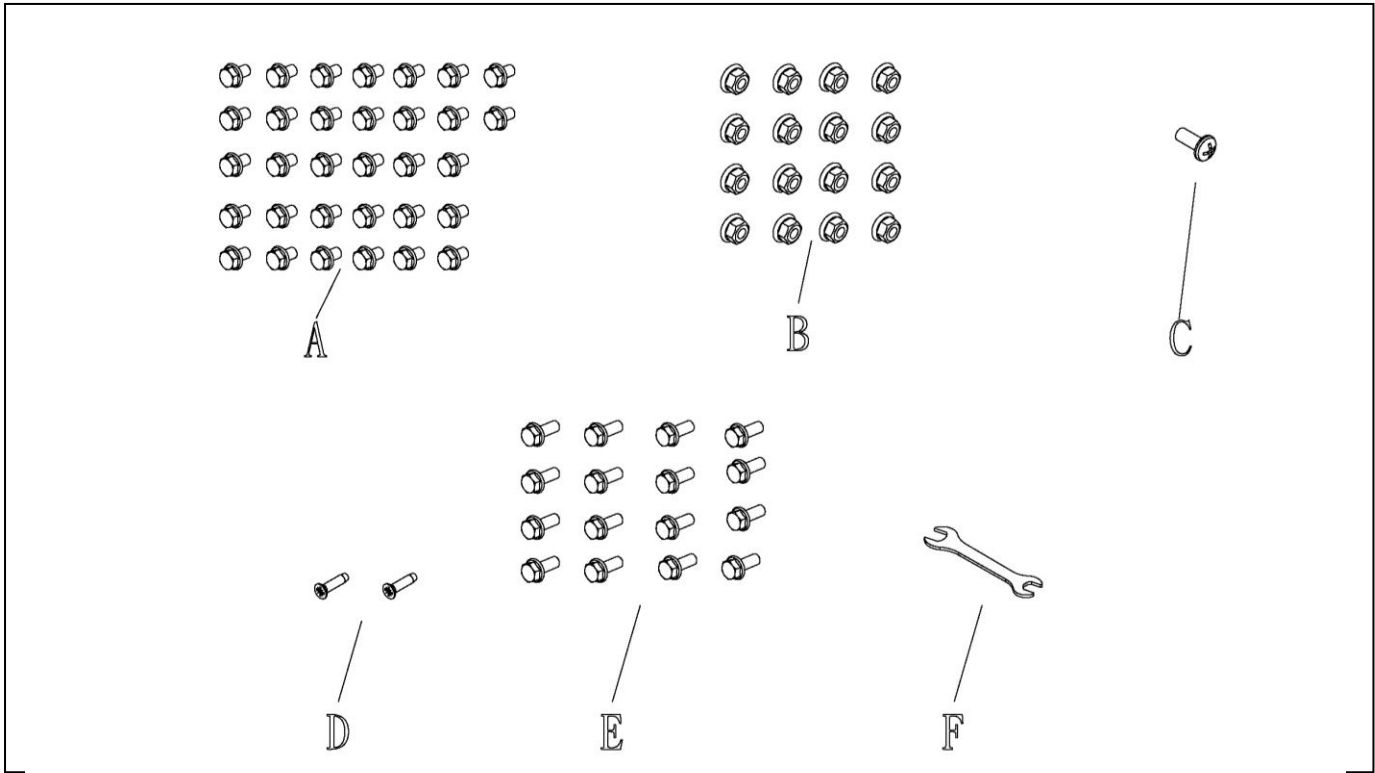
P: Hardware Pack

Q: Handle

R: Quick Lever

S: Inner Frame

Hardware package:



NO.	Description	Specification	Q'TY	Part List No.
A	Flange Bolt	5/16"*1/2"	32	NO.9
B	Nut With Cap	5/16"	16	NO.20
C	Phillips Head Screw	3/16"*3/8"	1	NO.16
D	Flat Screw	1/4"*5/8"	2	NO.31
E	Flange Bolt	5/16"*3/4"	16	NO.48
F	Open Wrench	10*12	1	NO.61

ASSEMBLY INSTRUCTION

STEP1-1.

Place the main housing set (No.13) upside down and tight the reducing connector (NO.19) with flange bolts (NO.48) and lock nut. (No.20)

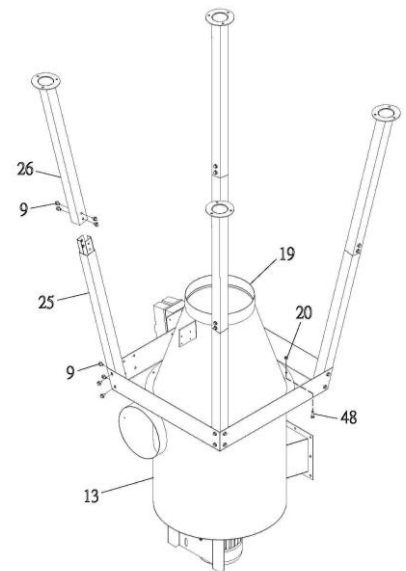
STEP1-2.

Tight the upper support (NO.25) on the bottom of the main housing (No.13) then insert the lower stand (NO.26) on the upper stand tight with flange bolts. (NO.9) Insert the footpads onto the bottom of the lower stands then fix the nuts.

Turn the dust cyclone right side up. See (FIG. 1)

CAUTION:

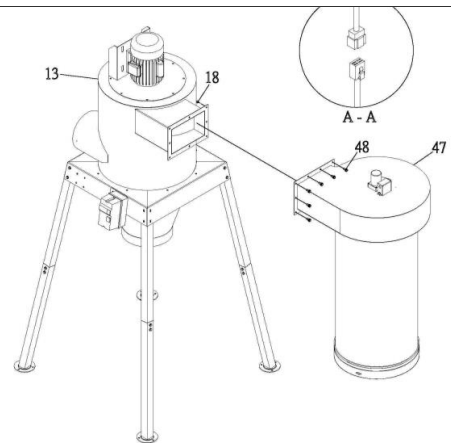
This dust cyclone is heavy, use at least four people!!!



(FIG.1)

STEP2-1

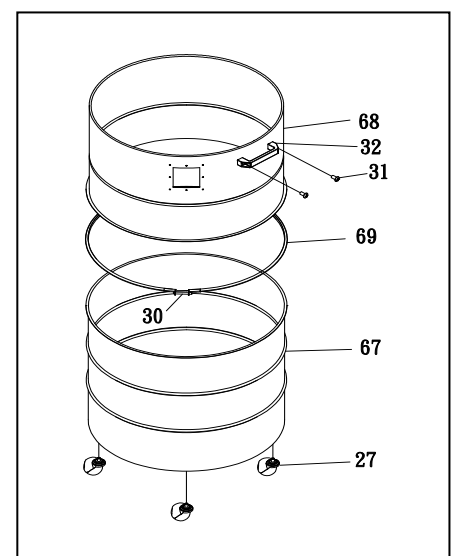
Assemble the canister filter set (NO.47) onto the main housing (no.13) with flange bolts, (No.48) nuts. (No.18) cord of the reducer motors. See (FIG.2)



(FIG.2)

STEP3-1

Assemble the upper drum (NO.68) and lower drum (NO.67) together and tight with drum clamp. (NO.69) Tight the handle (No.32) on the drum with round head screws. (No.31) Tight the wheels (No.27) on the bottom of the lower drum. See (Fig.3)



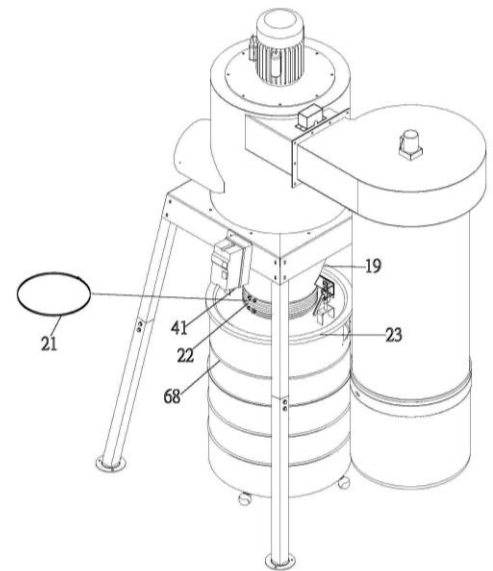
(Fig.3)

STEP4-1

Place the hose (NO.22) and put the hose clamps (NO.21) on the both sides then hook onto the reducing connector (No.19) and drum lid (No.23) then cover on the drum.

STEP4-2

Tight the holder (NO.39) at the side of the main housing with flange bolts (No.9) then tight the quick lever on. Insert the quick lever spindle through the drum lid bar then tight with nut. (No.41) Adjust the drum lid level by tight or loose the nut. See (FIG.4)

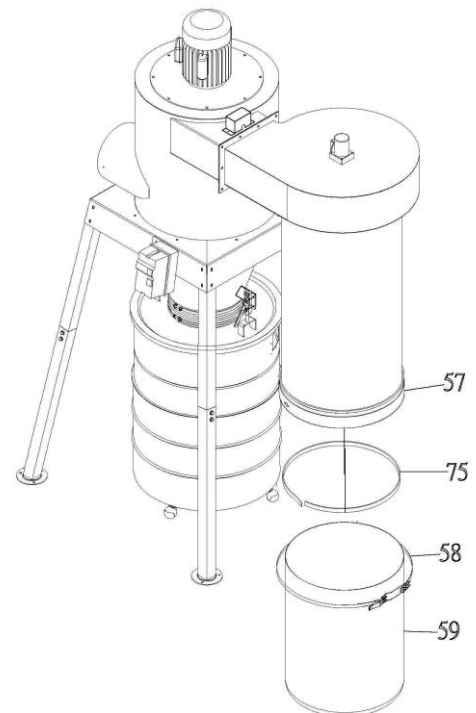


(FIG.4)

STEP5-1.

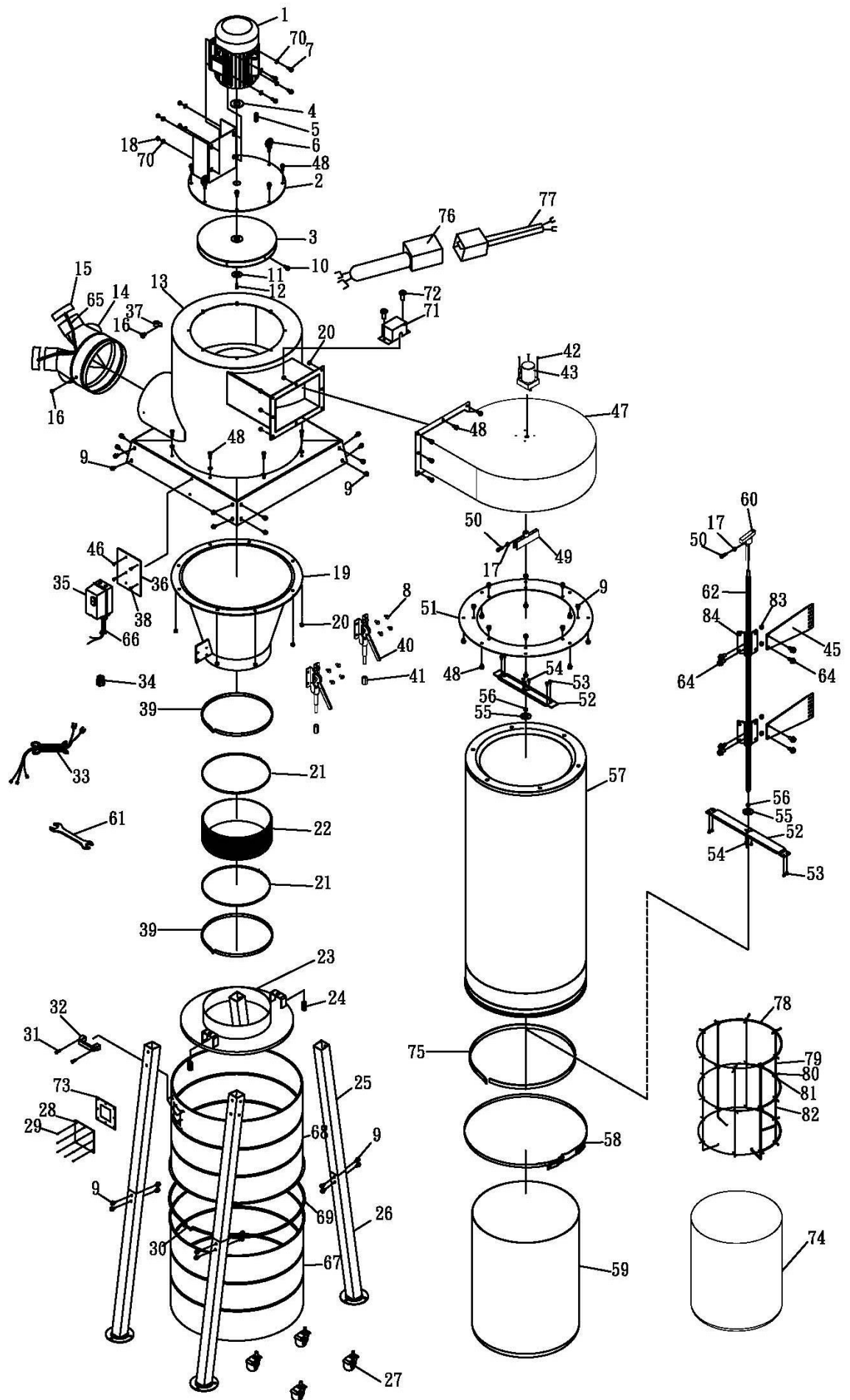
Place the polyester bags (NO.59) on the bottom of the canister filters (No.57) and tight with bag clamps. See (FIG.5)

All the assemble steps are completed.



(FIG.5)

EXPLODED DIAGRAM:



Part List

NO.	Description	Specification	Q'TY
1	Motor	5HP	1
2	Motor Plate		1
3	Impeller	16.2"	1
4	Motor Packing	203F	1
5	Key	8*8*50	1
6	Hanger	5/16"	2
7	Hex Head Bolt	3/8"*1-1/4"	4
8	Phillips Head Screw	M5*8	8
9	Flange Bolt	5/16"*1/2"	38
10	Hex Head Bolt	3/8"*3/4"	1
11	Impeller Washer		1
12	Cap Screw	M6*20	1
13	Main Housing		1
14	Inlet	10"*4"	1
15	Cap	4"	3
16	Phillip Head Screw	3/16"*3/8"	2
17	Nut	M5	2
18	Nut	3/8"	4
19	Reducing Housing		1
20	Nut With Cap	5/16"	16
21	Hose Clamp	12-1/2"	2
22	Hose	Ø12"*120	1
23	Drum Lid		1
24	Long Nut	3/8"	2
25	Upper Stand		4
26	Lower Stand		4
27	Wheel	2"	4
28	PC Board		1
29	Rivet	4-2	8
30	Round Head Screw	1/4"*2-1/2"	1
31	Flat Head Screw	1/4"*5/8"	2
32	Handle		1
33	Motor Cord		1
34	Bushing	MP-25	3
35	Switch		1
36	Switch Plate		1
37	Clip		1
38	Phillip Head Screw	3/16"*1/2"	2
39	Foam		2
40	Quick Lever		2
41	Nut	3/8"	2
42	Cap Screw	M5*80	4
43	Reducer		1
45	Flapper		4
46	Set Screw	1/4"*1/2"	2

47	Canister Housing		1
48	Hex Head Bolt	5/16"×3/4"	30
49	Rod Kit		1
50	Set Screw	M5*12	2
51	Canister Fixing board		1
52	Lower Fixing Board		2
53	Phillip Head Screw	M5*10	8
54	Button Head Screw	M5*6	6
55	Ball bear Fixing Plate (Thread)		2
56	Ball Bearing	1206	2
57	Canister	Ø600*1000	1
58	Clamp	600CK	1
59	Polyester bag		1
60	Rod		1
61	Open Wrench	10*12	1
62	Spindle		1
64	Flange Bolts	M5*10	8
65	Chain		3
66	Power Cord		1
67	Lower Collecting Drum		1
68	Upper Collecting Drum		1
69	Drum Clamp		1
70	Washer	3/8"×23	8
71	Anti-Fire Box		1
72	Phillips Head Screw	3/16"×3/4"	2
73	Rubber Pad		1
74	PE Bag		1
75	Foam	10m*30*1900	1
76	Connecting wiring(long)		1
77	Connecting wiring(short)		1
78	Loop		3
79	Barrel Fixing Stick (Long)		4
80	Phillips Head Screw	M3*12	24
81	Nut	M3	24
82	Barrel Fixing Stick (Short)		4
83	Nut	M5	4
84	Plate Fixing Block		2