



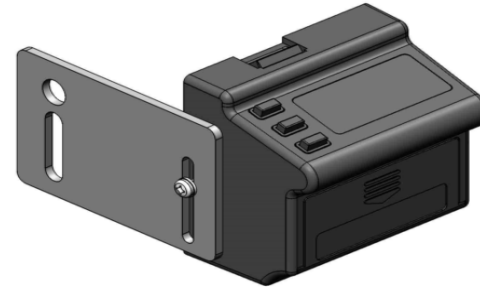
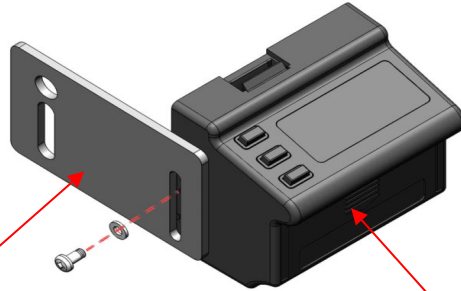
**A TRADITION  
OF INNOVATION**

**RETRO FIT INSTRUCTIONS FOR WIXEY DRO OLIVER  
MODEL 4430.201**

Model 4430.201

Note: You may be able to use pieces that are already installed with the original DRO.

Step 1: Remove the screw from DRO, and fix the upper plate on the DRO as shown below.

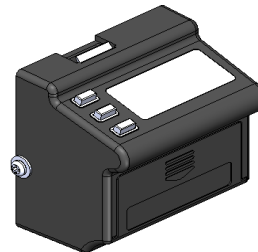


Wixey WR510S\*1pc

174977-904 Upper positioning plate\*1pc

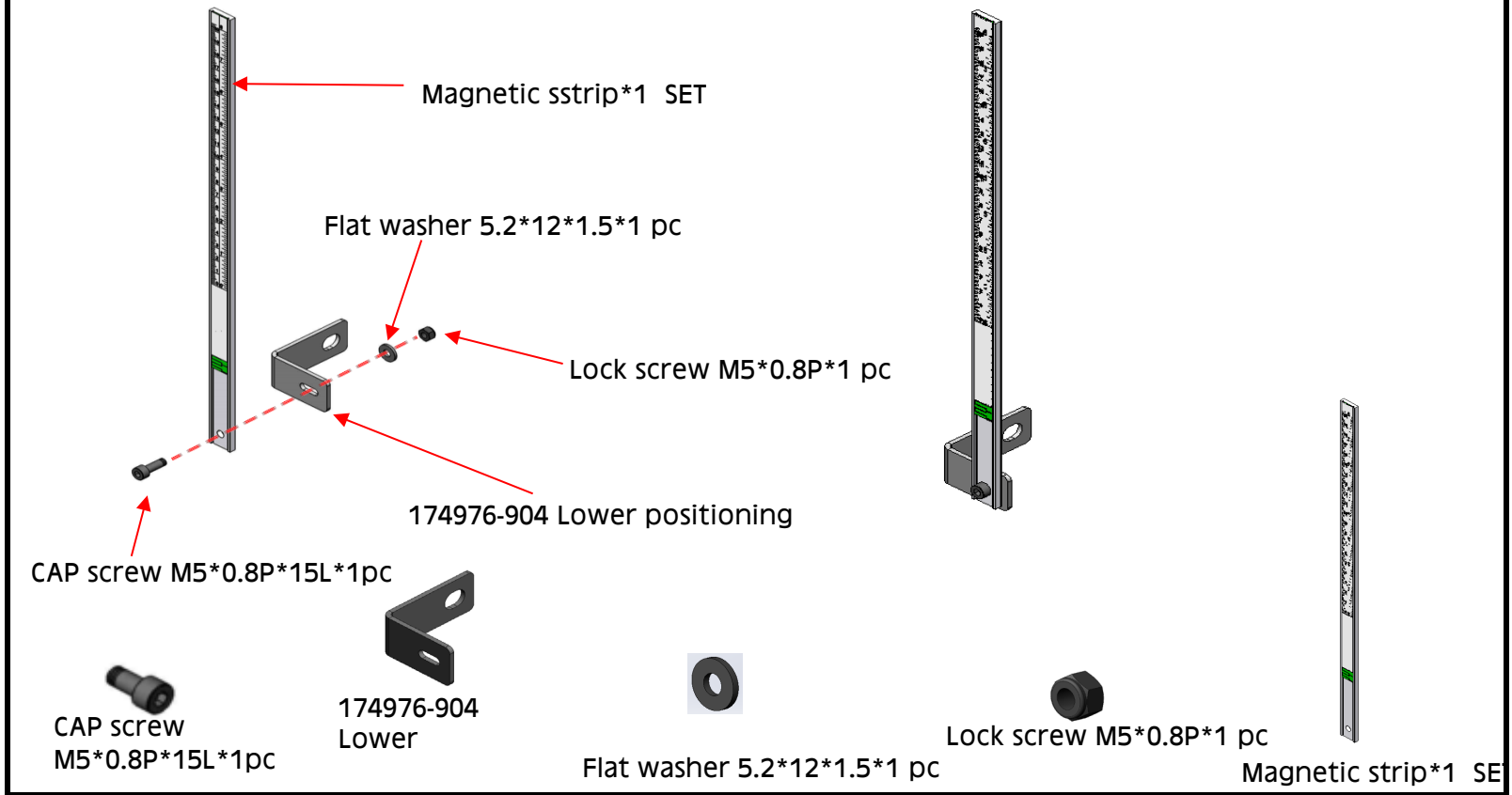


174977-904 Upper positioning plate\*1pcs

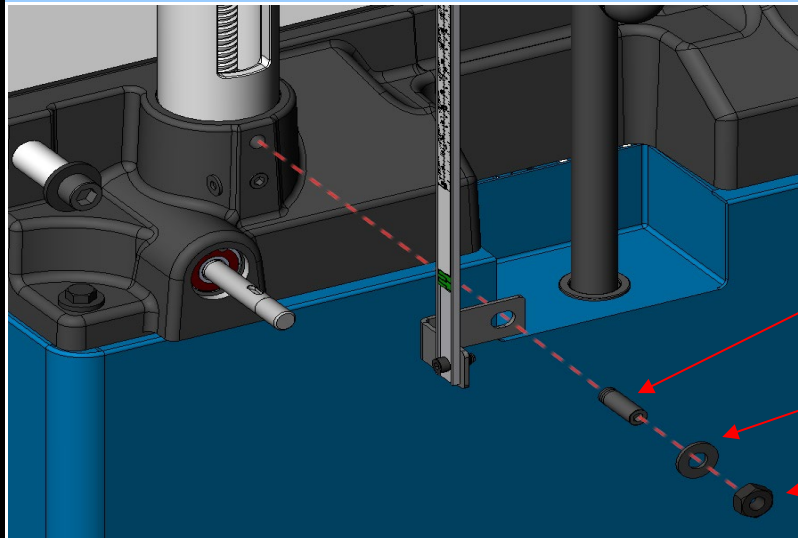


Wixey WR510S\*1pcs

Step 2: Use a 4mm hex wrench and attach the magnetic strip, lock screw, flat washer and CAP screw on the bracket in the order as below.



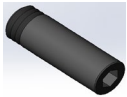
**Step 3: Use 5mm hex wrench to lock the assembly from step 2 on the machine as below.**



Set screw M10\*1.5P\*30L\*1pc

Flat washer 10.3\*22\*2.0t\*1 pc

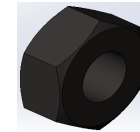
Hex nut M10\*1.5P(17B\*8H)\*1 pc



Set screw  
M10\*1.5P\*30L\*1pc

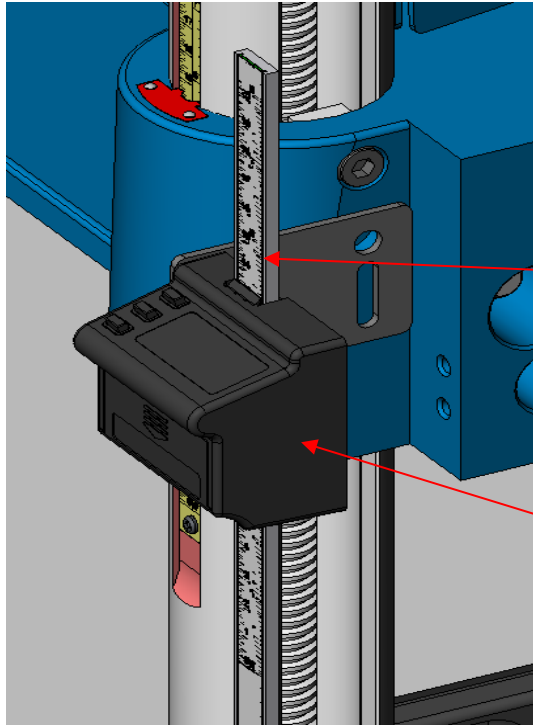


Flat washer 10.3\*22\*2.0t\*1 pc



Hex nut M10\*1.5P(17B\*8H)\*1 pc

Step 4: Slide the DRO onto the magnetic strip

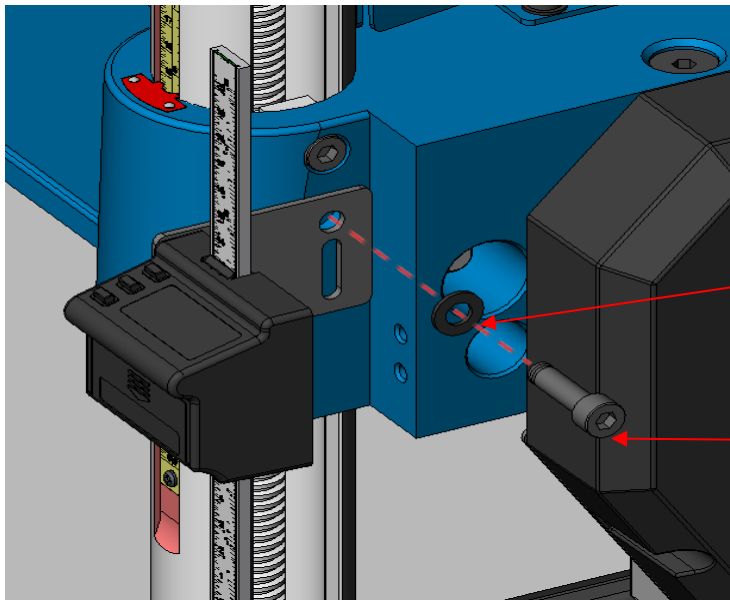


Magnetic strip\*1 SET

DRO (Wixey WR510S)\*1pcs

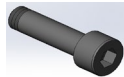
Model 4430.201

Step 5: Use a 5mm hex wrench to fix the upper position plate on the machine as shown below



Flat washer 8.5\*16\*1.5t \*1 pc

CAP M8\*1.25P\*30L\*1pc

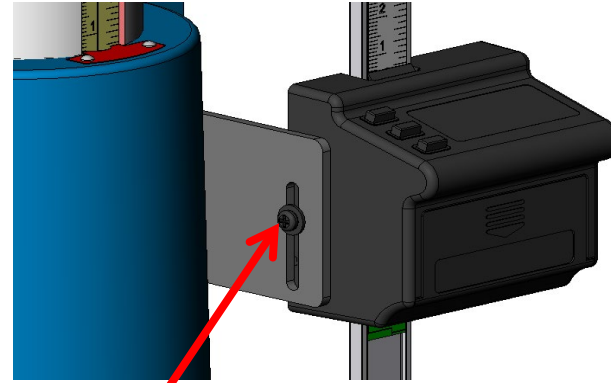
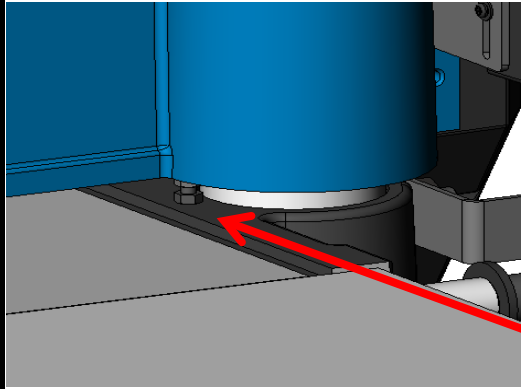


CAP screw M8\*1.25P\*30L\*1pc

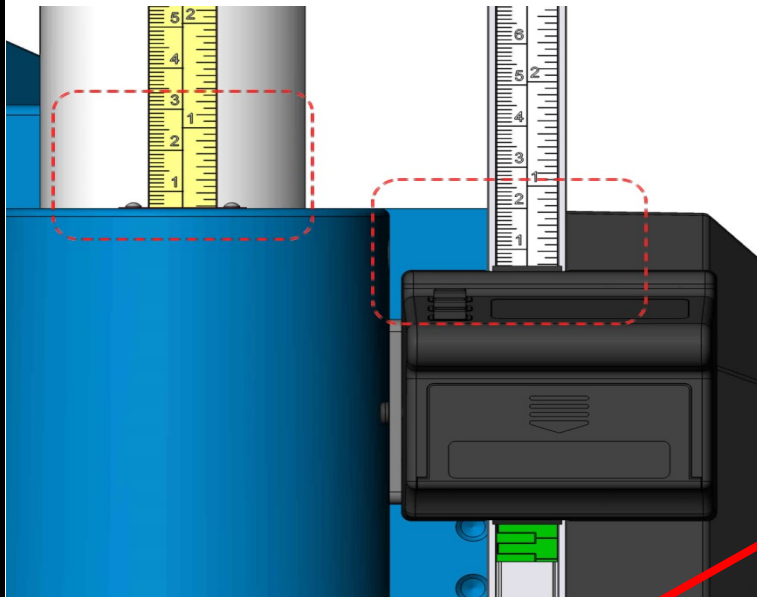


Flat washer 8.5\*16\*1.5t \*1 pc

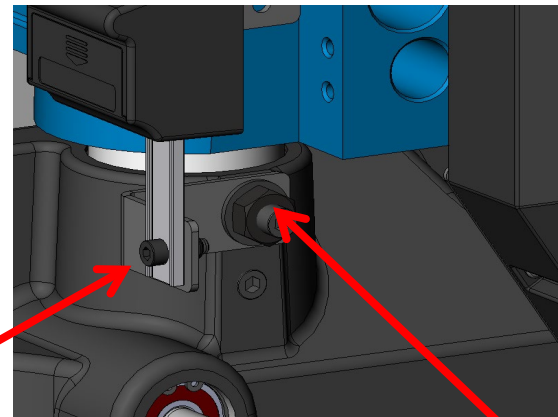
**Step 6: lower the head down to its lowest point (6mm), and adjust the DRO to correspond with 6mm on the scale by adjusting the screw. When the DRO shows zero (As the scale), tighten the screw.**



Adjusting DRO up/down



Adjusting magnetic strip



Adjusting magnetic strip

To calibrate cutterhead arc to table, see instructions #CALWR510S.