



# 10063.0001 Drill Press

## Owner's Manual





# SAFETY INSTRUCTION READ BEFORE OPERATION

To help ensure safe operation, please take a moment to learn the machine's applications and limitations, as well as potential hazards. Oliver Machinery disclaims any real or implied warranty and holds itself harmless for any injury that may result from the improper use of its equipment.

1. Do not operate the drill press when tired, distracted, or under the effects of drugs, alcohol or any medication that impairs reflexes or alertness.
2. The working area should be well lit, clean and free of debris.
3. Keep children and visitors at a safe distance when the drill press is in operation; do not permit them to operate the drill press.
4. Childproof and tamper proof your shop and all-machinery with locks, master electrical switches and switch keys, to prevent unauthorized or unsupervised use.
5. Stay alert! Give your work your undivided attention. Even a momentary distraction can lead to serious injury.
6. Fine particulate dust is a carcinogen that can be hazardous to health. Work in a well-ventilated area and whenever possible use a dust collector and wear eye, ear and respiratory protection devices.
7. Do not wear loose clothing, gloves, bracelets, necklaces or other jewelry while the drill press is in operation.
8. Be sure that adjusting wrenches, tools, drinks and other clutter are removed from the machine and/or the table surface before operating.
9. Keep hands well away from the drill bit and all moving parts. Use a hold-down or clamp to secure the stock, and use a brush, not hands, to clear away chips and dust.
10. Be sure that the drill bit is securely installed in the chuck before operation.
11. Be sure the drill bit has gained full operating speed before beginning to drill.
12. Always use a clean, properly sharpened bit. Dirty or dull bits are unsafe and can lead to accidents.
13. Use suitable work piece support if the work piece does not have a flat surface.
14. Do not push or force the bit into the stock. The drill will perform better and more safely when working at the rate feed for which it was designed.

## SAFETY INSTRUCTION CONTINUED

15. Avoid working from awkward or off-balance positions. Do not overreach and keep both feet on floor.
16. Keep guards in place and in working order. If a guard must be removed for maintenance or cleaning be sure it is properly re-attached before using the tool again.
17. Never leave the machine unattended while it is running or with the power on.
18. Use of parts and accessories NOT recommended by Oliver Machinery may result in equipment malfunction or risk of injury.
19. Never stand on machinery. Serious injury could result if the tool is tipped over or if the drill bit is unintentionally contacted.
20. Always disconnect the tool from the power source before servicing or changing accessories such as bits, or before performing any maintenance, cleaning, or if the machine will be left unattended.
21. Make sure that the switch is in the "OFF" position before plugging in the power cord.
22. Make sure the tool is properly grounded. If equipped with a 3-prong plug, it should be used with a three-pole receptacle. Never remove the third prong.
23. Do not use this drill press for other than its intended use. If used for other purposes, Oliver Machinery disclaims any real implied warranty and holds itself harmless for any injury, which may result from that use.

### Prop 65 Notice:

WARNING: Some dust created by power sanding, sawing, grinding, drilling, and other construction activities contains chemicals known to the State of California to cause cancer and birth defects or other reproductive harm. Some examples of these chemicals are:

- lead from lead-based paints,
- crystalline silica from bricks and cement and other masonry products, and
- arsenic and chromium from chemically treated lumber.

Your risk from exposure to these chemicals varies, depending on how often you do this type of work. To reduce your exposure, work in a well-ventilated area and with approved safety equipment, such as dust masks that are specially designed to filter out microscopic particles. For more information go to [www.P65Warnings.ca.gov](http://www.P65Warnings.ca.gov).

## **ELECTRICAL RERQUIREMENTS**

**BEFORE CONNECTING THE MACHINE TO THE POWER SOURCE, VERIFY THAT THE VOLTAGE OF YOUR POWER SUPPLY CORRESPONDS WITH THE VOLTAGE SPECIFIED ON THE MOTOR I.D. NAMEPLATE.**

**A POWER SOURCE WITH GREATER VOLTAGE THAN NEEDED CAN RESULT IN SERIOUS INJURY TO THE USER AS WELL AS DAMAGE TO THE MACHINE. IF IN DOUBT, CONTACT A QUALIFIED ELECTRICIAN BEFORE CONNECTING TO THE POWER SOURCE.**

**THIS TOOL IS FOR INDOOR USE ONLY. DO NOT EXPOSE TO RAIN OR USE IN WET OR DAMP LOCATIONS.**

## **GROUNDING INSTRUCTIONS**

In the event of an electrical malfunction or short circuit, grounding reduces the risk of electric shock. The motor of this machine is wired for 115 Volt Single Phase operation ONLY and is equipped with a 3-conductor cord and a 3-prong grounding plug to fit a grounded type receptacle

Do not remove the 3rd prong (grounding pin) to make it fit into an old 2-hole wall socket or extension cord. If an adaptor plug is used it must be attached to the metal screw of the receptacle

The use of an adaptor plug may be illegal in some areas. Check your local codes. If you have any doubts or if the supplied plug does not correspond to your electrical outlet, consult a qualified electrician before proceeding.

## **CIRCUIT CAPACITY**

Make sure that the wires in your circuit are capable of handling the amperage draw from your machine, as well as any other machines that could be operating on the same circuit. If you are unsure, consult a qualified electrician.

If the circuit breaker trips or the fuse blows regularly, your machine may be operating on a circuit that is close to its amperage draw capacity. However, if an unusual amperage draw does not exist and a power failure still occurs, contact a qualified technician or our service department.

## **EXTENSION CORDS**

Oliver Machinery does not recommend the use of an extension cord with your machine. However, if you must use an extension cord, make sure it has an amperage suitable for the rating on the motor ID nameplate. An undersized cord will cause a drop-in line voltage resulting in loss of power and overheating.

Any extension cord used must feature a 3-prong grounding plug as described under grounding instructions. Follow the rules listed.

# Oliver Machinery Model 10063.001

## Assembly Instructions

- Review the parts breakdown and keep it for reference when putting your drill press together. The assembly steps will reference the item numbers from the parts list.
- Remove all parts from the packaging, but do not dispose of until you are finished.
- Lay out the parts in an unobstructed area, some pieces such as the head will need two people to safely move.
- All components of the 10063.001 are heavy and require two or more people to assemble.
- If you have any questions during assembly, please contact Oliver Machinery at 800-559-5065 or email at [info@olivermachinery.net](mailto:info@olivermachinery.net).

## Assembling the Drill Press

1. Bolt the **COLUMN PEDESTAL (99)** and **COLUMN (80)** to the **BASE (100)** using three **BOLTS (97)** and **WASHERS (98)**.
2. Remove the **RACK COLLAR (78)** from the **COLUMN (80)** by loosening the **SCREW (78)** and carefully sliding the collar preventing any binding. Set the **RACK (77)** to the side.
3. Locate the **TABLE BRACKET (81)** and **TABLE (91)** making sure the **WORM GEAR (88)** and **HELICAL GEAR (89)** are in their proper location.
4. Place the **RACK (77)** into the table bracket. The tapered end of the rack faces upward, and the squared end faces down.
5. Slide both pieces onto the **COLUMN (80)**. Take care to hold in position as it is a tight fit.
6. Fit the squared end of the rack in the **COLUMN PLATE (110)** of the **RACK SEAT (111)**. Secure the top of the rack by installing the rack collar. Do not bind the rack or over tighten the set screw.
7. Slide the **TABLE CRANK HANDLE (86)** on to the worm gear shaft aligning the set screw with the flat surface and tighten.
8. Using at least two people, lower the **HEAD (109)** on the column and secure in alignment with the base using the two **SET SCREWS (60)**. Use hex wrench supplied.
9. Tighten the three **FEED HANDLES (65)** into the **FEED PINION SHAFT (64)**.
10. Remove the **SCREW (4)** from the **PULLEY COVER (3)** and reverse it through the hole. Tighten **KNOB (5)** on to the screw.
11. Keep the **DRIFT KEY (74)** and hex wrenches for future use.
12. Remove the protective coating from all surfaces using a rag and environmentally safe cleaner. Do not use any chemical that may damage the painted surfaces.

## Installing the Drill Chuck Guard

1. Locate the **CHUCK GUARD (116)** and **GUARD SHAFT (117)**.
2. Assemble the **CONNECT BAR (118)** to the guard shaft with **NUT (120)** and **SPRING WASHER (119)** and tighten.
3. Remove the **SNAP RING (132)** from the **FIXED SEAT CONNECT BAR (121)**.
4. Slide the fixed seat connect bar through the **FIXED SEAT (122)** and reinstall the snap ring. Be sure to position the flat surface of the fixed seat connect bar facing to the rear of the machine. This will activate the safety switch allowing the drill press to operate.
5. Slide the connect bar, chuck guard, and guard shaft assembly onto the **FIXED SEAT CONNECT BAR (121)** and secure with **NUT (120)** and **SPRING WASHER (119)** and tighten.
6. The **SET SCREW (123)** will hold the drill chuck guard at the desired height. Do not over tighten.
7. **NOTE:** The drill chuck guard must be installed, or the machine will not operate. This is a safety feature and is electrically monitored.

## Installing the Drill Chuck

1. Remove the protective coating from the **ARBOR (75)**, **DRILL CHUCK (76)** internal tapered surface, and **SPINDLE (73)** internal tapered surface. It is extremely important these are clean.
2. Place the drill chuck on the short-tapered end of the arbor.
3. Insert the arbor into the spindle and twist until the flat portion mates with the spindle.
4. Adjust the drill chuck so all fingers are recessed into the body.
5. Place a block of wood on the table and using the feed handles, apply pressure to secure the drill chuck in place.
6. To remove the drill chuck, lower the spindle to the full depth, rotate the drill chuck until arbor can be seen, and place the **DRIFT KEY (74)** through the hole. Give a slight tap with a mallet and the drill chuck and arbor will drop out. Be sure to catch the drill chuck to prevent damage. It is much easier to do this with two people.

# Drill Press Use Instructions

## Drilling Guidelines

- Always wear safety glasses.
- Use clean and sharp drill bits intended for a power drill.
- Clamp the workpiece securely. Never hold it by hand.
- Make sure to use the recommended speed for the drill size and workpiece material.

## Adjusting the Table Height

1. Loosen the **LOCK HANDLE (82)** and **LOCK HANDLE (87)**.
2. Rotate the **TABLE CRANK HANDLE (86)** to raise or lower.
3. Tighten both lock handles at the desired position.

## Table Swing Position

1. Loosen the **LOCK HANDLE (82)** and **LOCK HANDLE (87)**.
2. Swing **TABLE (91)** to the desired position.
3. Tighten the **LOCK HANDLE (82)** and **LOCK HANDLE (87)**.
4. For large pieces the **BASE (100)** can be used as the table.

## Changing Speeds

1. Always disconnect the drill press from the power source before changing speeds.
2. Raise the **PULLEY COVER (3)**.
3. Refer to the speed chart for the desired speed and belt arrangement.
4. Loosen the **THUMB SCREWS (45)** on each side of the head and release the belt tension.
5. Relocate the belts to the desired speed arrangement.
6. Push the **MOTOR (54)** away from the head using the **ADJUSTMENT LEVER (49)** to tension the belts.
7. Tighten the thumb screws to hold the belt tension.
8. Proper tension is less than ½" deflection when squeezing the belt together.



## Table Tilt Adjustment

1. Loosen both **HEX NUTS (92)**.
2. Remove the lower bolt.
3. Tilt the table to the desired position.
4. Tight both hex bolts, do not replace the lower bolt.
5. When moving back to the normal drilling position, replace the lower bolt and tighten both hex nuts.

## Depth Stop Adjustment

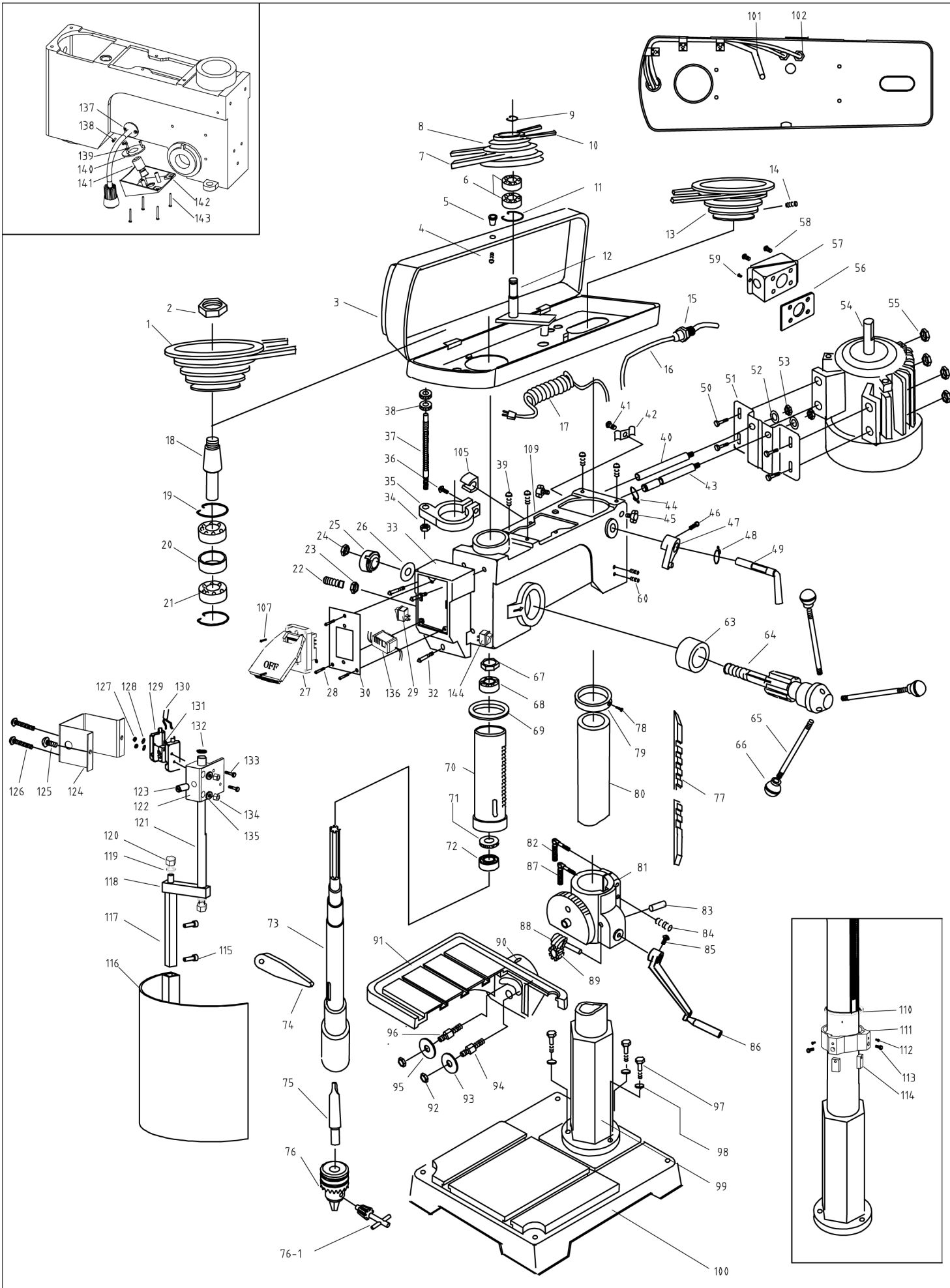
1. Set the bottom **DEPTH STOP LOCK NUT (38)** to the desired depth setting.
2. Tighten the second lock nut against the first nut to secure it in position.

## Laser Adjustment

1. Using a small bit (1/16" or less) drill a hole in a scrap piece of wood the same thickness as your workpiece.
2. Turn on the laser and move the light so both cross hairs intersect the hole.
3. The laser is now adjusted for operation.
4. If you change the table height or thickness of your workpiece, start with step 1 and adjust for your next set of holes.



10063.001



**PART LIST FOR 10063.001**

<b>NO.</b>	<b>PART NO.</b>	<b>DESCRIPTION</b>	<b>QTY</b>
1	10063-1	SPINDLE PULLEY	1
2	10063-2	NUT	1
3	10063-3	PULLEY COVER	1
4	10063-4	SCREW	1
5	10063-5	KNOB	1
6	BB-6203ZZ	6203ZZ BALL BEARING	2
7	10063-7	A-40 V-BELT	1
8	10063-8	IDLER PULLEY	1
9	10063-9	RETAINING RING	1
10	10063-10	A-25 V-BELT	1
11	10063-11	RETAINING RING	1
12	10063-12	PULLEY SHAFT ASSEMBLY	1
13	10063-13	MOTOR PULLEY	1
14	10063-14	SET SCREW	1
15	10063-15	STRAIN RELEF	1
16	10063-16	SWITCH TO MOTOR CORD	1
17	10063-17	POWER CORD WITH MOLDED PLUG	1
18	10063-18	SPINDLE PULLEY INSERT	1
19	10063-19	RETAINING RING	2
20	10063-20	BEARING SPACER	1
21	BB-6007ZZ	6007ZZ BALL BEARING	2
22	10063-22	SCREW	1
23	10063-23	HEX NUT	1
24	10063-24	HEX NUT	1
25	10063-25	RETURN SPRING AND CAP	1
26	10063-26	WASHER	1
27	10063-27	ON/OFF SWITCH ASSEMBLY	1
28	10063-28	SCREW	3
29	10063-29	LIGHT SWITCH	1
30	10063-30	SWITCH BACK PLATE	1
32	10063-32	SCREW	3
33	10063-33	SWITCH BOX	1
34	10063-34	NUT	1
35	10063-35	DEPTH STOP BRACKET	1
36	10063-36	BOLT	1
37	10063-37	DEPTH STOP ROD	1
38	10063-38	DEPTH STOP LOCK NUT	2
39	10063-39	SCREW	4
40	10063-40	LH MOTOR BRACKET ROD	1
41	10063-41	SCREW	1
42	10063-42	CORD CLAMP	1
43	10063-43	RH MOTOR BRACKET ROD	1

**PART LIST FOR 10063.001**

<b>NO.</b>	<b>PART NO.</b>	<b>DESCRIPTION</b>	<b>QTY</b>
44	10063-44	RETAINING RING	1
45	10063-45	WING SCREW	2
46	10063-46	SCREW	1
47	10063-47	ADJUSTMENT CAM	1
48	10063-48	RETAINING RING	1
49	10063-49	ADJUSTMENT LEVER	1
50	10063-50	HEX HEAD BOLT	4
51	10063-51	MOTOR PLATE	1
52	10063-52	SPRING WASHER	2
53	10063-53	HEX NUT	2
54	10063-54	1.5 HP MOTOR 1PH 115V	1
55	10063-55	HEX NUT	4
56	10063-56	RUBBER GASKET	1
57	10063-57	JUNCTION BOX	1
58	10063-58	SCREW	4
59	10063-59	SCREW	1
60	10063-60	SET SCREW	2
63	10063-63	SPACER	1
64	10063-64	PINION SHAFT	1
65	10063-65	FEED HANDLE	3
66	10063-66	HANDLE KNOB	3
67	10063-67	SPINDLE NUT	1
68	BB-6005ZZ	6005ZZ BALL BEARING	1
69	10063-69	QUILL BUMPER	1
70	10063-70	QUILL	1
71	TB-51107	51107 THRUST BEARING	1
72	BB-6007ZZ	6007ZZ BALL BEARING	1
73	10063-73	SPINDLE MT-3	1
74	10063-74	DRIFT KEY	1
75	10063-75	ARBOR MT-3 / JT-3	1
76	10063-76	3/4 DRILL CHUCK w/KEY	1
76-1	10063-76-1	KEY ONLY	1
77	10063-77	RACK	1
78	10063-78	SCREW	1
79	10063-79	RACK COLLAR	1
80	10063-80.	COLUMN	1
81	10063-81	TABLE RACKET	1
81-1	10063-81-1	TILT SCALE ONLY (decal)	1
82	10063-82	LOCK HANDLE	1
83	10063-83	GEAR SHAFT	1
84	10063-84	SET SCREW	3
85	10063-85	HEX HEAD SCREW	1

**PART LIST FOR 10063.001**

<b>NO.</b>	<b>PART NO.</b>	<b>DESCRIPTION</b>	<b>QTY</b>
86	10063-86	TABLE CRANK HANDLE	1
87	10063-87	LOCK HANDLE	1
88	10063-88	ELEVATING WORM	1
89	10063-89	HELICAL GEAR	1
90	10063-90	POINTER	1
91	10063-91	TABLE	1
92	10063-92	HEX NUT	2
93	10063-93	WASHER	1
94	10063-94	LH ARM STUD	1
95	10063-95	WASHER	1
96	10063-96	RH ARM STUD	1
97	10063-97	BOLT	3
98	10063-98	SPRING WASHER	3
99	10063-99	COLUMN PEDESTAL	1
100	10063-100	BASE	1
101	10063-101	CORD FOR LAMP	1
102	10063-102	GROMMET	1
103	10063-103	CAPACITOR (not shown)	1
104	10063-104	CAPACITOR COVER (not shown)	1
105	10063-105	KEY HOLDER	1
107	10063-107	SCREW	1
109	10063-109	HEADSTOCK CASTING	1
110	10063-110	COLUMN PLATE	1
111	10063-111	RACK SEAT	1
112	10063-112	HEX HEAD BOLT M4	2
113	10063-113	HEX HEAD BOLT M10	2
114	10063-114	STOP BLOCK	2
115	10063-115	CAP SCREW	2
116	10063-116	CHUCK GUARD	1
117	10063-117	GUARD SHAFT	1
118	10063-118	CONNECT BAR	1
119	10063-119	SPRING WASHER	1
120	10063-120	NUT	1
121	10063-121	FIXED SEAT CONNECT BAR	1
122	10063-122	FIXED SEAT	1
123	10063-123	SET SCREW	1
124	10063-124	SWITCH PLATE	1

**PART LIST FOR 10063.001**

<b>NO.</b>	<b>PART NO.</b>	<b>DESCRIPTION</b>	<b>QTY</b>
125	10063-125	SCREW	1
126	10063-126	SET SCREW	2
127	10063-127	NUT	2
128	10063-128	SCREW	2
129	10063-129	RH LIMIT SWITCH	1
130	10063-130	LIMIT SWITCH CORD	1
131	10063-131	LH LIMIT SWITCH	1
132	10063-132	SHAFT CLIP RING	1
133	10063-133	SET SCREW	2
134	10063-134	NUT	2
135	10063-135	SPRING WASHER	2
136	10063-136	LASER TRANSFORMER	1
137	10063-137	LED LIGHT	1
138	10063-138	SCREW	2
139	10063-139	SCREW	3
140	10063-140	LASER COVER	1
141	10063-141	KNOB	1
142	10063-142	LASER BOX	1
143	10063-143	SCREW	4
144	10063-144	LASER SWITCH	1