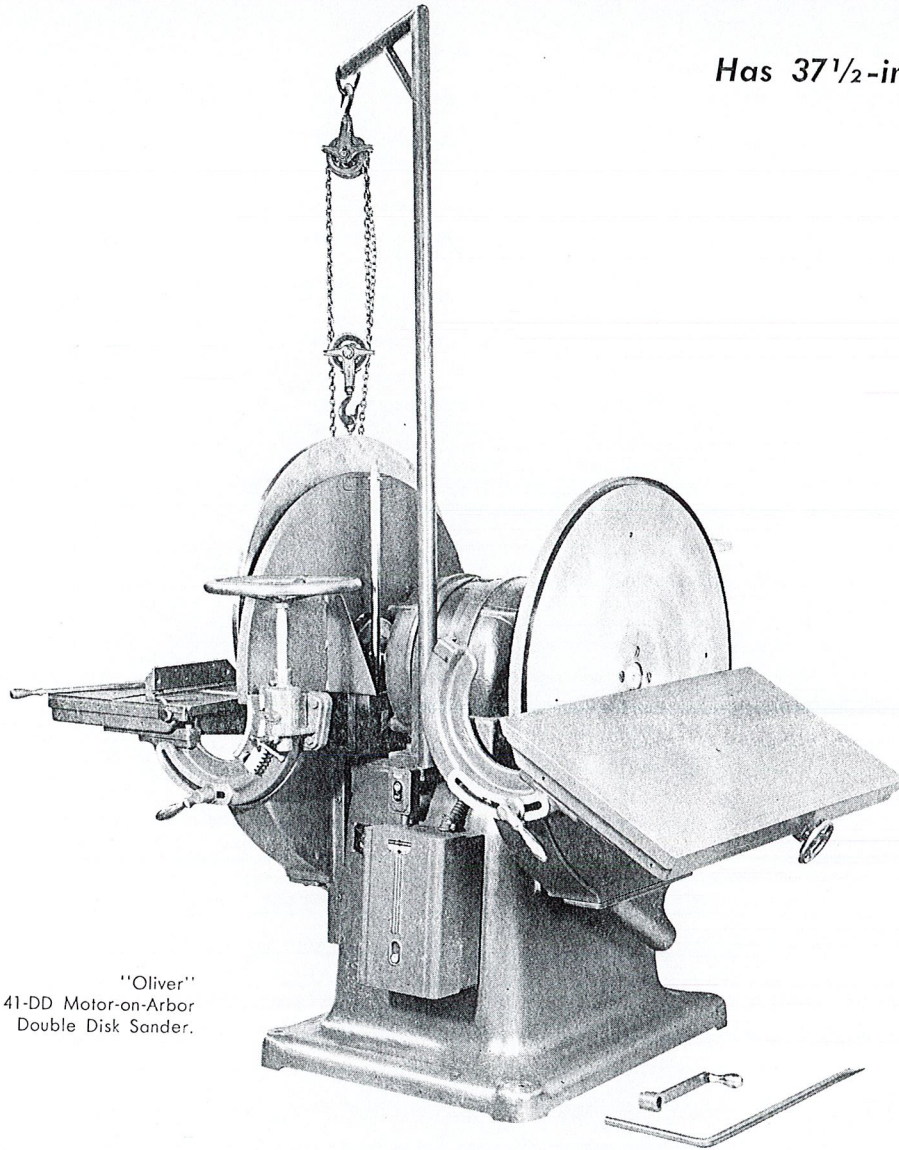




No. 41 DISK SANDERS

Has 37½-inch Disks



"Oliver"
No. 41-DD Motor-on-Arbor
Double Disk Sander.

OLIVER

OLIVER MACHINERY COMPANY, GRAND RAPIDS, MICH. 49504

The Oliver No. 41-DD Sander is offered with two disks 37½ inches diameter, and two adjustable tables (one table is plain). Has 7½ h.p. 900 r.p.m. motor.

No. 41-D Single Disk Sander is also available. It is similar to the Double Disk machine except the plain table and disk are omitted. A 7½ h.p. single shaft motor is used on this machine.

BASE

We build the base in the cored form with a wide flange for rigid floor support. It carries all the working parts, and its solidity eliminates vibration. On the front is a door to provide access to storage space in the base.

DISKS

The disks are 37½ inches diameter, made of steel plate finished all over. They are dynamically balanced and held in place by four large countersunk screws which fasten to a flange mounted on the end of the motor arbor. When it becomes necessary to change the disk it requires but one man.

MOTOR DRIVE

7½ h.p., 900 r.p.m. totally enclosed, dust proof, ball bearing motor. It has a 3-inch shaft extending at both ends to carry the two disks.

ELECTRICAL CONTROL

A magnetic switch with start and stop buttons and a reset button with overload protection controls the motor.

DUST HOODS

A cast iron dust exhaust hood for each disk is located just below the table top with a connecting spout to each hood. The hoods prevent dust from scattering, and keep the work clean.

DISK GUARDS

Guards of heavy welded steel to protect the operator against damage from the rim or rear of disks are furnished regularly with each machine.

TABLES

The tables are 46 inches long and 20 inches wide. They have a lateral adjustment of 4 inches by handwheel and screw, and an angular adjustment of 45 degrees. The table brackets are mounted on rocker arm controlled by handwheel, worm and segment of worm gear, and pivot on large segment ways.

SPECIFICATIONS

BASE — 65 inches long, 39 inches wide, 38 inches high to spindle center.

DISKS — 37½ inches diameter.

TABLES — 46 inches long, 20 inches wide, lateral adjustment 4 inches, tilts to 45 degrees.

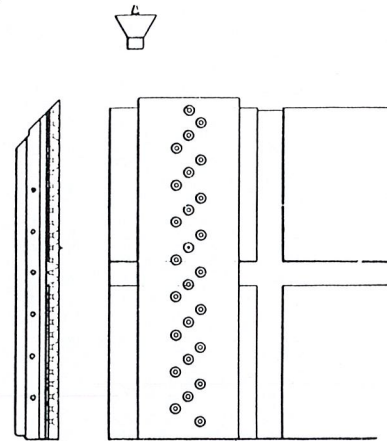
FLOOR SPACE — 42 x 82 inches.

MOTOR — 7½ h.p., 900 r.p.m. Totally enclosed.

(Specifications are subject to change without notice.)

OLIVER SANDO CEMENT

Sando Cement is the result of many years experimentation. This scientifically prepared adhesive securely fastens garnet and aluminum oxide paper sheets or emery cloth to metal disks and rolls of disk and spindle sanders or grinders. Sando Cement is odorless; vermin-proof, non-corrosive and fireproof. It is quick-acting and non-poisonous. Comes in can ready for use — no mixing or preparing is required. Order a gallon can with the Sander.



Illustrating Duplicating attachment for sanding work to uniform widths and lengths.

CIRCULAR SANDING ATTACHMENT

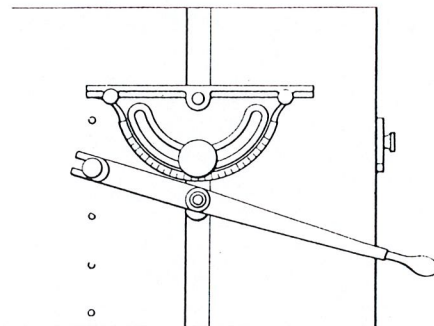
This attachment consists of metal plate with a tongue to fit the slot in the table which permits using the entire surface of the disk in circular sanding. The plate has a series of staggered holes so that any diameter within the capacity of the machine can be sanded either square or to any angle the table will tilt. The steel pivot center can be readily changed from one hole to another, and for fine adjustment, a micrometer screw is provided to adjust the table to and from the sanding disk.

DUPLICATING ATTACHMENT

For sanding several duplicate pieces to the same width we furnish on one table a fence sliding in a groove. It is moved to and from the disk by a lever which strikes an adjustable stop at the side. The fence is graduated to 30 degrees each way and may be swiveled to sand angular work. This mechanism may be removed as desired leaving table clear for large work.

EQUIPMENT

Regular equipment consists of two disks for the double-disk machine, one disk for the single-disk machine, one universal gauge with duplicate sanding attachment, circular sanding attachment, guards to cover rear and top portions of disks, dust hoods below the tables, six No. 1½ garnet abrading sheets, swinging chain block with hook and eyebolt.



Illustrating Circular Sawing attachment for sanding the edges of circular work.

