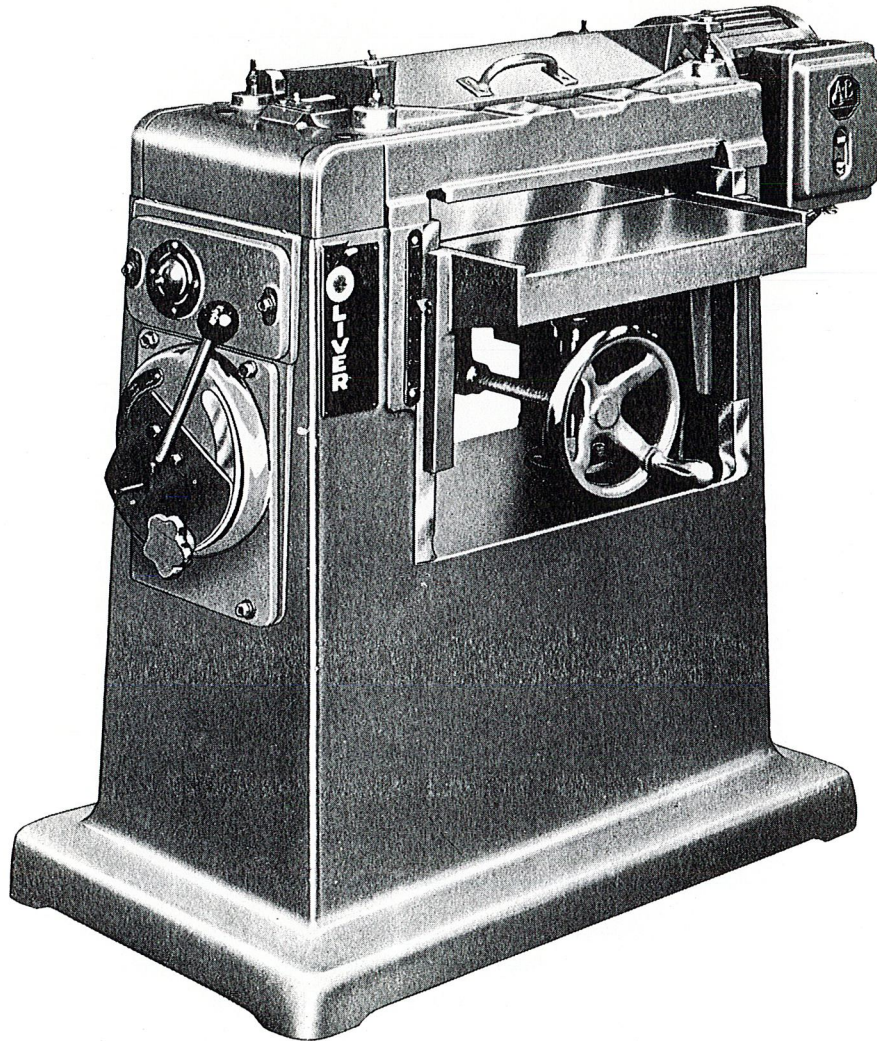




No. 399 - 18
SINGLE SURFACE PLANER



OLIVER

OLIVER MACHINERY COMPANY, GRAND RAPIDS, MICH. 49504

SPECIFICATIONS

Cylinder: $3\frac{1}{2}$ " x $18\frac{3}{8}$ " — 3 knife type.
 Feed Rolls: $2\frac{1}{2}$ ", $8\frac{1}{2}$ " center to center.
 Table: 18" x 24" working surface.
 Drive: 3 h.p., 3600 r.p.m. motor on cylinder.
 Feed: Variable type 20' to 45' per minute.
 Floor Space: 25" x 42".
 Shipping weight: 1225 lbs.

CAPACITY

18" wide by 6" thick — $\frac{1}{16}$ " minimum — shortest piece $8\frac{1}{2}$ " when fed single through the machine.

POWER

5 h.p., 3600 r.p.m. direct mounted, enclosed fan-cooled motor, with Push Button Magnetic Control.

CYLINDER

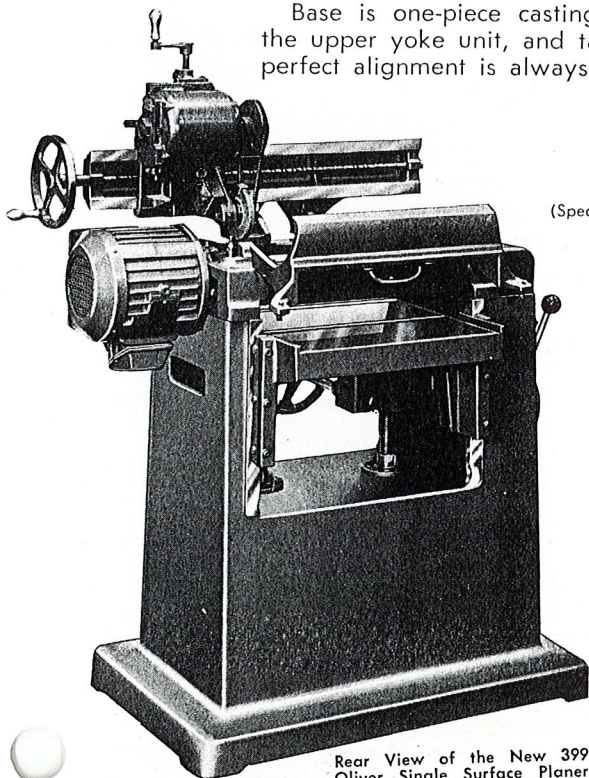
Extra heavy design — 3 knife, $3\frac{1}{2}$ " cutting circle, safety type with high speed knives running in precision ball bearings.

TABLE

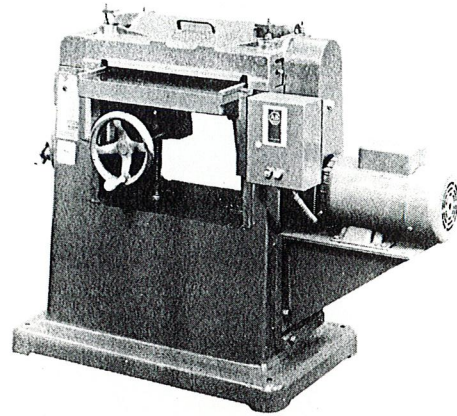
Table has the lower rolls running on frictionless roller bearings — wide vertical bearings with gibs for take-up of wear. It is supported on two large screws which have adjustable nuts to maintain perfect alignment with the cylinder. Working surface 18" x 24" — table rolls accessible for adjustment.

COLUMN

Base is one-piece casting supporting the upper yoke unit, and table unit, so perfect alignment is always assured.



Rear View of the New 399 Oliver Single Surface Planer with Motor Knife Grinding Attachment in use.



No. 399-V — 18" Surface Planer with V-Belt drive to the cylinder. Machine can be used for single phase applications as well as higher cylinder speeds up to 5,000 r.p.m. on 60 cycles.

FEED

Upper rolls power driven, front roll with corrugations, rear roll smooth; will give any desired feed from 20 feet to 45 feet per minute, controlled by lever at left side of machine, convenient to operator.

CHIPBREAKER

One-piece solid type, swings free from cylinder, is controlled in operation with front pressure roll and simply adjusted.

PRESSURE BAR

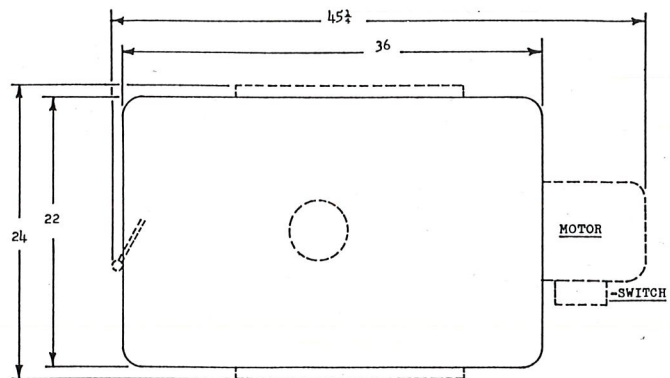
Solid semi-steel casting — located close to cylinder for perfect planing; fine and accurate adjustments provided.

KNIFE GRINDER

As an extra, a motor driven knife grinder unit can be supplied — self contained with V-belt drive to emery wheel. The cylinder is arranged for indexing perfectly and the grinder will prove a fine accessory for the Planer.

(Specifications are subject to change without notice.)

FLOOR PLAN



Infeed Table
 Solid Lines — Indicate Floor Contact Area
 Dotted Lines — Show Projected Area
 All Dimensions are Approximate
 Shipping weight 1300 lbs.

OLIVER MACHINERY COMPANY, GRAND RAPIDS, MICH. 49504