



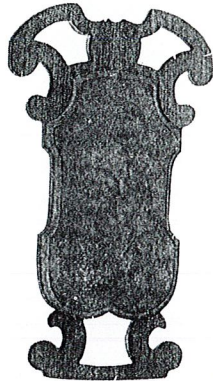
"Every User  
Is a Booster"

# "Oliver" No. 190 Universal Scroll Edge Sander

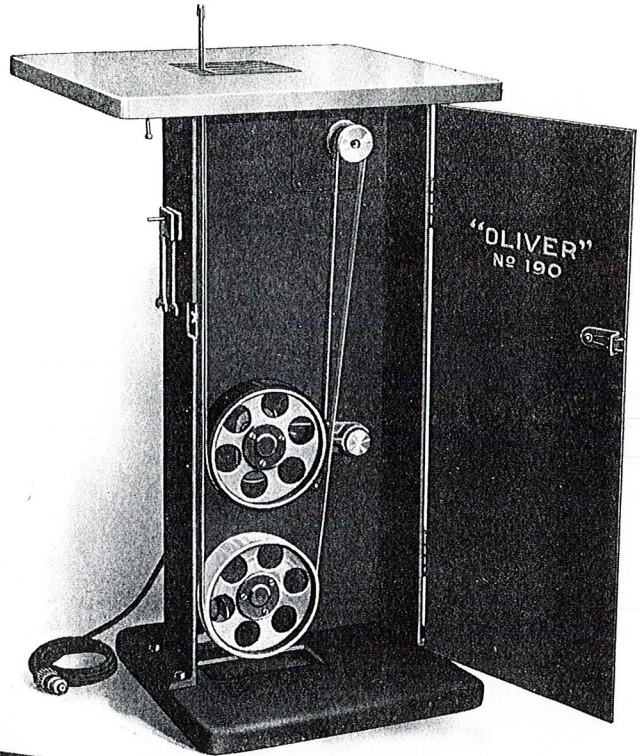
Motor Driven — Self Contained — Very Easy to Operate  
Cuts Sanding Costs — Saves Money



Chair banisters as above can have all edges sanded at a fraction of the former cost.

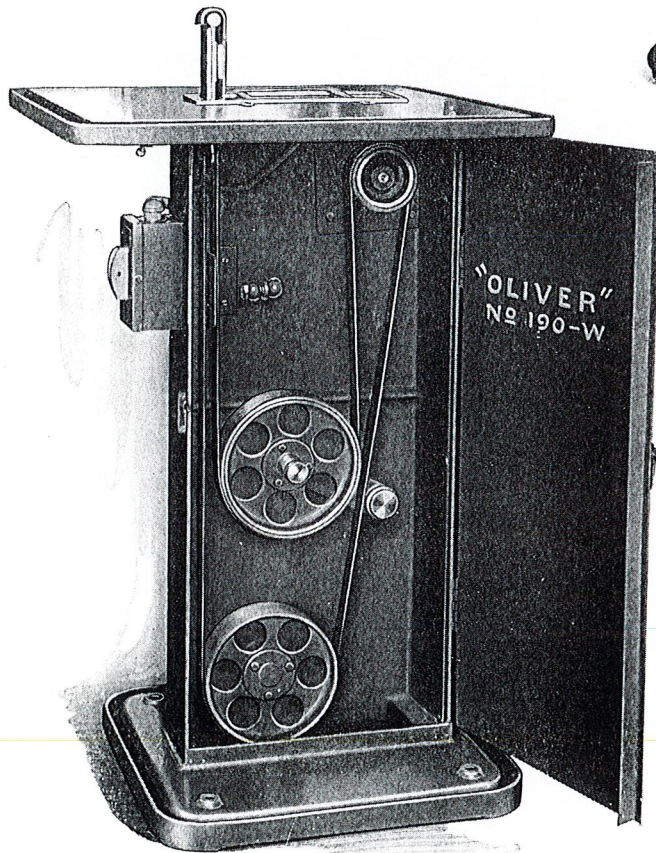


This chair back shows the type of both inside and outside edges, which can be sanded on the "Oliver" No. 190 at a big saving.



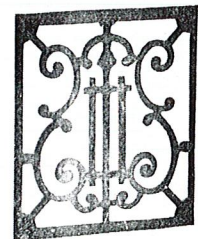
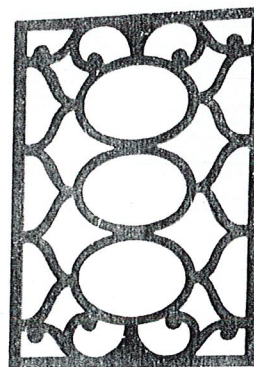
No. 190-D

View Showing the Extreme Simplicity of the Design and Compactness of the Machine. Open the Door to Get at Any Part. Close the Door and All Pulleys are Effectively Guarded.



No. 190-W

Wet Grinder and Polisher with whirling jet water spray on belt. Table and base have a deep water trough. Picture shows a plastic frame being polished on inside edge.



Grill work such as this can have all inside edges sanded on the "Oliver" No. 190 at about one-tenth of former cost.

Manufactured by  
**Oliver Machinery Company**  
Grand Rapids, Mich., U.S.A.

BRANCH SALES OFFICES:  
New York, Atlanta, Pittsburgh, Cleveland, Detroit, Chicago,  
Indianapolis, St. Louis, Minneapolis, Denver, Salt Lake City,  
Seattle, Portland, San Francisco, Los Angeles.

### Purpose

This machine will efficiently sand all kinds of scroll edges, especially those produced by jig saw work. Heretofore it has been necessary to file these edges with small files, and sand them by hand in a laborious costly manner. On this machine one man can easily accomplish the work of three or four men at a decided saving and with the assurance of doing better, smoother and more accurate sanding.

### Table

Is cast iron 24 inches square, finished and polished at the top, stands about 38 inches from the floor, with wooden throat piece in the center to facilitate use of various forms.

### Column

The column is one piece cored casting with a swinging steel door on one side that entirely encloses and guards all pulleys and the sand belt. A floor plate at the bottom of the column makes the machine entirely self-contained and easily portable to any desired location. A round hole provides easy connection to exhaust hood, when so desired.

### Motor

The electric motor is totally enclosed, ball bearing, 1/2 H.P.,

1800 R.P.M., single phase, 110 or 220 volt, 60 or 50 cycle (or 115 or 230 volt D.C.) with Safety First Enclosed Tumbler Switch and ten feet of cord with plug for light socket attachment. (2 or 3 phase A.C. motor is furnished with switch, but without cord and plug.) Motor is fitted with a special flanged pulley which has the desired traction on the sand belts regardless of texture and width.

### Idler Pulleys

The idler pulleys which direct the path of the sand belt are of aluminum, 8-inch diameter, 2-inch face, finished for balance and fitted with anti-friction ball bearings, lubricated by automatic oiling cups. The top pulley is of the swinging type idler with rubber facing to make it suitable for running with the sand part next to the pulley.

### Sand Belts

Sand belts of any width up to 1 1/2-inch wide can be used. Ordinarily belts 1/2-inch wide are used for jig or scroll work with intricate curves. The sand belts should be 12 feet 1 inch long, carefully spliced, endless, and preferably of the linen back flexible type of finer grits. Sand belts travel over the forms approximately 900 lineal feet per minute.

### Forms

There are three sizes of forms furnished with this machine to take sand belts 1/2, 3/4 and 1 1/2 inch wide, all of which are very easily located in place and fastened rigidly. The sand belt runs over the form and sands inside scroll work very effectively and quickly, creating a large saving in the cost of sanding scroll edge work. Of course it is expected that the operator will make his own forms to suit the particular types of work he has, the forms being made either of metal or of wood. Many hardwood forms covered with graphited canvas are just as good as metal forms.

### Wet Polishing, No. 190-W

Machine can be furnished with special table, and base each having water trough around outside edge. Spray unit for using a jet spray of water on the belt. This is an ideal machine for cleaning or polishing plastic or non-ferrous castings. Furnished with 1 1/2-inch wide belt and hard-chrome plated guide form to suit. See picture on cover.

### Equipment

Self-contained electric motor and switch; three assorted sizes of metal forms with clamping arrangement, and three sand belts, made endless, 12 feet 1 inch long.

#### CODE, WEIGHT, ETC.

CODE	MACHINE DESCRIPTION	WEIGHT IN POUNDS		CUBIC FEET
		CRATED	BOXED	
Eupad	No. 190-D Universal Scroll Edge Sander .....	400	550	24
Eudid	No. 190-W Wet Grinder and Polisher .....	450	600	26