



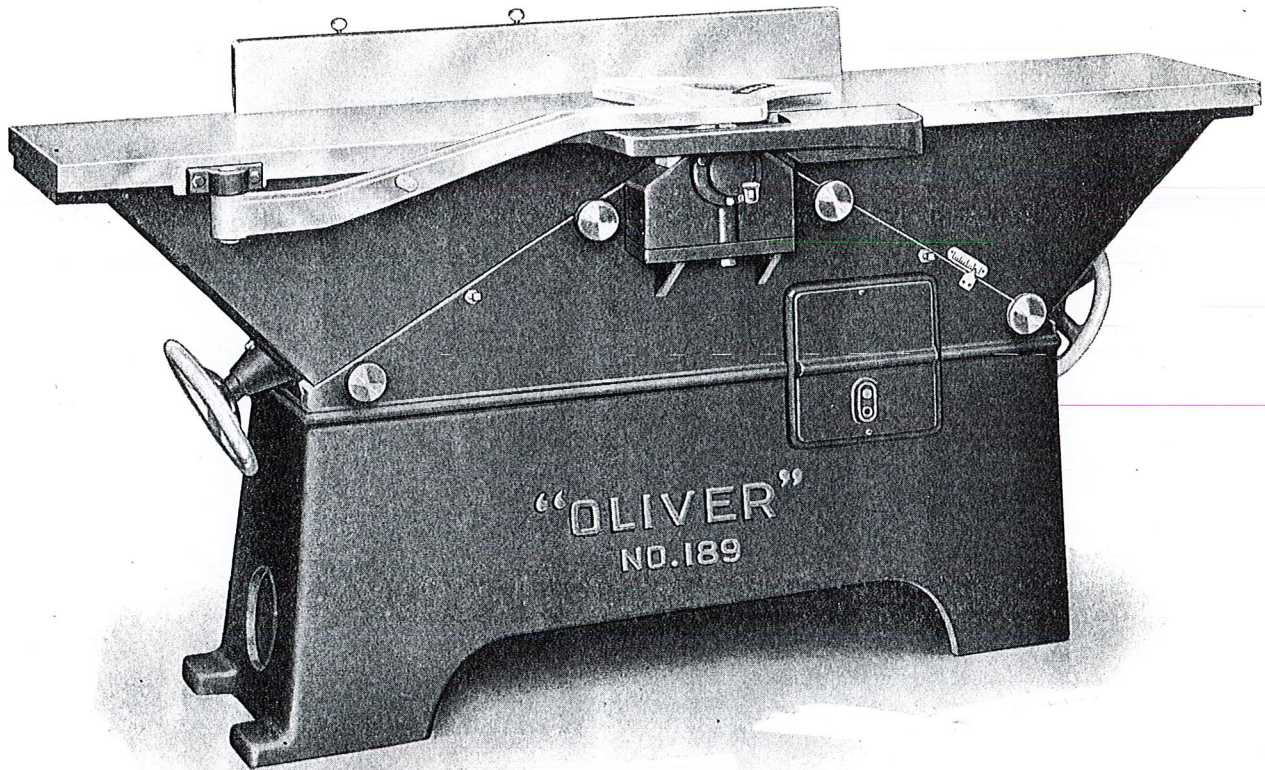
*"Every User
Is a Booster"*

"Oliver" No. 189

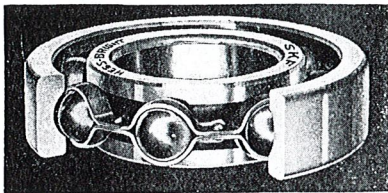
Ball Bearing

Hand Planer and Jointer

"The Safest and Most Efficient Jointers on the Market"
Extra Long Tables — Total Length 7 feet long



No. 189 "OLIVER" Hand Planer and Jointer — Complete Ready for Use.
Front view of machine in normal operating condition. Note the extra length of bed.



Ball Bearings of the highest grade are furnished for Cylinder Bearings of all "Oliver" Jointers.

Manufactured by

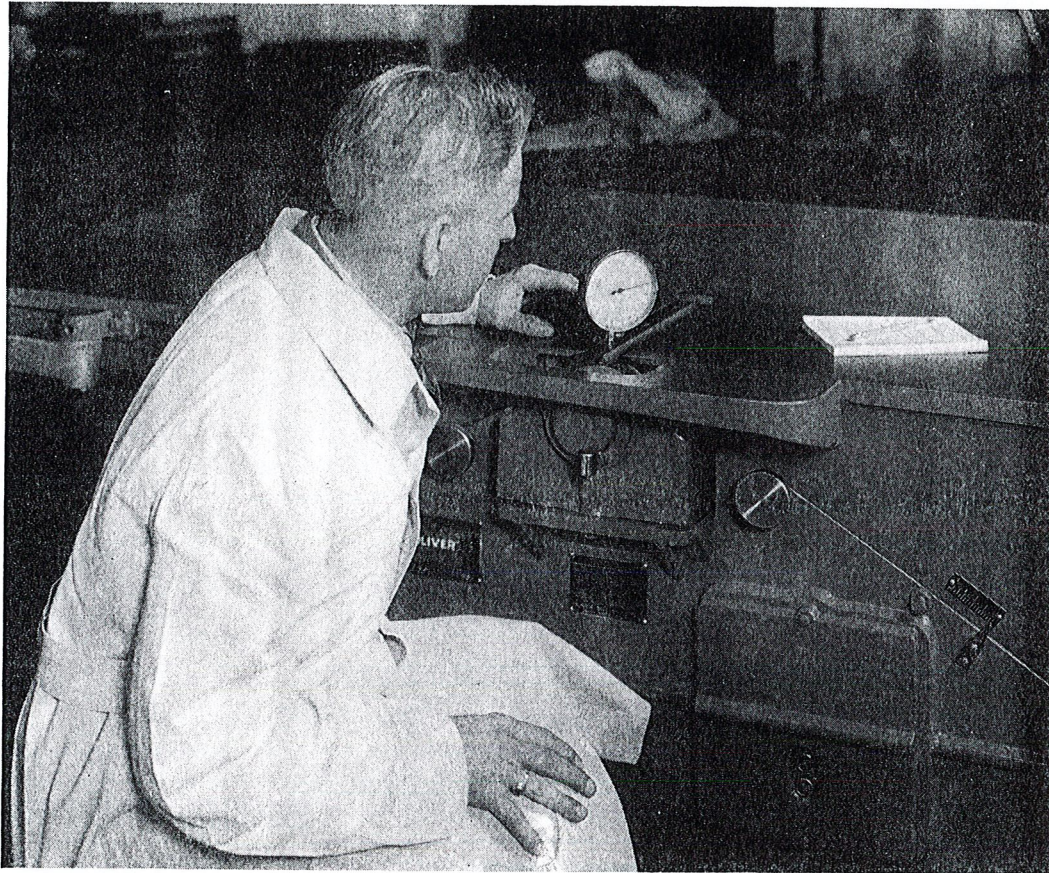
Oliver Machinery Co.

Grand Rapids, Mich., U.S.A.

BRANCH SALES OFFICES:

New York, St. Louis, Minneapolis, Los Angeles, San Francisco,
Chicago, Denver, Salt Lake City, Seattle, Manchester, Eng.

A ONE-EIGHTY-NINE COMES THROUGH!



The No. 189 Hand Jointer

A fine, versatile production machine entirely suited to practically any situation. It is built in one size — 12-inch. (Other "OLIVER" jointers are available from 6 inches to 30 inches in width). Handles a surprisingly wide range of work such as squaring, smoothing,

jointing, truing up, beveling, chamfering, rabbeting, tonguing, grooving, beading, cornering, gaining and tenoning.

John Page, who "puts them together" at "OLIVER'S," says:

"When a machine comes through the 'Oliver' plant accuracy begins at the base. The gauge must show no more

than a thousandth of an inch variation anywhere. Cylinder unit, tables and ways must be trued with the base. When the Inspector checks my work nothing 'good enough' gets by. A fit is a fit — or it's not a fit. All machines coming through the 'Oliver' shops must check up to the close tolerance established by that firm."

CODE	MACHINE DESCRIPTION	WEIGHT IN POUNDS		CUBIC FEET
		CRATED	BOXED	
Dodaf	No. 189-BD — 12-inch Hand Planer and Jointer with 3 h.p. Motor-on-Arbor and built-in Push Button Starter.....	1600	1800	54
EXTRAS				
Docil	Countershaft for No. 189-B, Ball Bearing.....	100	100	4
Docio	Mechanical Brake, add if desired.....			
Docir	Motor Bracket, Belt and Belt Guard for self-contained Belted Motor Drive (not including Motor or Switch).....	75	75	4
Docin	Flexible Coupling and Motor Bracket for Coupled Motor Drive (not including Motor or Switch).....	50	50	2
Dodap	Exhaust Connection, to fasten directly below Cutter Head for 5-inch Pipe Connection			
DEDUCTIONS				
Docl	For Plain Belt Drive Machine — no countershaft — either size.			