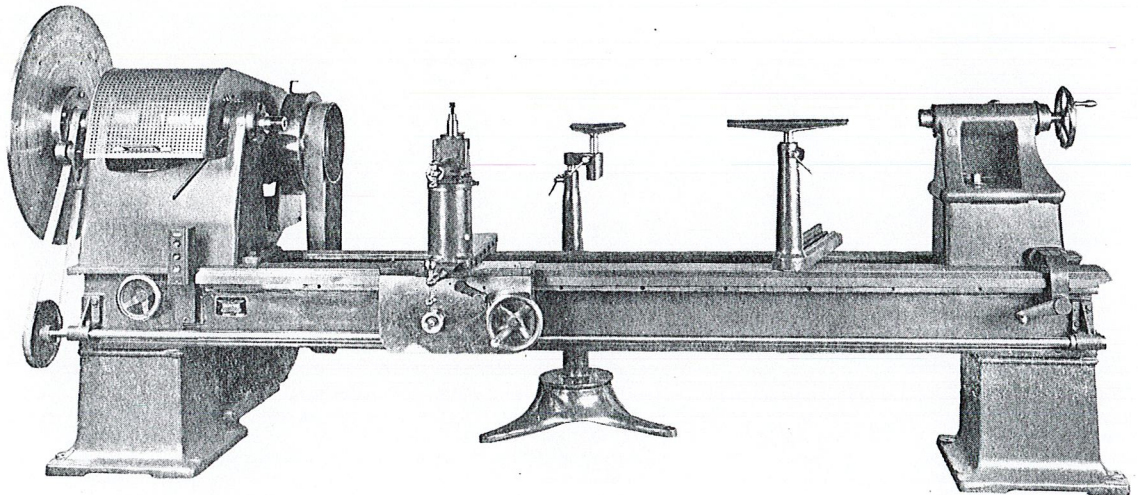




No. 18 WOOD TURNING LATHE



NOTE: Some guards have been removed to show machine features.



No. 18 WOOD TURNING LATHE

CAPACITY 18-BC

Swing 36" diameter over bed (914mm).
Swing 31" diameter over carriage (787mm).
Turns 8'1" between centers (2464mm).

CAPACITY 18-CC

Swing 42" diameter over bed (1067mm).
Swing 38" diameter over carriage (965mm).
Turns 8'1" between centers (2464mm).

HEADSTOCK

Heavy cast iron carrying spindle, 4-step pulley, countershaft and pulley. Equipped with Timken bearings. Motor and control attached to base at headstock end.

Spindle threads: 2 $\frac{1}{4}$ " - 5 RH NC.

Spindle speeds: 1492, 908, 746, 551, 534, 454, 341, 325, 281, 267, 200, 170, 162, 122, 100, 61 rpm.

TAILSTOCK

Heavy cast iron construction.
Diameter of spindle 3" (76mm).
Traverse of spindle 8" (203mm).
Size of Morse taper 4.

CARRIAGE 18-BC

Power feed type.
Traverse of crossfeed 17" (432mm).
Traverse of crossfeed on compound 9" (229mm).
Travel of carriage on bed 8'6" (2591mm).

CARRIAGE 18-CC

Power feed type.
Traverse of crossfeed 20" (508mm).
Traverse of crossfeed on compound 9" (229mm).
Travel of carriage on bed 8'6" (2591mm).

MOTOR AND CONTROL

10/5 HP. 3 phase, 60 hertz, 230 or 460 volt, 2 speed
600/1200 RPM, single winding constant torque,
TEFC, push button magnetic control Allen Bradley
715 or equivalent.

EQUIPMENT

Spur centers 1 $\frac{1}{4}$ " and 2" diameter #4 Morse taper
(44 and 51mm).
Cup center $\frac{3}{4}$ " diameter #4 Morse taper (19mm).
Conical center 1 $\frac{1}{4}$ " diameter #4 Morse taper (44mm).
Faceplates 1 each 12", 24", 30", 38" diameter
(305, 609, 762, 965mm).
Hand tool rest socket for carriage.
Hand tool rests 1 each 6", 12", 18", 48" long
(152, 305, 457, 1219mm).
Right angle rest 6" (152mm).
2 — Tool rest assemblies for bed.
Floor stand.
Electric brake.

CRATED WEIGHT

18-BC 5,600#
18-CC 6,000#

ALL SPECIFICATIONS ARE SUBJECT TO CHANGE WITHOUT NOTICE.

OLIVER MACHINERY COMPANY, GRAND RAPIDS, MICH. 49504
TELEPHONE NO. 616-456-1591

TELEX NO. 22-6483