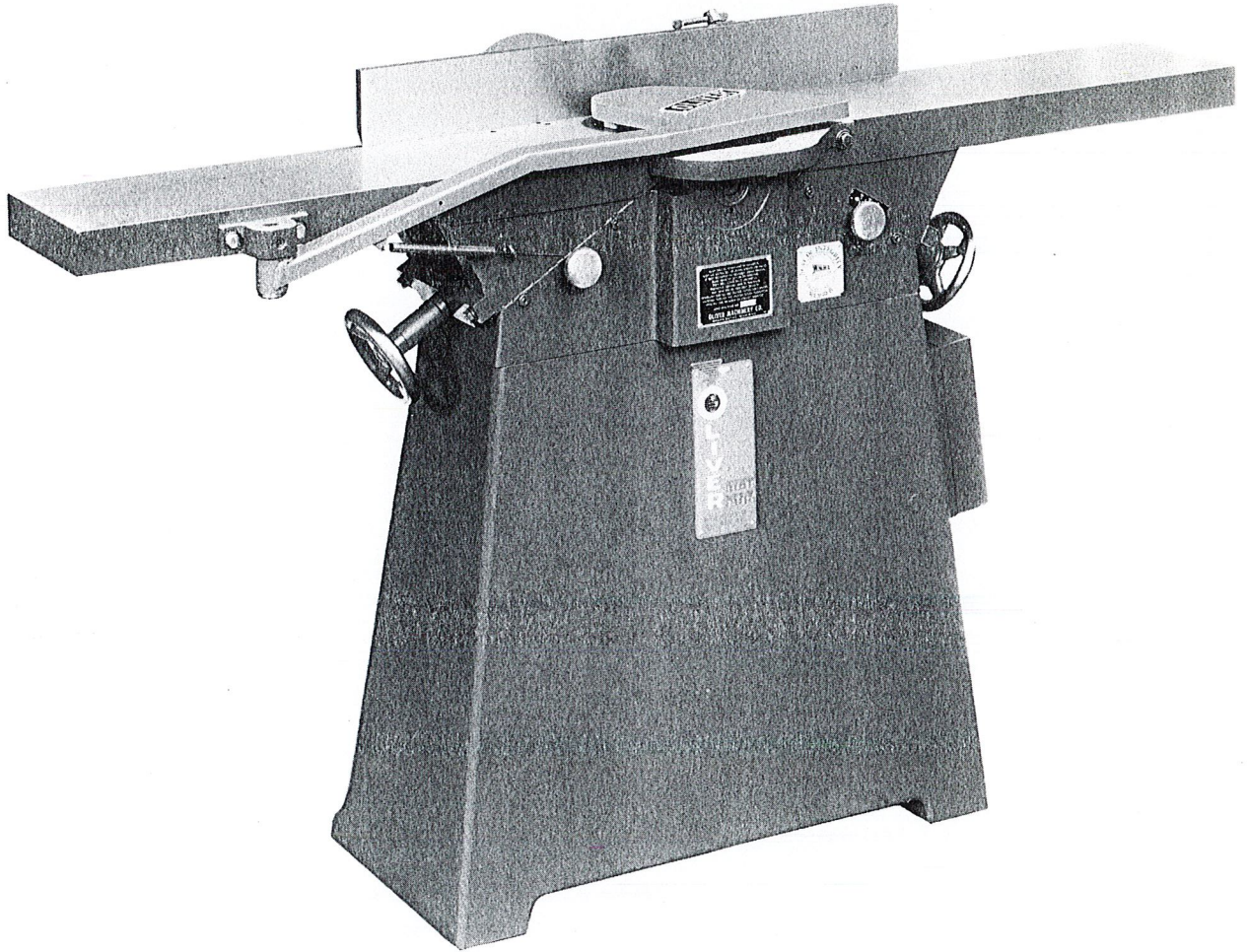


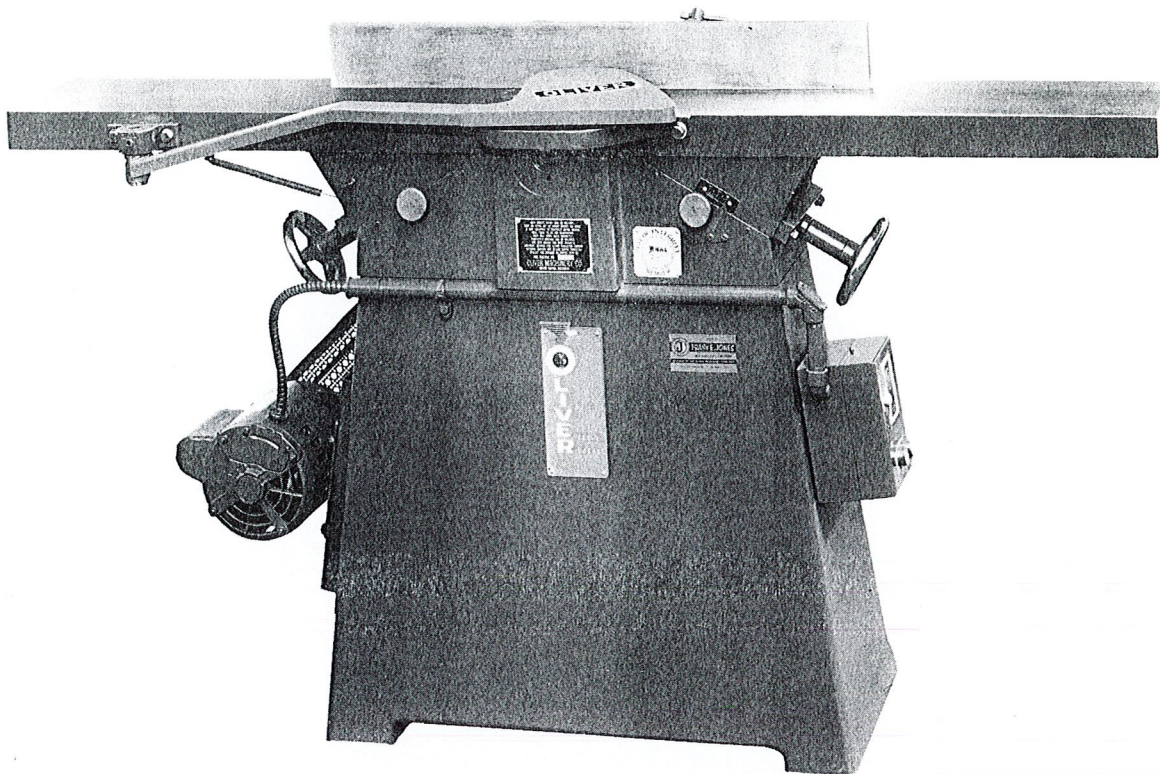


No. 144 8" JOINTER



OLIVER

OLIVER MACHINERY COMPANY, GRAND RAPIDS, MICH. 49504



Veebelt drive for single phase or other cutterhead speeds.

BED

This is a heavy ribbed cored casting with ball bearing housings, and 30-degree accurately machined dovetail inclined ways which support the tables. Design of bed provides efficient shavings exhaust.

TABLES

These are made of cast iron, with removable steel lip at the cutting throat. Total length of tables set for average work is 60 inches over-all. Tables are 8½ inches wide and 30 inches long. Both tables have dovetailed inclined ways, hand scraped for perfect bearing and ease of movement. Each table is independently adjustable toward and away from the cylinder by means of hand wheel and screw, and for rabbeting up to ½-inch deep, with a locking screw for

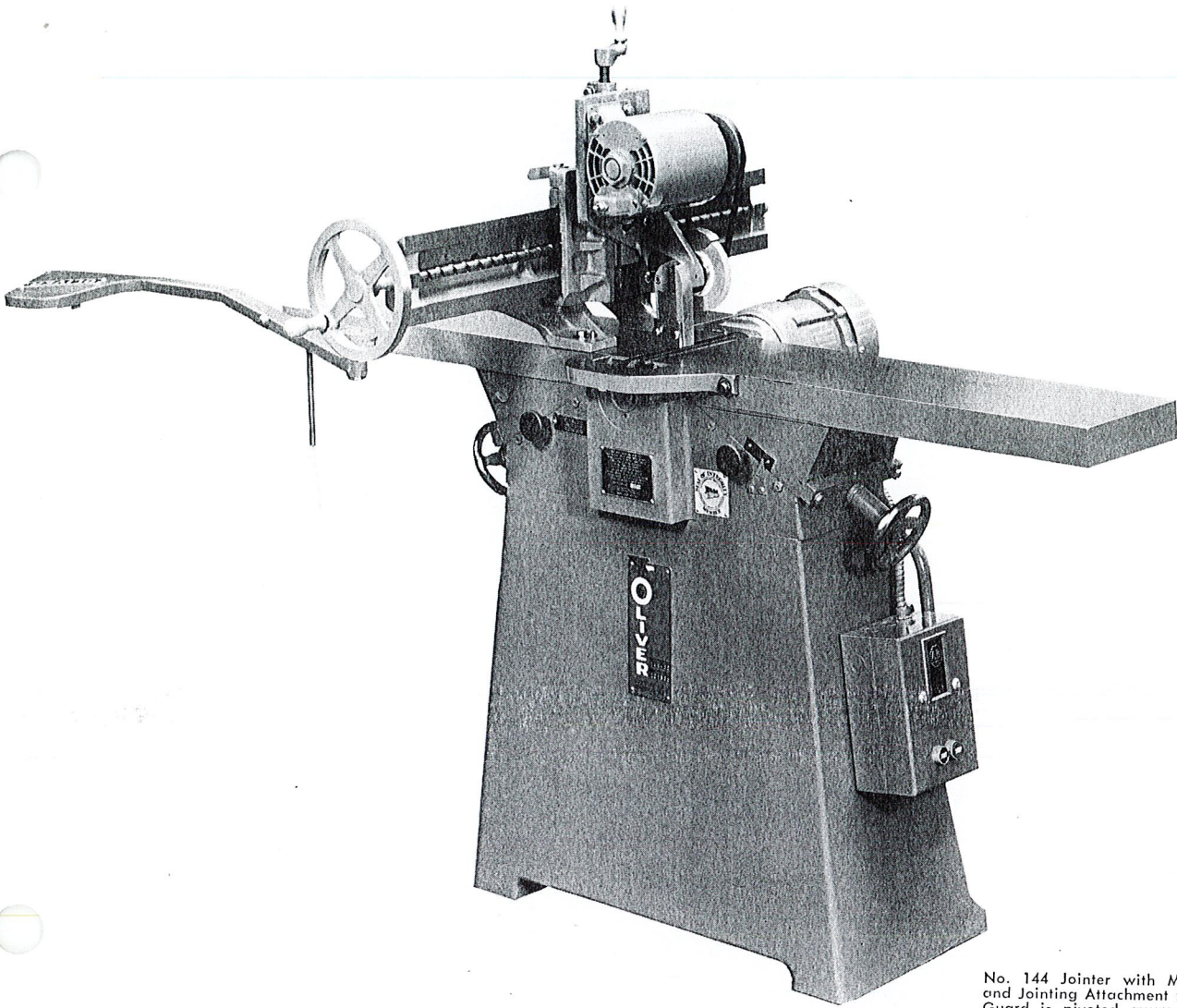
each table located at front of machine. Concentric shape of lips with cylinder permits drawing of tables to minimum opening of cylinder throat, insuring higher quality of work and capacity for handling shorter stock. Height from floor, 33 inches. Rear table drilled for Knife Grinding Attachment.

CYLINDER

Circular inserted knife type. Equipped with three Tungsten-Chromium steel knives. Cutting diameter 3½ inches, speed 3600 r.p.m. Operates in high grade permanently lubricated ball bearings.

KNIFE GUARDS

Machine is regularly equipped with the Oliver Automatic



No. 144 Jointer with Motor Knife Grinding and Jointing Attachment mounted on machine. Guard is pivoted away from cutterhead for grinding operation. Guard for grinder belt and pulley is removed to show detail.

Knife Guard. Guard always covers that part of knives not actually cutting, and is never a hindrance to operator. Metal Guard back of fence covers cylinder when fence is in forward position.

FENCE

This is 30 inches long, 3½ inches high. Can be tilted and locked at any angle from 90 to 45 degrees. Moves anywhere across the tables and fastened to bracket attached to rear table out of operator's way.

RABBETING ATTACHMENT

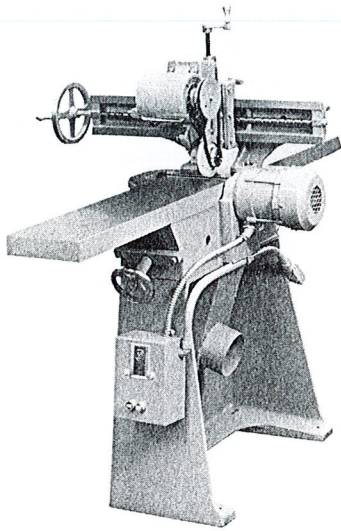
This device is furnished with each machine. It may easily be removed at any time. It presents a wide supporting surface for stock being rabbeted.

MOTOR DRIVES

Two types of motor drive can be furnished, as follows:

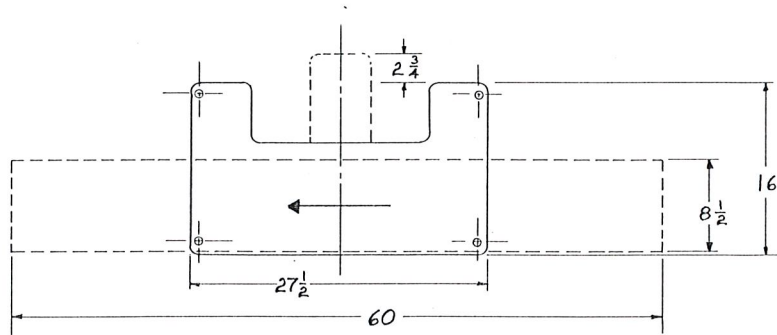
DIRECT MOTOR-ON-CYLINDER SHAFT DRIVE. Furnished only for 3 phase, 60 cycle, 230 or 460 volts, alternating current. A 3600 r.p.m. "shaftless" motor is mounted directly on the extended shaft of cylinder head of machine, including push button control with overload protection mounted on machine.

V-BELT MOTOR DRIVE furnished for any current specifications. Motor mounted on bracket bolted to machine column, having adjustment for taking up belts. Motor belted directly to cylinder pulley, belt guard furnished.



This view shows the Knife Grinding Attachment and the 5" exhaust connection. Both accessories available as optional extras. Guard for Grinder Belt and Pulley is removed to show detail.

SOLID LINE - FLOOR CONTACT AREA
 DOTTED LINE - TABLE & MOTOR OUTLINE
 DIMENSIONS ARE APPROXIMATE



MOTOR DRIVEN KNIFE GRINDER

A No. 144 knife grinding and jointing attachment is available for grinding the knives right in the cylinder. If ordered with a No. 144 Jointer, the grinding unit is installed on the machine without charge.

STANDARD EQUIPMENT

- 1 H.P., 3600 RPM, TEFC Motor
- Rabbeting Arm
- Tilting Fence Assembly
- Automatic Cylinder Guard
- Magnetic Control
- Exhaust connection 5" outlet

OPTIONAL EQUIPMENT

- No. 144-KG motor knife grinding and jointing attachment
- 2 H.P. motor
- Electric Disk Brake

SPECIFICATIONS

Length of tables 60" (152.4 cm)	1 H.P., 3600 RPM, TEFC motor
Width of tables 8 1/2" (21.59 cm)	Magnetic control
Table height 33" (83.82 cm)	Floor space 60" x 19" (152.4 x 48.26 cm)
Rabbeting capacity 1/2" (1.27 cm)	Shipping weight 650 lbs. (295 kg)

(All specifications are subject to change without notice.)

OLIVER MACHINERY COMPANY, GRAND RAPIDS, MICH. 49504
 TELEPHONE NO. 616-456-1591 TELEX NO. 22-6483